



Soak up the Rain!

NEWEA's First Service Project at Common Fence Point, Portsmouth RI

Sara Churgin (ERICD), Ben Stoddard, Kate Roosa, and Marc Weller

Agenda

- NEWEA YP Involvement
- ERICD and Community Stakeholders
 - Why Green Infrastructure?
- Common Fence Point
 - Planning and Design
- Lessons Learned
- Future Work



NEWEA Young Professionals

- 2016 NEWEA Planning Session “Parking Lot” Stretch Goal
- Integrate with NEWEA Spring Meeting
- Partner with Local Communities



National Role Model – WEF Service Project

- Annual Event at WEFTEC
- Developed SOP & Materials Lists
- Project Selection Criteria
- Adapted at the local level



Eastern Rhode Island Conservation District



- Created in 1945
- Quasi-Public, Non-Profit Organization
- Work with landowners, municipal leaders, state and federal natural resource agencies
- Actions focus on stormwater runoff and green infrastructure



RHODE ISLAND
GREEN INFRASTRUCTURE
COALITION

Rhode Island Green Infrastructure Coalition



Nature-based solutions for cleaning runoff pollution



Creating projects with long-term sustainable funding



Leveraging policy in state and municipal governments.



Educating others about stormwater transport in urban and suburban environments

Why Green Infrastructure?



Stormwater Management

- Polluted load dumped into a river or pond.
- Stormwater runoff increases the downstream flow from roof drains onto driveways or gallons of water into sewers from paved parking lots.
- Water becomes unsafe for human use or for the aquatic ecosystem.



Climate Resilience

Cool Cities

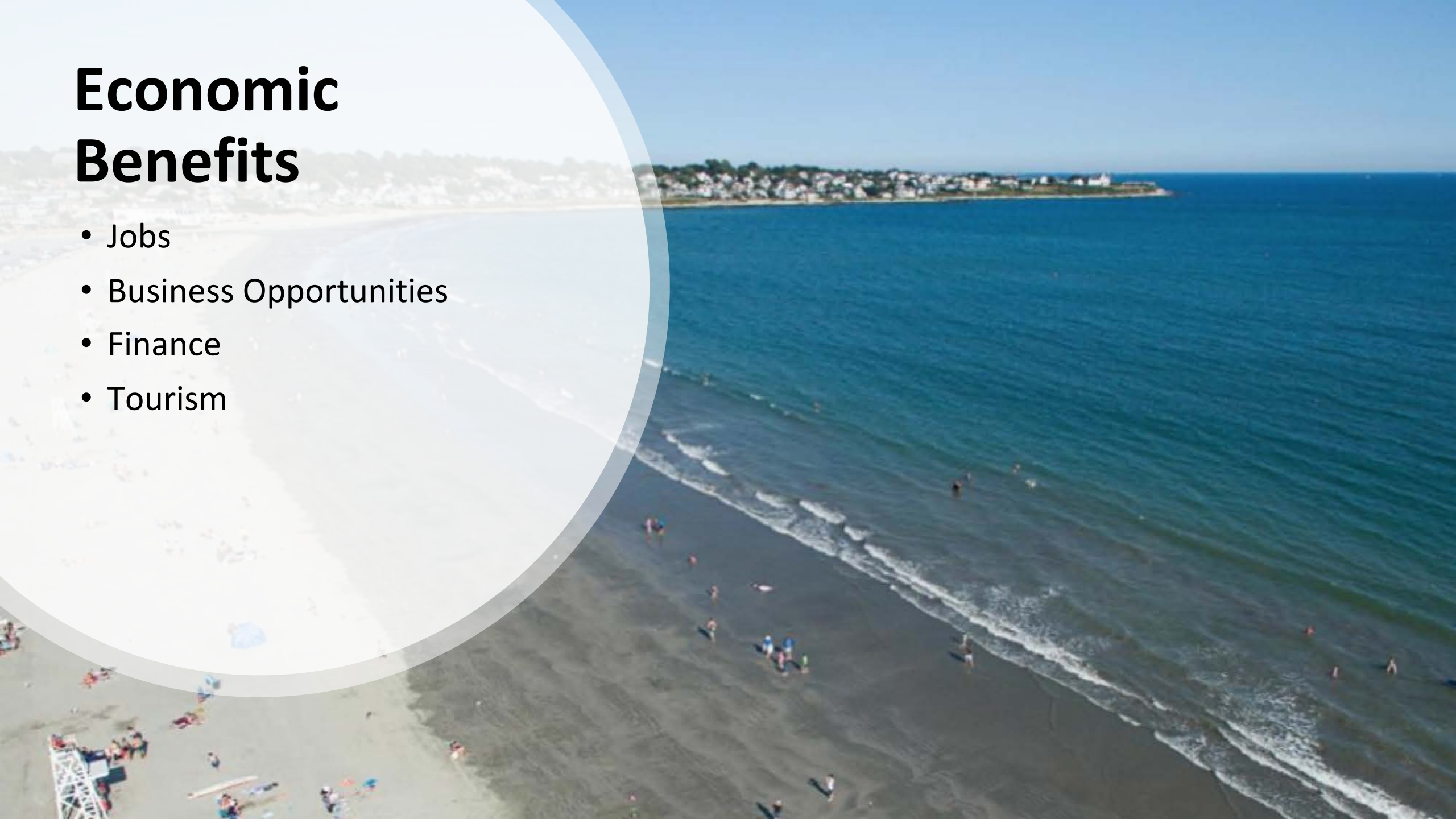


Coastlines on the Edge



Economic Benefits

- Jobs
- Business Opportunities
- Finance
- Tourism





Focus Areas

- **Providence-Metro**
- **Newport-Aquidneck Island**



Providence Installations

Mt. Hope High School





Nature is at work here!

www.greeninfrastructureri.org



Clean

Uses plants and soils to filter out pollution.



Protect

Absorbs rain and reduces flooding.



Cool

Replaces hard surfaces that hold heat.



Economy

Reduces utility bills and creates local jobs and training opportunities.



Wellness

Cleans our air and creates welcoming spaces.



Habitat

Attracts animals like butterflies, turtles and frogs.

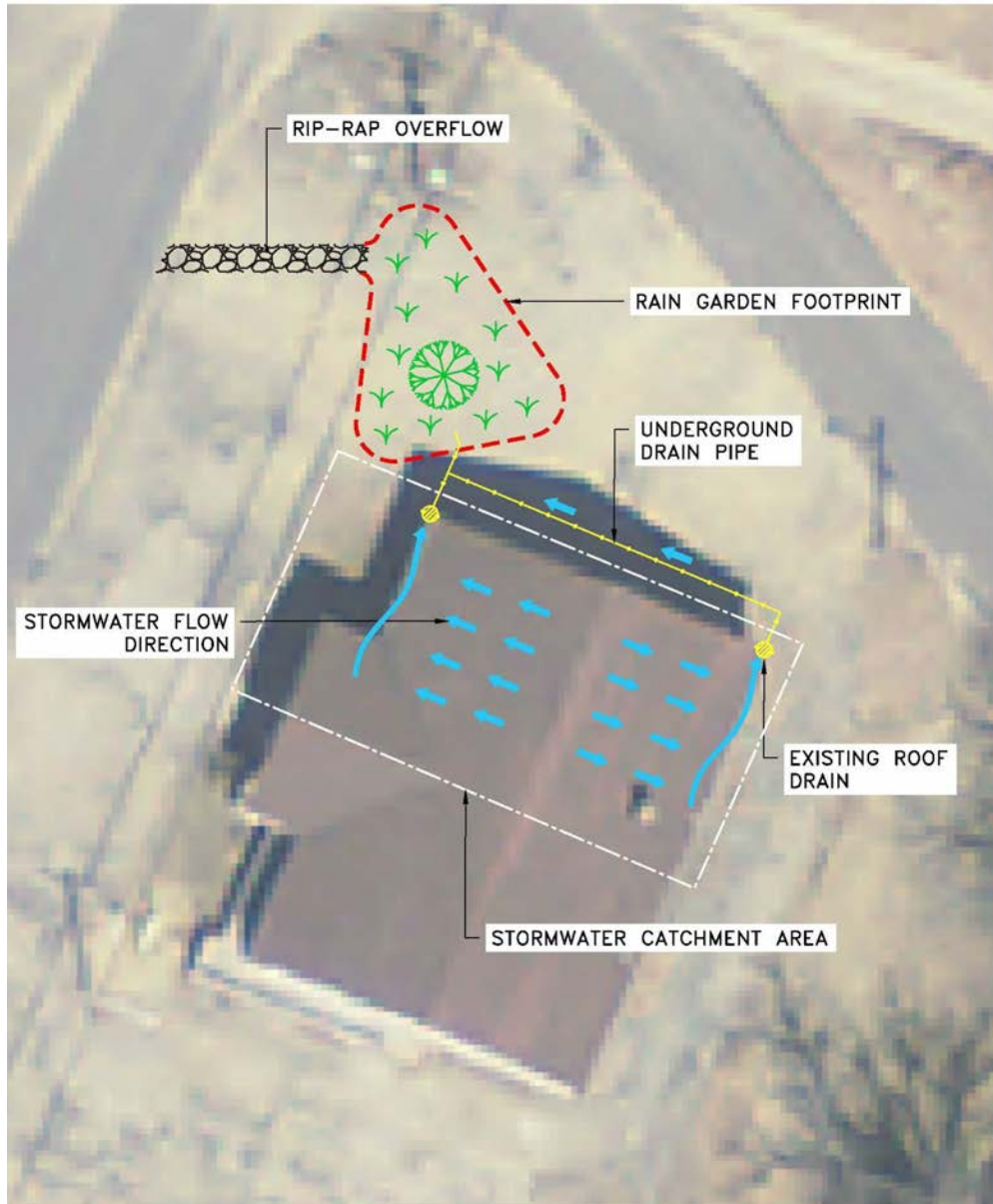


Mt. Hope High School Rain Garden

"In 2018, students at Mt. Hope High School built this rain garden as a legacy to their school. The roots of these native plants naturally filter pollutants from rainwater runoff. While adding beauty to the school and providing food for pollinators, this garden is a small step in helping to clean and reduce flooding in Silver Creek".



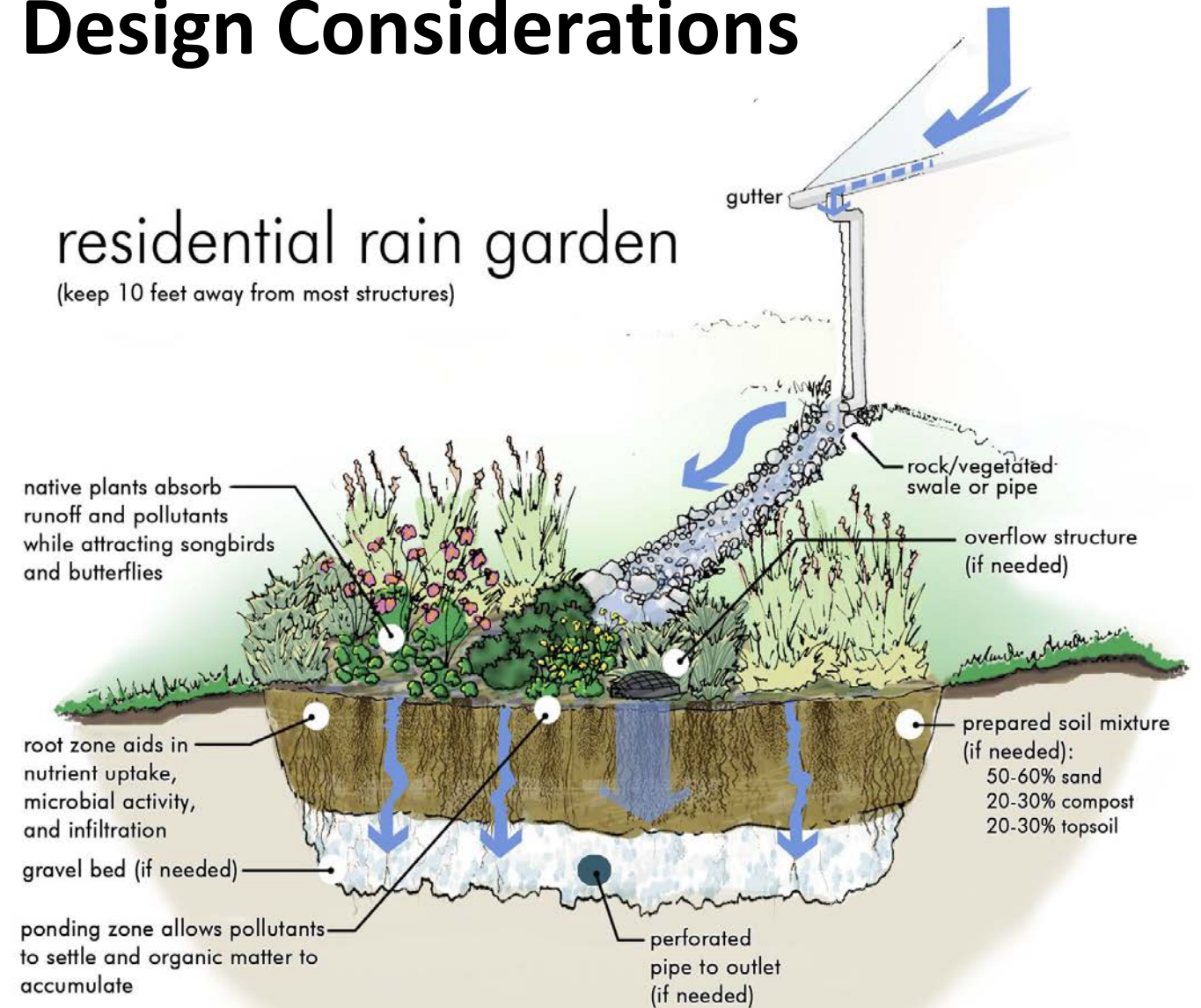
Common
Fence Point



Design Considerations

residential rain garden

(keep 10 feet away from most structures)



Recommended Maintenance for
Common Fence Point Music Center Rain Garden

General Maintenance Care

- Watering: For the first three weeks after planting, water the rain garden once per week. It is not necessary to water during a given week if one-inch of rain accumulates. Water the garden during drought periods in mid-summer, if needed.
- Weeding: Removed identified weeds. Below is a photo list of what is in the rain garden.
- Mulch: Until the rain garden plants are established, mulching the edge / slope of the rain garden interior to discourage weed growth and soil erosion.
- Sedimentation: It is always best to protect the garden from the possibility of silt entering the garden. If a rain garden does have sediment build up, an easy remedy is to dig small pits in the garden and remove the soil. Over time these will naturally fill in and the plants grow over. This is less invasive than trying to skim off larger areas and disturbs the plant community less. In severe cases it may be necessary to re dig the basin.

What is in your rain garden: native plants and pollinators



Maintenance Plan

- General Maintenance
- Monthly
- Annual



Ta-da!



Lessons Learned

- Prepared site helped save time
- Work with community connectors
- Safety First
- Engage with community members and volunteers of all ages



Acknowledgements

- CFP Community
 - Conley Zani
 - Dan Woods
 - Dave Kamara
 - Kevin Rocha
 - Barbara Jones
- Janine Burke-Wells
- Narragansett Engineering





RHODE ISLAND
GREEN INFRASTRUCTURE
COALITION



WOODS SEPTIC
401.835.5501

Sponsors



Ongoing Work

- ERICD at Melville Elementary School
- NEWEA Call for Project Sponsors in New Hampshire!



