



Rhode Island Energy™
a PPL company

Managing your energy usage and electric demand

Mike Cunningham – RI Energy; Ron Gillooly, CEM - Leidos

For Review Today



Rhode Island Energy™
a PPL company

- **Energy Efficiency Program Tracks**
- **Incentives – Redesigned Energy Management Program**
- **Rates/Demand Charges**
 - G2 & G3 (Most customers in this room)
 - ICAP “The hidden demand charge”
- **Data – Peter Drucker “If you can’t measure it, you can’t manage it.”**
- **Energy Profiler Online**
- **Case Studies – Leveraging Data**
- **Customer of the future**
- **Connected Solutions**
- **Questions**



RI Energy Efficiency Program Tracks

- **Retrofit**

- Existing Buildings
- The incentives help you convert to high efficiency equipment or systems
- Prescriptive and Custom approaches
- RI Energy and their consultants work with you on identifying “measures” and securing incentives
- Incentives cover a portion of the cost with the potential for On Bill Repayment options

- **New Construction**

- New or major renovations
- RI Energy and their consultants guide you through the process (Program managed by Leidos)
- The incentives are designed to cover a portion of the cost to upgrade to high efficiency equipment and systems

Energy Management System

EMS (Redesigned for easier participation)

- **Prescriptive**

Project Type	Incentive Rate (\$/sequence/sqft)
Add On Sequences to Existing BMS	\$0.10
First Time BMS Installation	\$0.15
Replacement of Legacy BMS	\$0.20



- **Custom**

- Covers New Control strategies that save energy and do not fit in the “prescriptive” pathway

Rates & Demand Charges

G2

- Demand Charge – Excess 10kW \$8.58 plus Transmission Demand \$4.97 (<\$13.55)
 - PF 90% of kVA
 - 75% of the greatest Demand as so determined above during the preceding 11 months (Ratchet)

G3

- Demand Charge – In excess of 200 kW \$6.98 plus Transmission Demand \$5.07 (<\$12.05)
 - Peak Hours – June-September 8 a.m. to 10 p.m. Weekdays
 - PF 90% of kVA
 - 75% of the greatest Demand as so determined above during the preceding 11 months (Ratchet)

ICAP

- The hidden demand charge (2022/2023 \$3.80; 2023/2024 \$2.00; 2024/2025 \$3.98)
**September 7, 2023 system peak hour ending 18:00*

Energy Profiler Online (G3 Customers)



Rhode Island Energy™
a PPL company

- Energy Profiler Online™ (EPO) allows you to understand how your electricity is used within your operation over time. Review load shapes by day, week and month
- Improve your budgeting and reporting capabilities
- Password protected—you decide who can access and review the information
- Manage your energy consumption—identify what's normal and abnormal usage
- View load profiles, usage history and information for multiple sites from previous months or years
- See the results of your energy efficiency and conservation efforts at each site
- Shift your energy usage to lower-cost time periods and move dollars to your bottom line
- Guide for information to shopping wisely with power suppliers
- Optional—ability to monitor your power factor

For more information on EPO click [HERE](#)

Enhanced Metering

Service Option 1: Wireless Service (cellular meter)

- Existing meter is replaced with a cellular interval meter
- Interval data will be available if the customer signs of for EPO
 - One time fee of \$679.00 and annual data plan of \$17.00

Service Option 2: Phone line/land line - \$350.58

Service Option 3: MODEM (Pulse output KYZ box installed on existing meter)

- A pulse output box is installed on existing meter to allow use with your energy management system

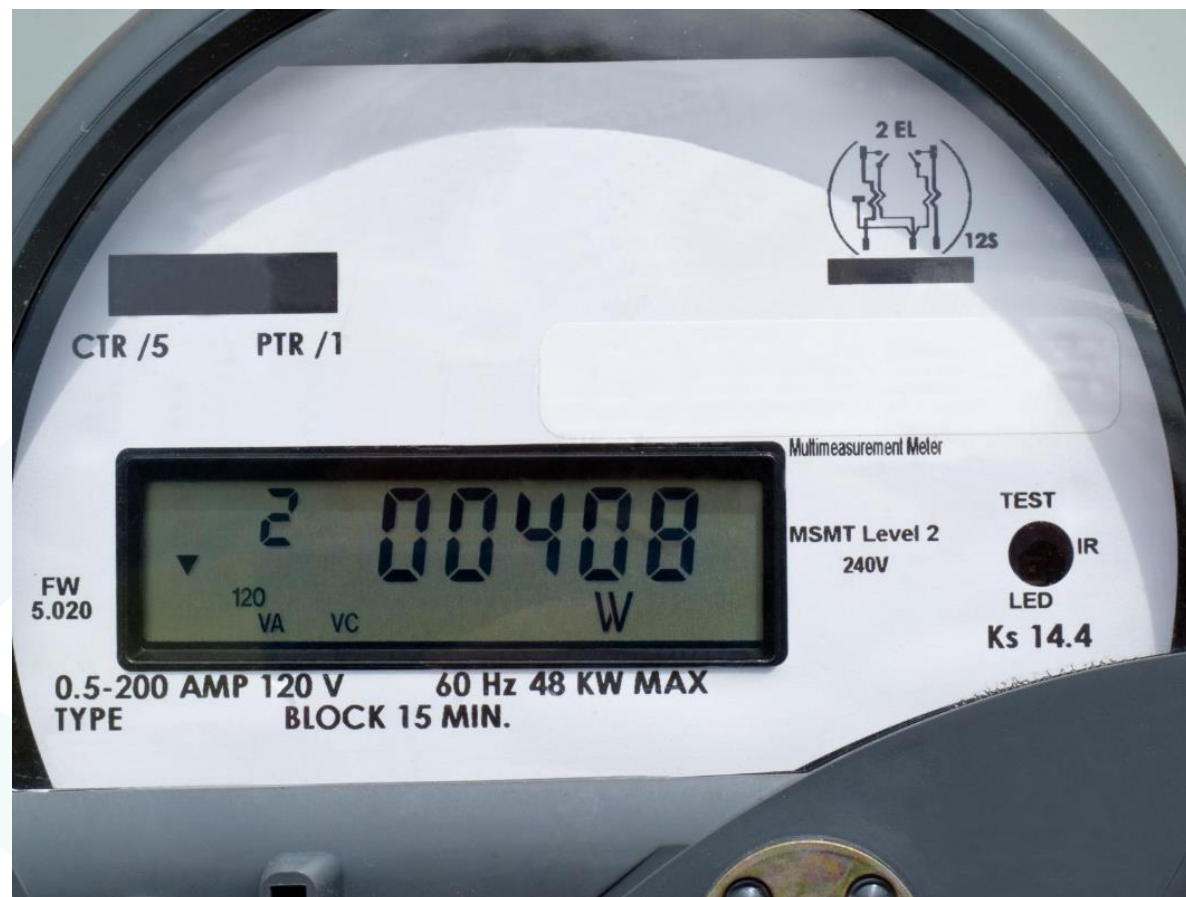
For more information on Enhanced Metering click [HERE](#)



Rhode Island Energy™

a PPL company

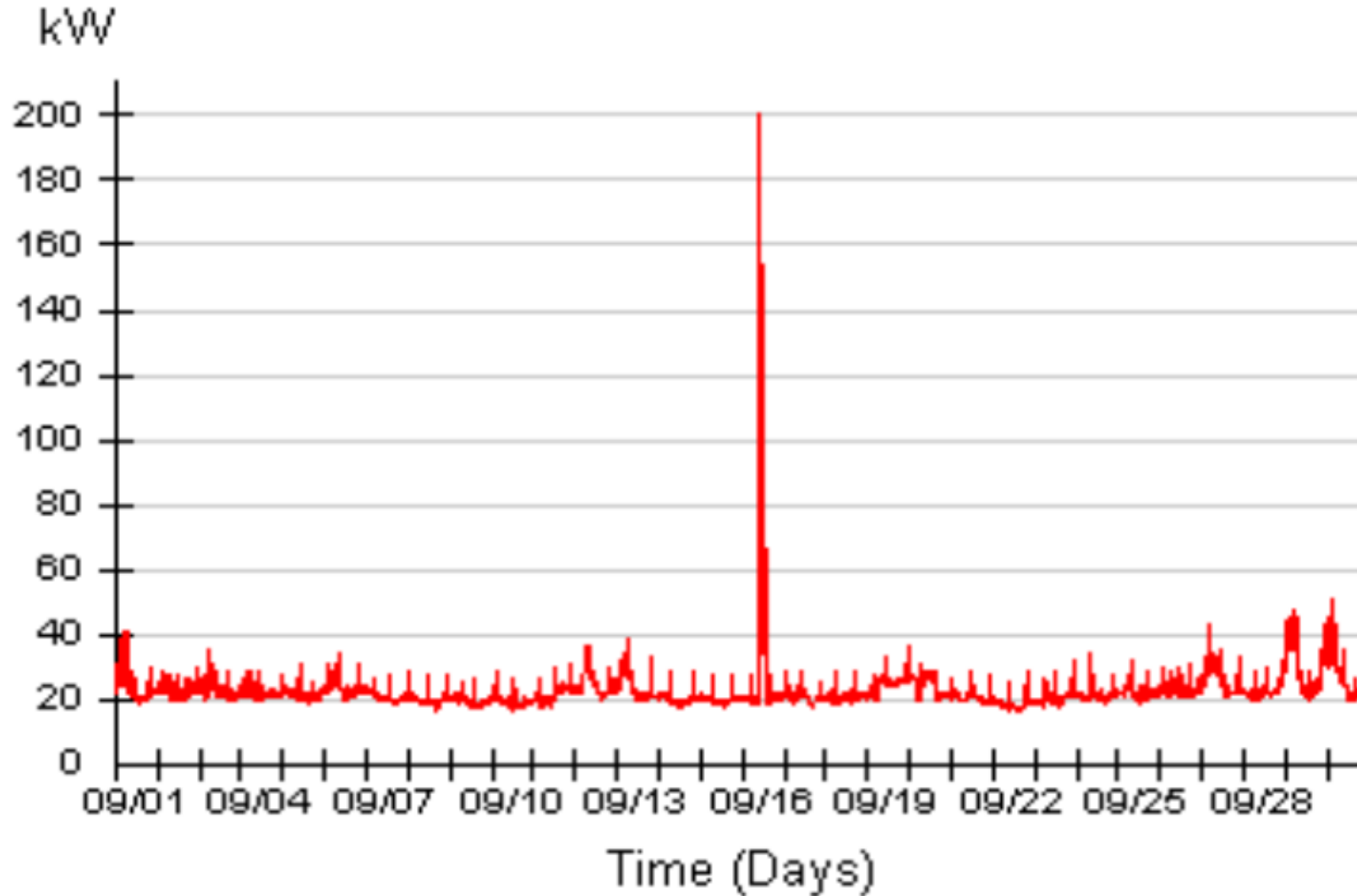
Leveraging information from your meter for low/no cost savings!



Cooling an empty building for workers to move equipment cost this customer \$800



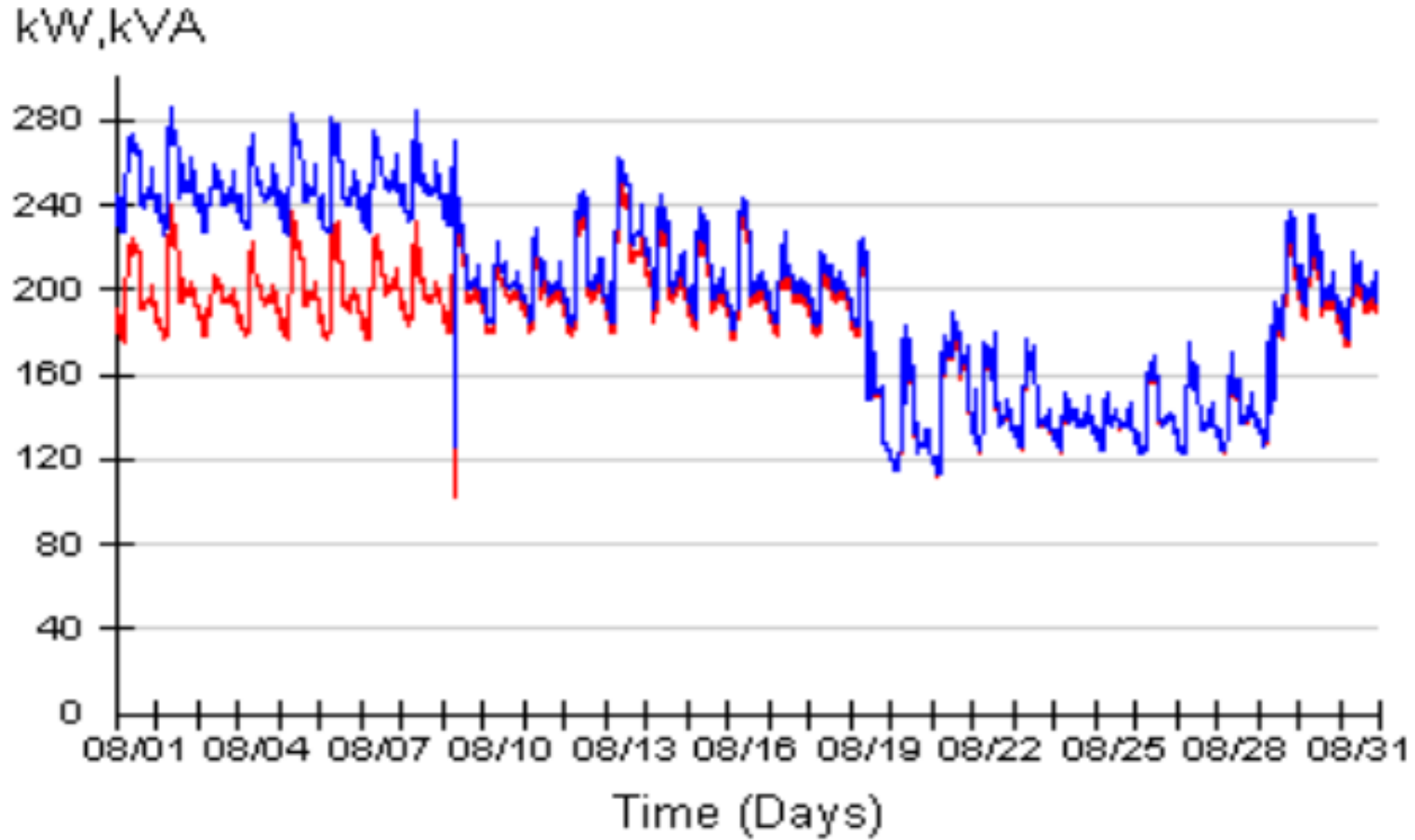
Rhode Island Energy™
a PPL company



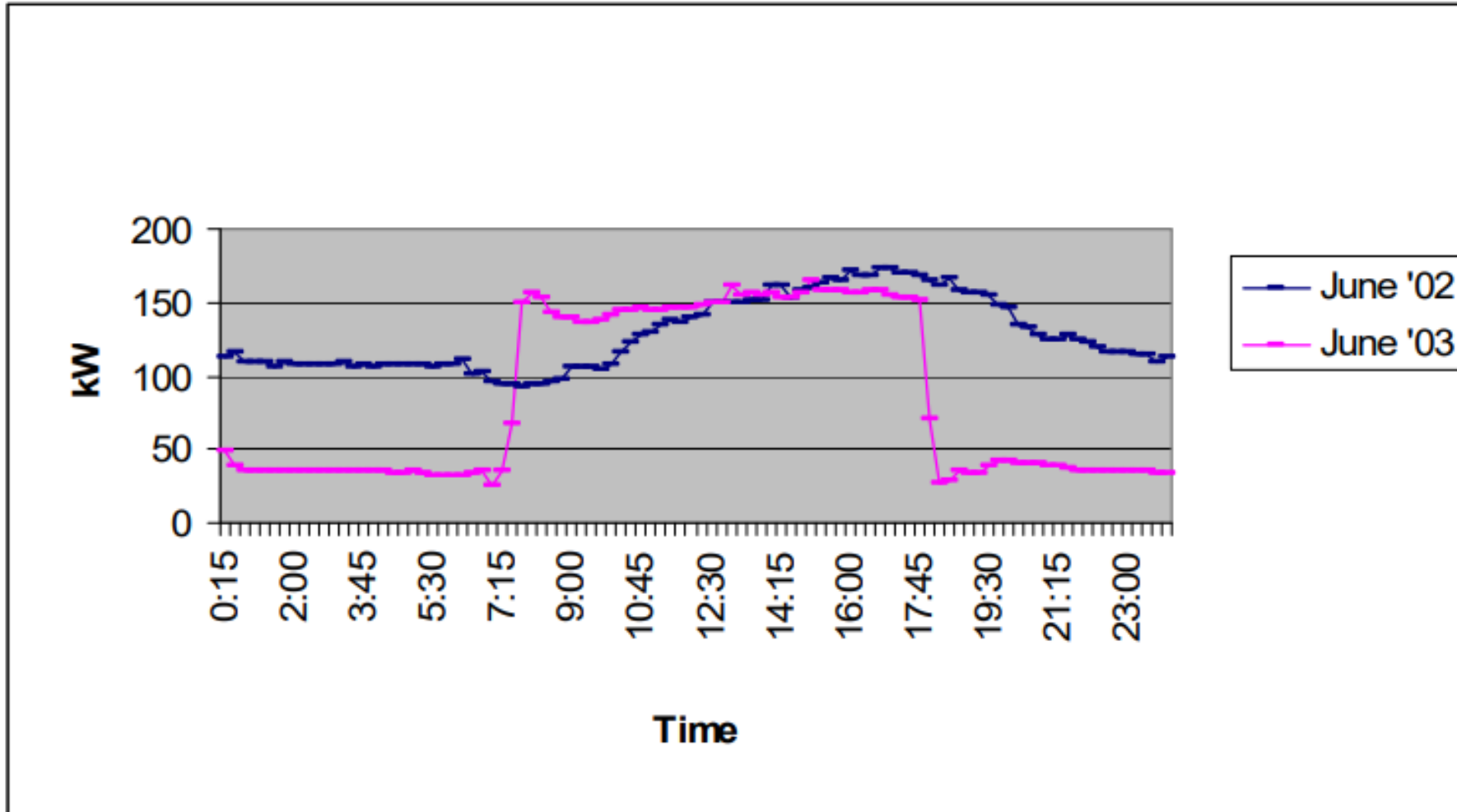
Monitor your Power Factor



Rhode Island Energy™
a PPL company



EMS Installation saves \$25-\$30K annually!

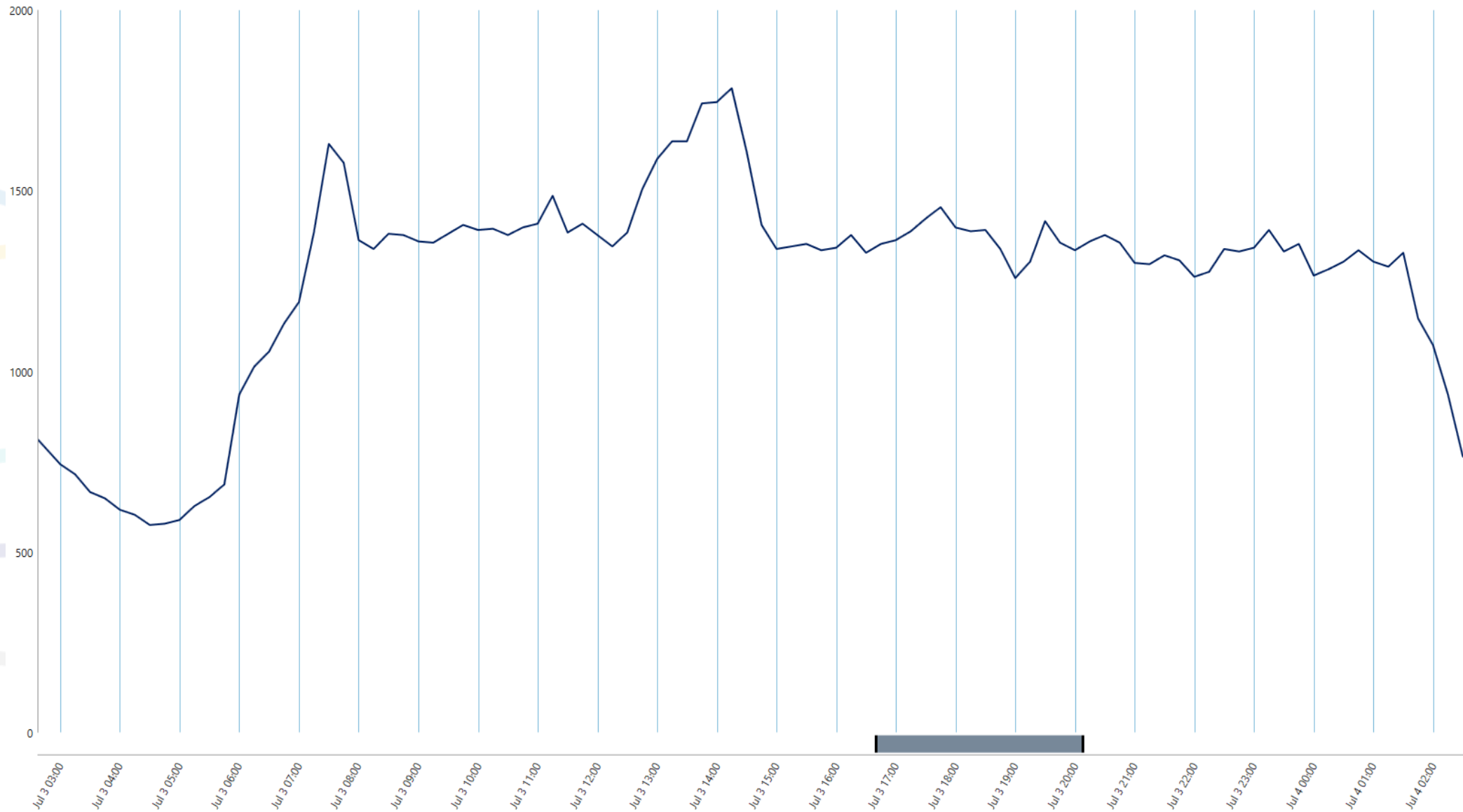


Building Load Shape Today



Rhode Island Energy™

a PPL company

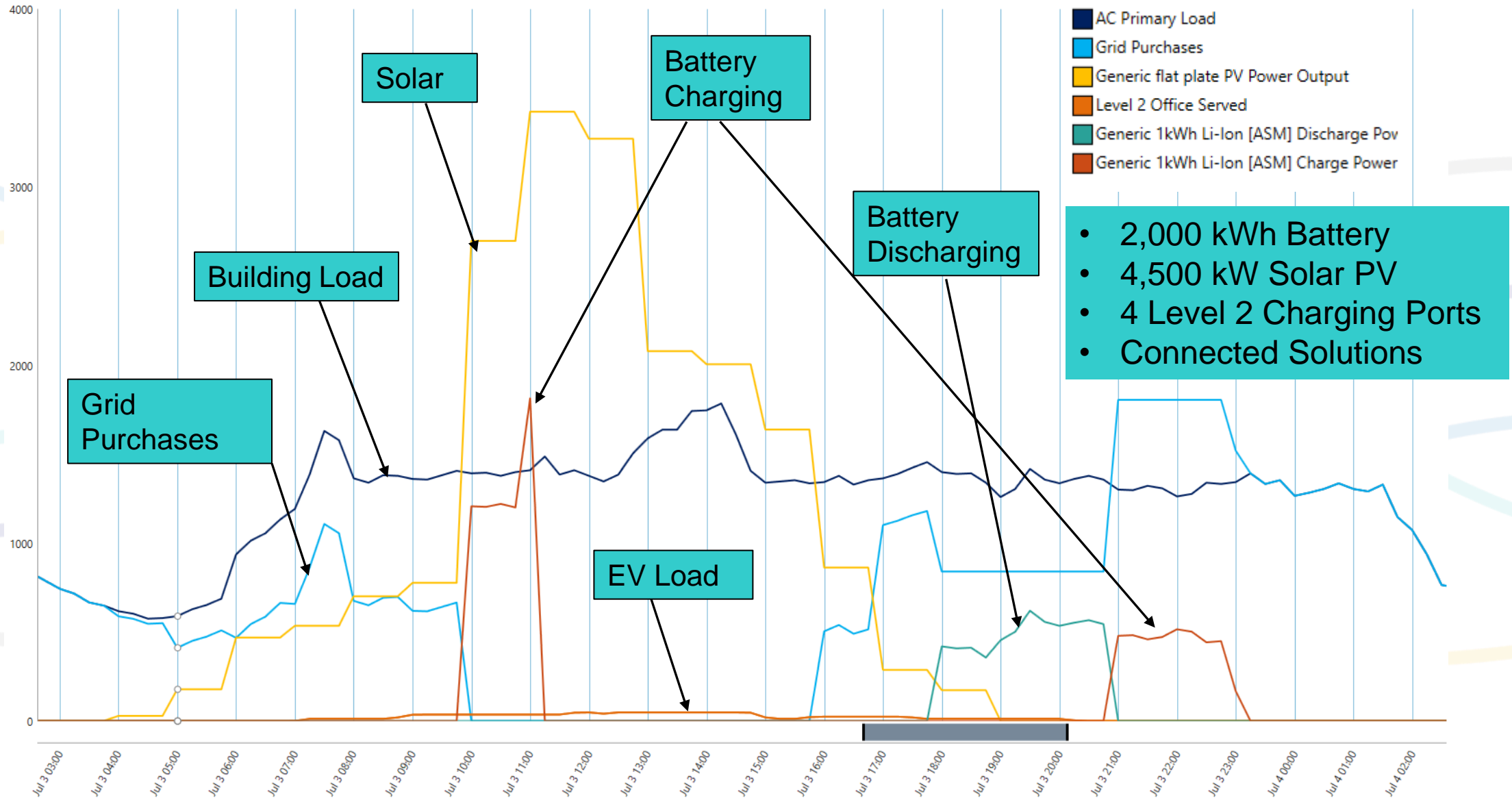


Building Load Shape In The Near Future



Rhode Island Energy™

a PPL company



Connected Solutions



Rhode Island Energy™
a PPL company

Summer Targeted Dispatch

- 2-8 periods per summer
- \$35/kW incentive
- June-September
- Duration 3 hours



Daily Dispatch

- 30-60 periods per summer
- \$300/kW incentive
- June – September
- Duration 2-3 hours



<https://www.rienergy.com/RI-Business/Energy-Saving-Programs/ConnectedSolutions>

Questions?



Rhode Island Energy™

a PPL company

Mike Cunningham – RI Energy
MHCunningham@RIEnergy.com
(401) 338-2208

Ron Gillooly, CEM
ronald.c.gillooly@leidos.com
(508) 922-6835
Thank you!