

# Effective Funding & Finance Technical Assistance Approaches: *Insights from New York & New England Environmental Finance Centers*

Tess Clark, SU-EFC | Chloe Shields, NEEFC  
NY-NEWEA Joint Spring Technical Conference  
June 9, 2023



**Environmental  
Finance  
Center**  
Syracuse University

*New England*  
**neefc**  
Environmental Finance Center



# Outline

**1** Context

**2** What is Technical Assistance (TA)?

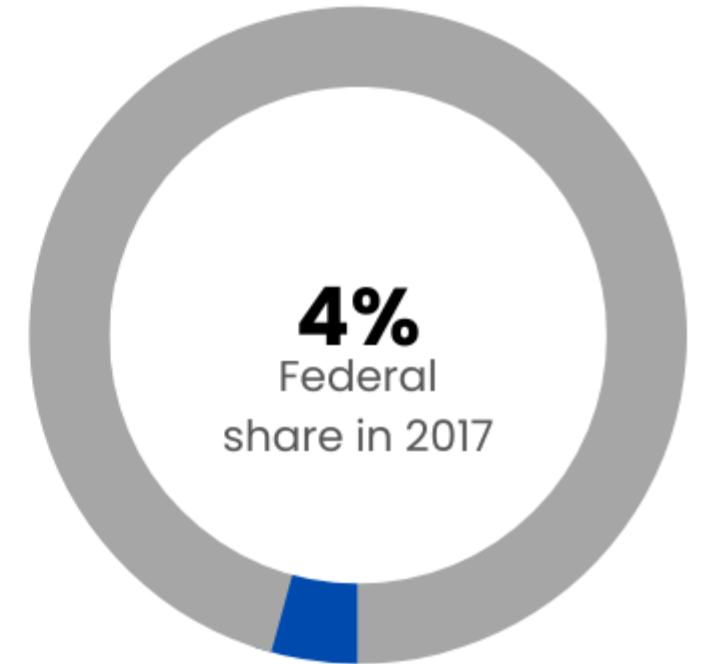
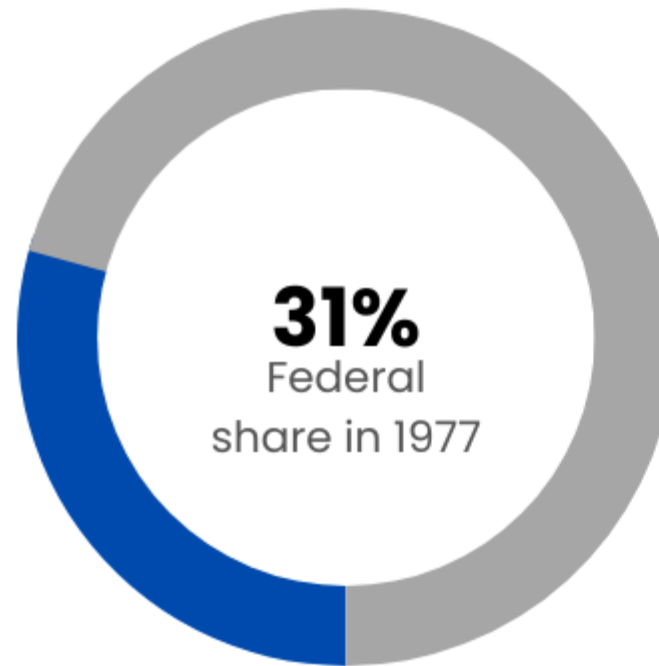
**3** EFC TA Case Studies

**4** Expanded Opportunities for EFC Water TA

**5** Contact Info & Questions

# Investment in Water Infrastructure

In 2017, the federal government provided just **four percent** of capital investment in water and wastewater infrastructure, down from **31 percent** in 1977.



# Persistent Disparities in Access to Safe, Clean Water



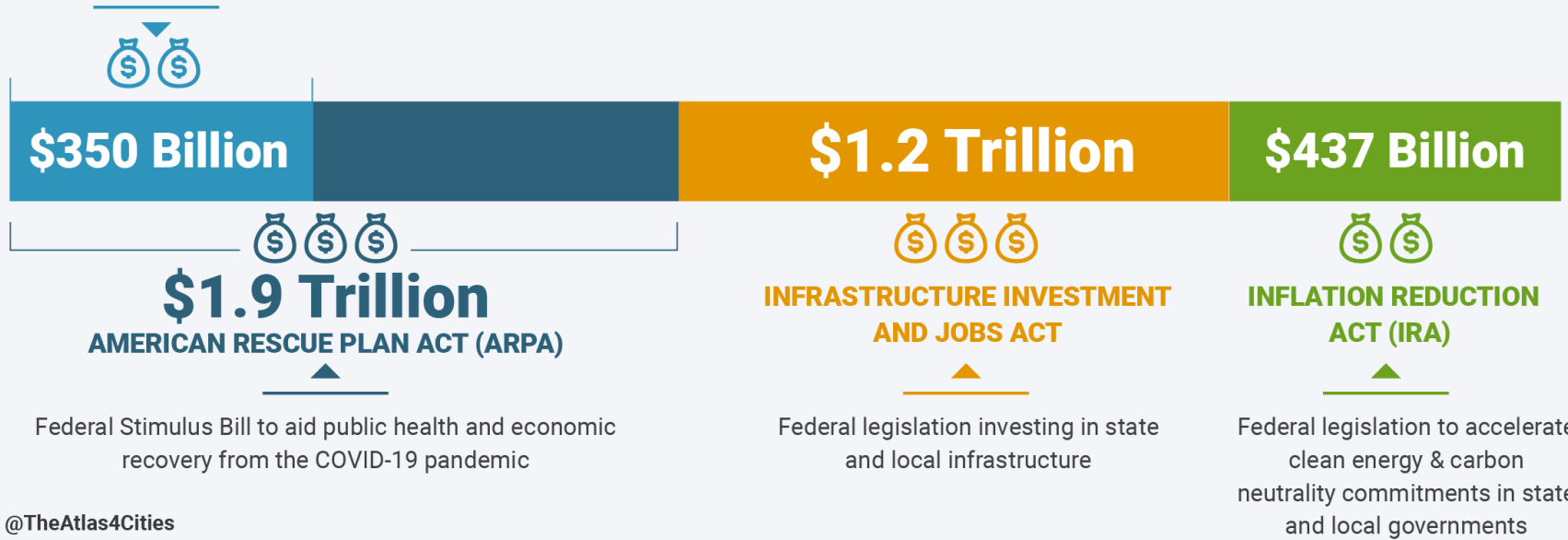
*In communities with higher populations of black and Hispanic individuals, SDWA health violations are more common...it is in the poorest of communities that race and ethnicity seem to matter most in determining drinking water quality*

# Historic Federal Infrastructure Investment

## Federal Infrastructure Funding for State & Local Governments

Signed in 2021 - 2022

**CORONA VIRUS STATE AND LOCAL FISCAL RECOVERY FUNDS** Additional emergency ARPA funding for state, local, territorial and tribal governments



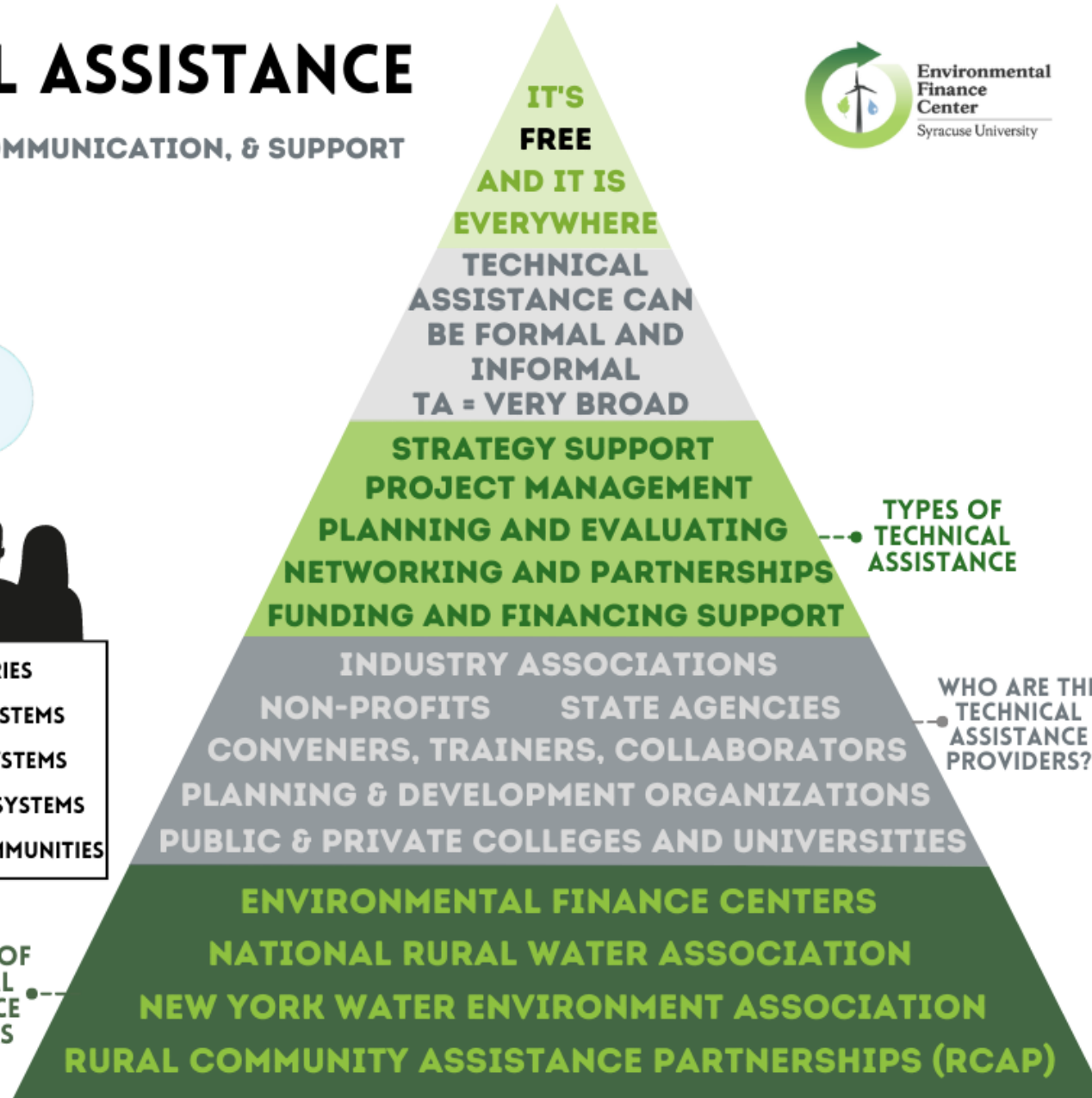
@TheAtlas4Cities

IIJA (BIL) alone includes **\$50 billion** for water infrastructure via EPA

Emphasis on ensuring **equitable benefits** for disadvantaged communities

# TECHNICAL ASSISTANCE

COLLABORATION, COMMUNICATION, & SUPPORT



# TA Case Study: Climate Readiness & Flooding



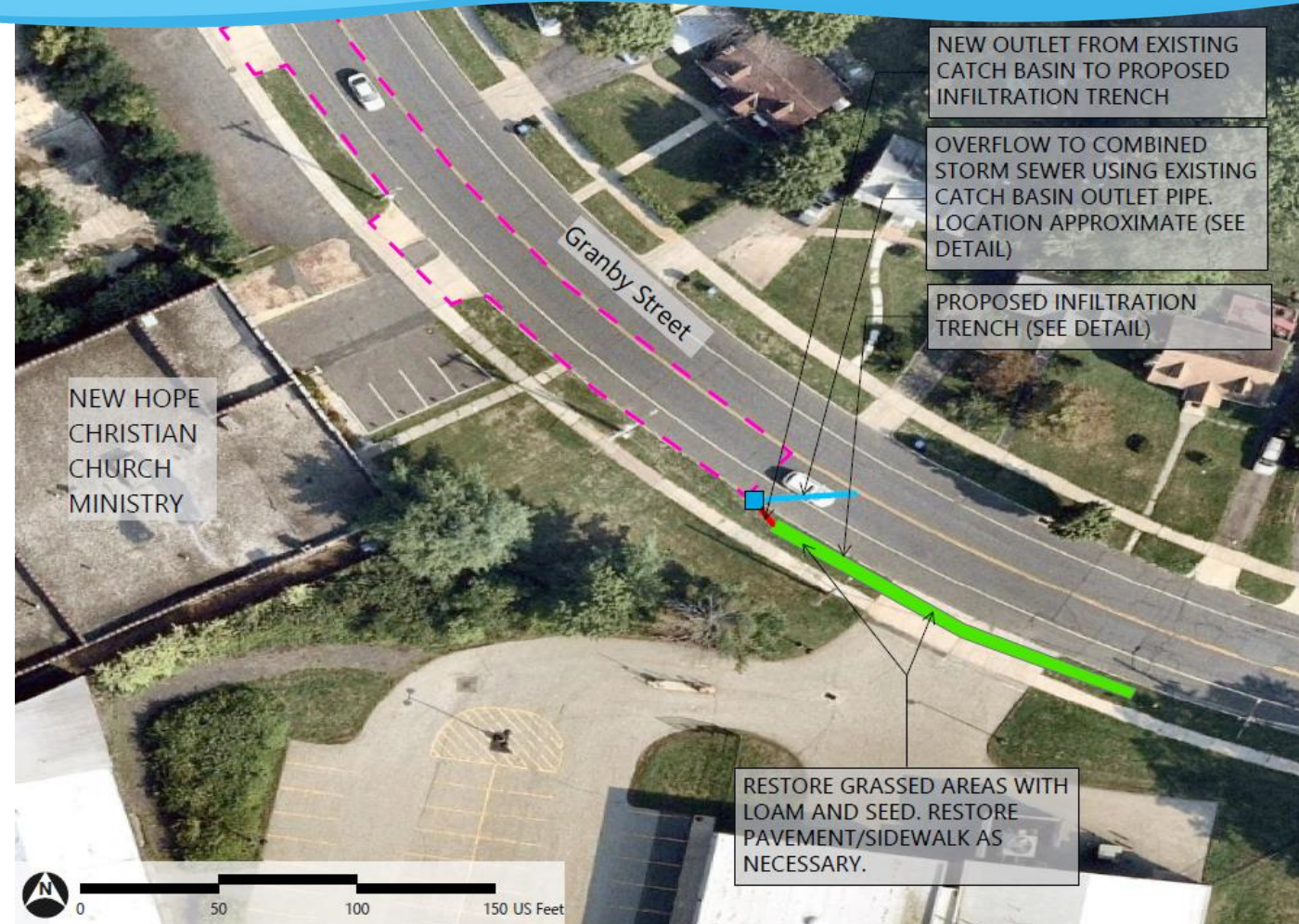
## Water Infrastructure Challenge

- Localized stormwater flooding
- Increased frequency/intensity of precipitation
- Densely developed urban areas
- Lack of flexible, small scale/small \$ solutions

# TA Case Study: Climate Readiness & Flooding

## What EFC Assistance Looks Like

- Convene and coordinate local and state gov, utility, EPA
- Technical solution that's replicable and scalable
- Access to and help navigating funding/financing to implement



Existing Catch Basin

Existing Pipe

Proposed Pipe

Proposed SCM Footprint SCM = Stormwater Control Measure

Approximate Contributing Area



# POSITION KNOWLEDGE INVENTORY

## TECHNICAL ASSISTANCE FOR WORKFORCE DEVELOPMENT

### Problem

- The struggle with permanently losing company knowledge from employee turnover and loss

### Need

- Capturing intricate details of company knowledge and preventing any further loss

### Solution

- Retain organizational knowledge and expertise through use of a personalized Position Knowledge Inventory form



Syracuse University Environmental Finance Center

New York State Tug Hill Commission

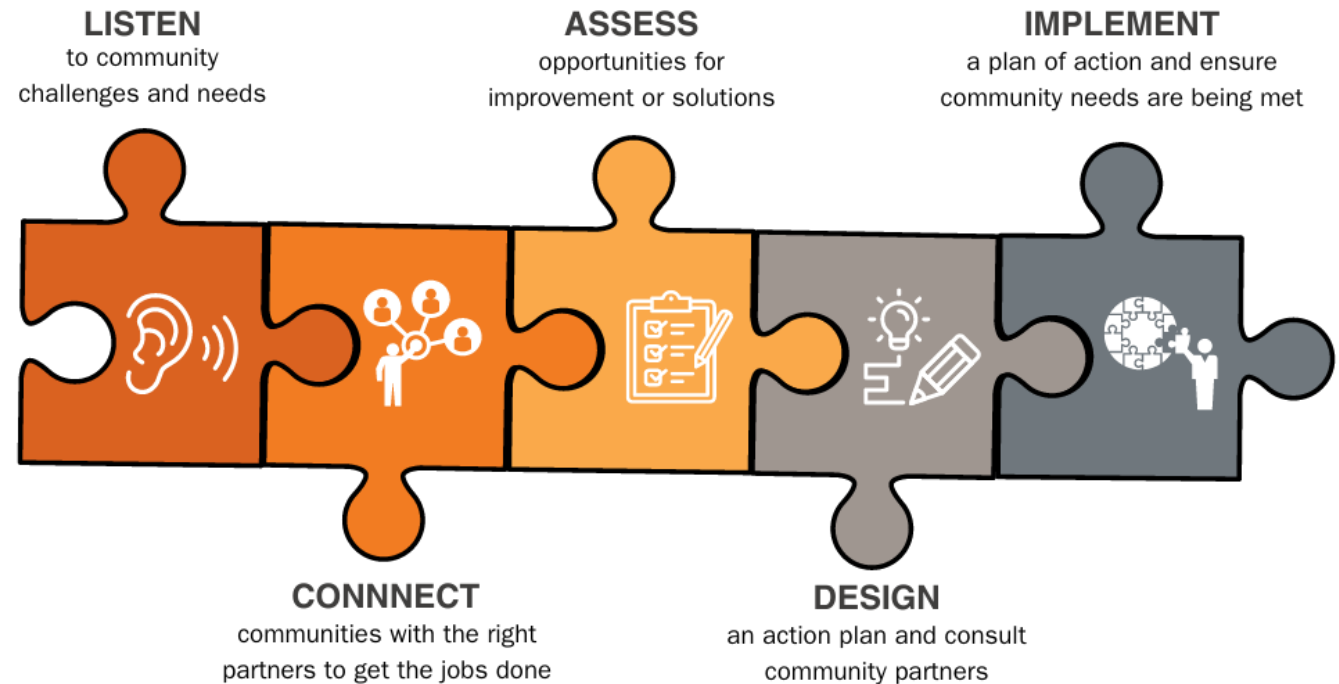
Northern Oneida County Council of Governments

# Expanded Opportunities for EFC Water TA under BIL

## WHAT:

- EFCs have an expanded mandate to bridge the gap between **community water infrastructure needs** and **increased funding** through the BIL

## HOW:



# Expanded Opportunities for EFC Water TA under BIL

## Partnerships & Engagement

- Community outreach
- Decision-maker & board education
- Water system partnerships
- Capacity building & training

## Planning & Assessment

- Climate resilience planning
- Workforce planning
- Asset management
- Other studies/assessments

## Project Development

- Identify/apply for pre-development funds for preliminary engineering
- Lead service line inventories
- Project design
- Environmental reviews

## Funding & Financing

- Rates & revenue analyses
- Financial planning
- Identify funding options
- Application support

## Project & Construction Management

- Bid support
- Change order review
- Project inspection
- Domestic preference & Davis Bacon assistance

# Contact Us



## **Syracuse University Environmental Finance Center**

[efc.syr.edu](http://efc.syr.edu)

### **Tess Clark, Program Manager**

pclark@syr.edu

315-443-1846



## **New England Water Infrastructure Network**

[neefc.org/water-system-management-finance](http://neefc.org/water-system-management-finance)

### **Chloe Shields, Deputy Director**

chloe.f.shields@maine.edu

207-228-8031



**Questions?**