

3D GIS and Virtual Reality for Facility and Asset Management



1990

Incorporated Civil Engineering & Land Surveying

2011

Incorporated 3D laser scanning and 3D BIM modeling into service offerings

2014

Focused 3D documentation and BIM modeling efforts on engineering infrastructure

2015

UAV mapping support added to service offerings

2017

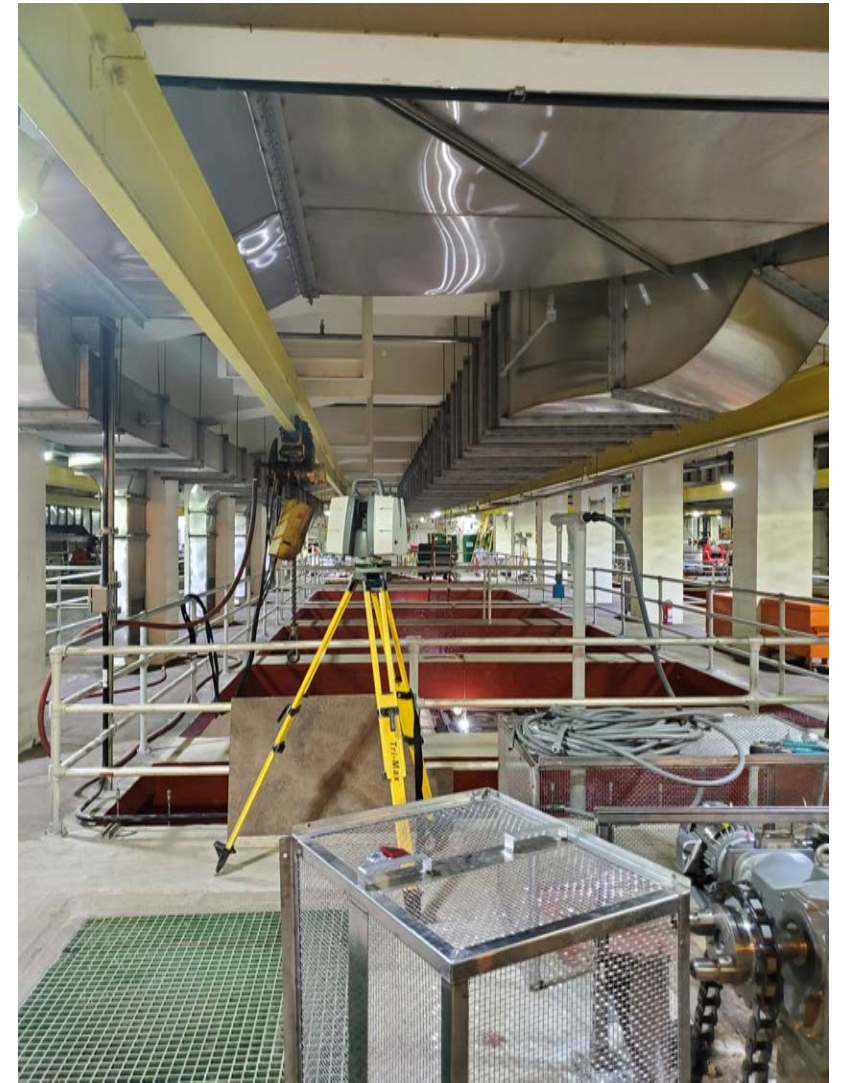
GIS Pilot project kick-offs

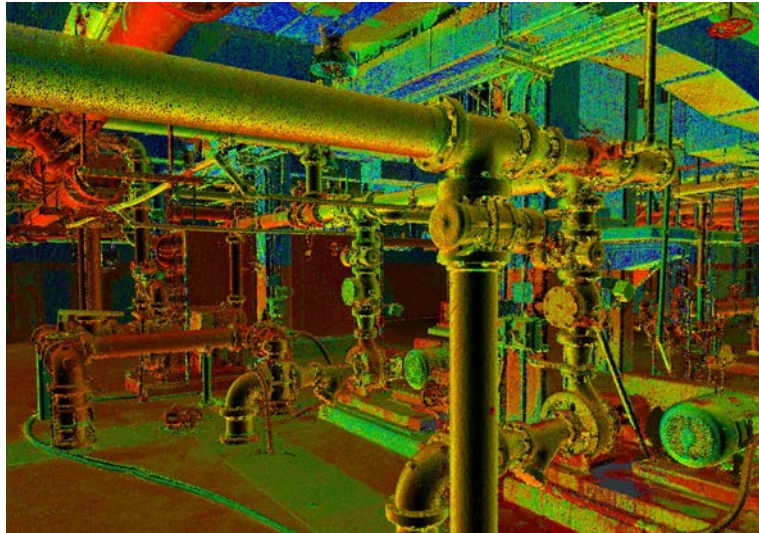
2020

Develop workflows for 3D modeling integration with ArcGIS and various asset management platforms

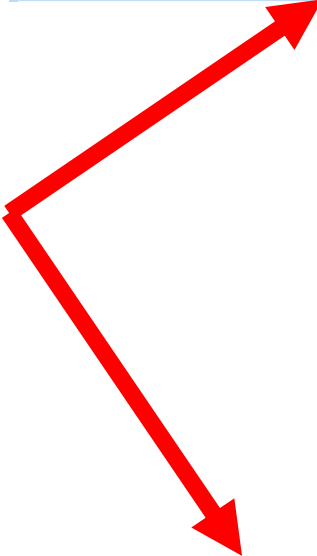
2021

Keynote Presentation at ESRI Infrastructure Management GIS Conference

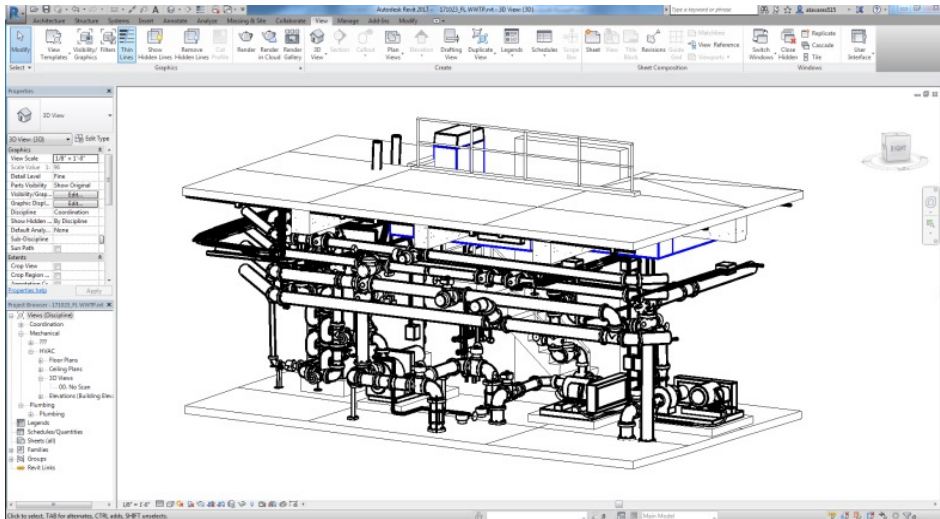




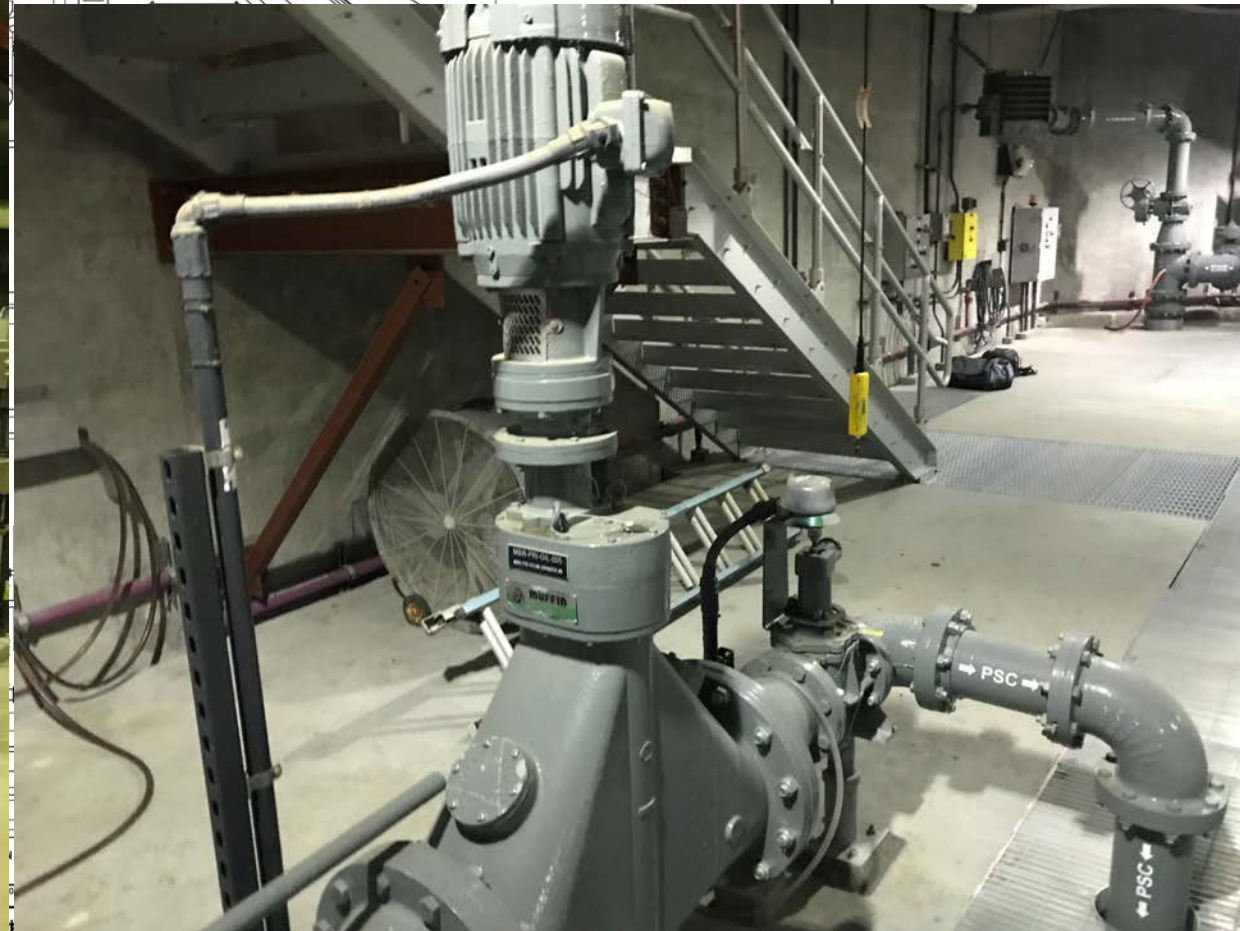
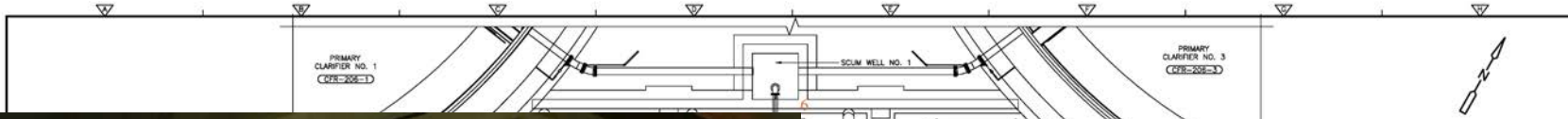
Asset Management



Field Operations







<table border="1"> <tr> <th>REV</th> <th>NO.</th> <th>DATE</th> <th>DRWN</th> <th>CHKD</th> <th>REMARKS</th> </tr> <tr> <td> </td> <td> </td> <td> </td> <td> </td> <td> </td> <td> </td> </tr> </table>				REV	NO.	DATE	DRWN	CHKD	REMARKS							<table border="1"> <tr> <th>REV</th> <th>NO.</th> <th>DATE</th> <th>DRWN</th> <th>CHKD</th> <th>REMARKS</th> </tr> <tr> <td> </td> <td> </td> <td> </td> <td> </td> <td> </td> <td> </td> </tr> </table>				REV	NO.	DATE	DRWN	CHKD	REMARKS							SHEET CHG'D BY: M. LIPSON CROSS CHG'D BY: B. FRANSEN APPROVED BY: B. FRANSEN DATE: SEPTEMBER 2011				Camp Dresser & McKee Inc. 8221 Cleveland Avenue, Suite 100 Irvine, California, CA 92714 Consulting • Engineering • Construction • Operations		City of Riverside Department of Regional Water Quality Control		Phase I Plant Expansion CONFORMED DOCUMENT AUGUST 2011 THE ADDENDUM TO BE JOINED TO THIS DRAWING AND LISTED IN THIS DOCUMENT. IF DISCREPANCIES BETWEEN THE ADDED SET AND THE ORIGINAL SET INCLUDING THE ADDENDA ARE FOUND, THE BIDDING SET WITH THE ORIGINAL ADDENDA SHALL GOVERN.		PUMP STATION LIGHTING/RECEPTACLE PLAN		DRAWING NO. 102-E-009 SHEET NO. 889 OF 1478	
REV	NO.	DATE	DRWN	CHKD	REMARKS																																								
REV	NO.	DATE	DRWN	CHKD	REMARKS																																								

WQCP - Scene - ArcGIS Pro

Project | Map | Insert | Analysis | View | Edit | Imagery | Share

Clipboard | Navigate | Layer | Selection | Inquiry | Labeling | Offline

Command Search (Alt+Q) | Zachary (LandTech Consultants Inc.)

Contents

Search

Drawing Order

- Scene
 - 3D Layers
 - CPL_ATC1
 - SDP
 - PSL
 - PSC
 - GIL
 - FSA
 - FEA
 - CPL
 - COH
 - Floorplan_Polygon

Pop-up


GIL (1)

DocName

GIL - DocName

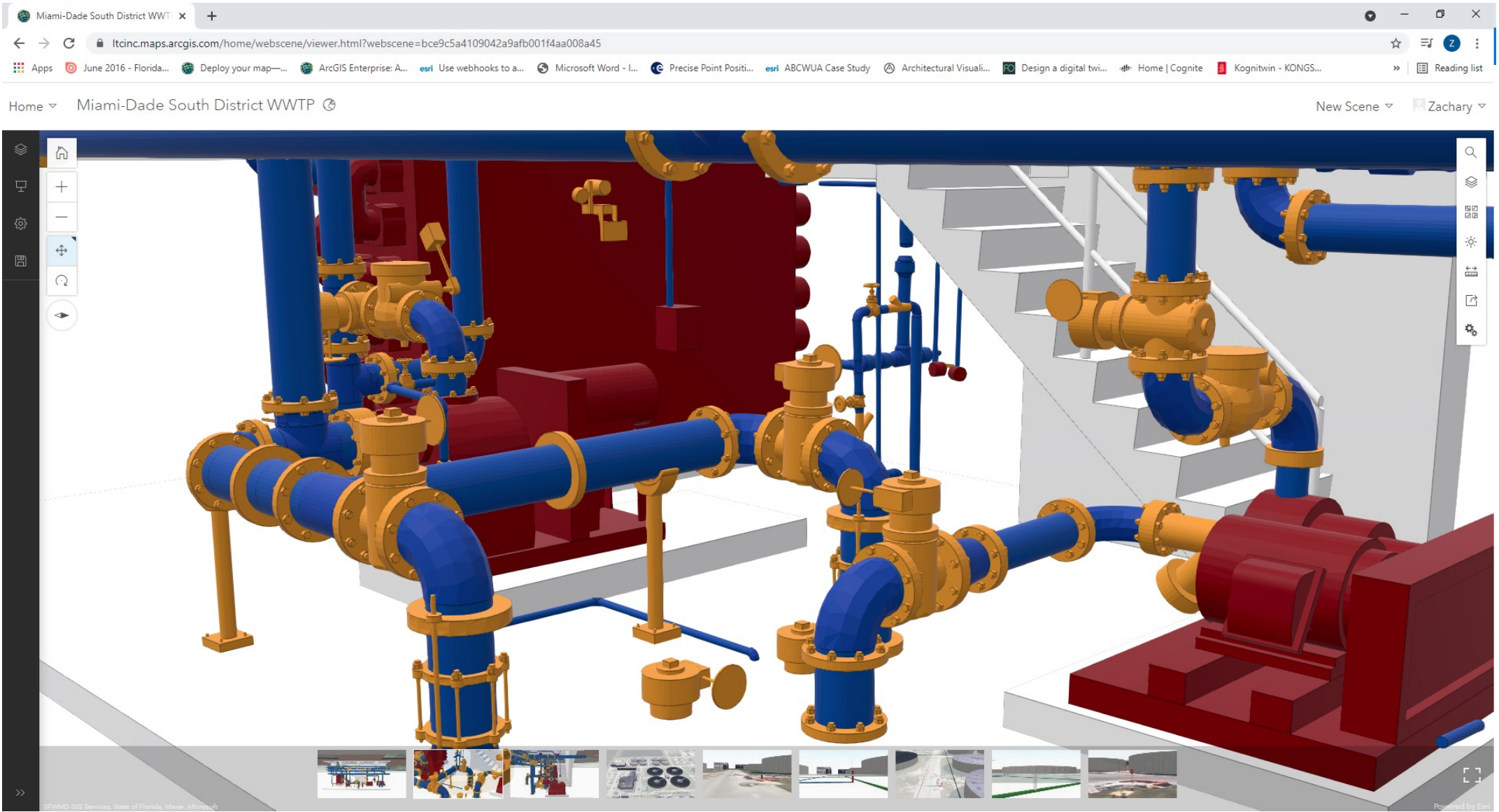
OBJECTID_1	4
Asset_Record_Type	Q
Asset_Id	MBR-PRI-GIL-005
Department	4125
Area	412540
Asset_Desc	GRINDER, IN LINE, SCUM, # 5, JWC, MBR PRIMARY PUMPING STRUCTURE
BldgLevel	Level -1
ObjectId	731544
FamilyType	Custom_Valve_12

MBR-PRI-GIL-005 x2.JPG



1 of 1 | 117.4563469°W 33.9643881°N | Selected Features: 1

Pop-up | Job Status | Symbology



Tank Report

1 of 9

OBJECTID_1	1
SITE_ID	16_ALASKA
ASSET_ID	505863
TANK_NAME	1
CAPACITY_GALLONS	75000
TANK_LEVEL%	65
TANK_TEMP_F	68
STATUS	
SCADA	
MXASSETNUM	
MXSITEID	



Tank 1

65%

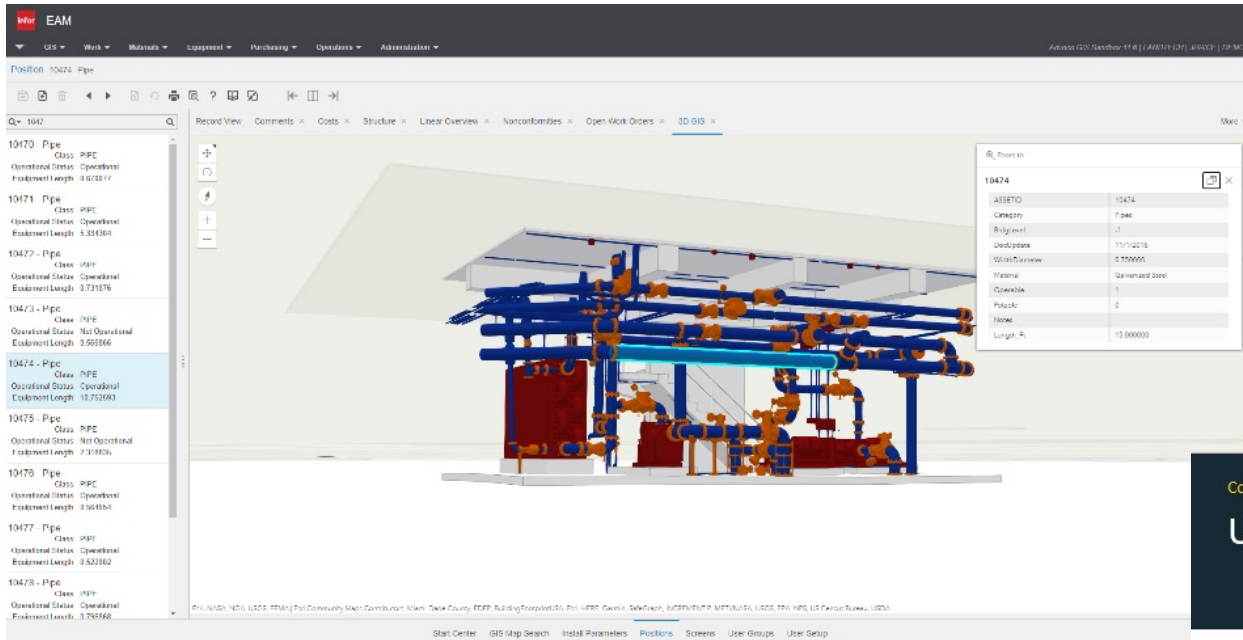
Tank 2

95%

Home

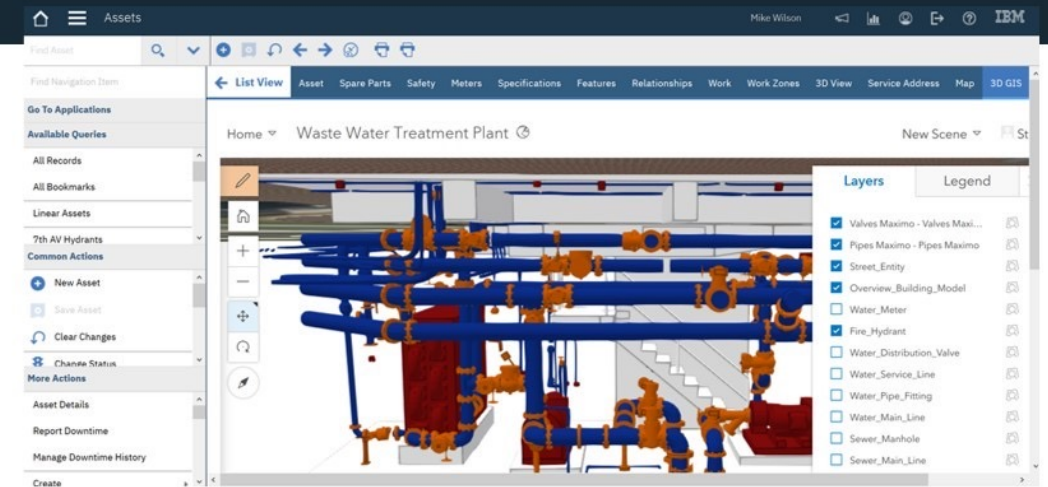
New Scene Zachary





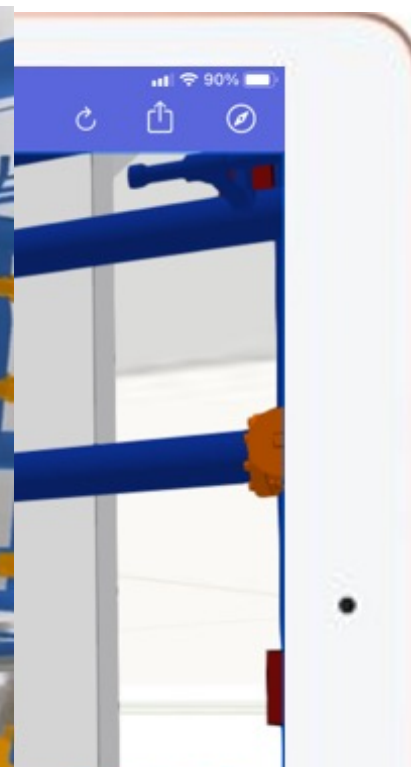
Coffee Chat: 3D GIS and Maximo

Use Case Example



Software Integration







Clipboard: Cut, Copy, Copy Path

Navigate: Explore, Bookmarks, Go To XY

Layer: Add Preset, Add Graphics Layer

Selection: Select, Select By Attributes, Select By Location, Attributes, Clear

Inquiry: Measure, Locate, Infographics, Coordinate Conversion

Labeling: Pause, Lock, View Unplaced, Convert, More

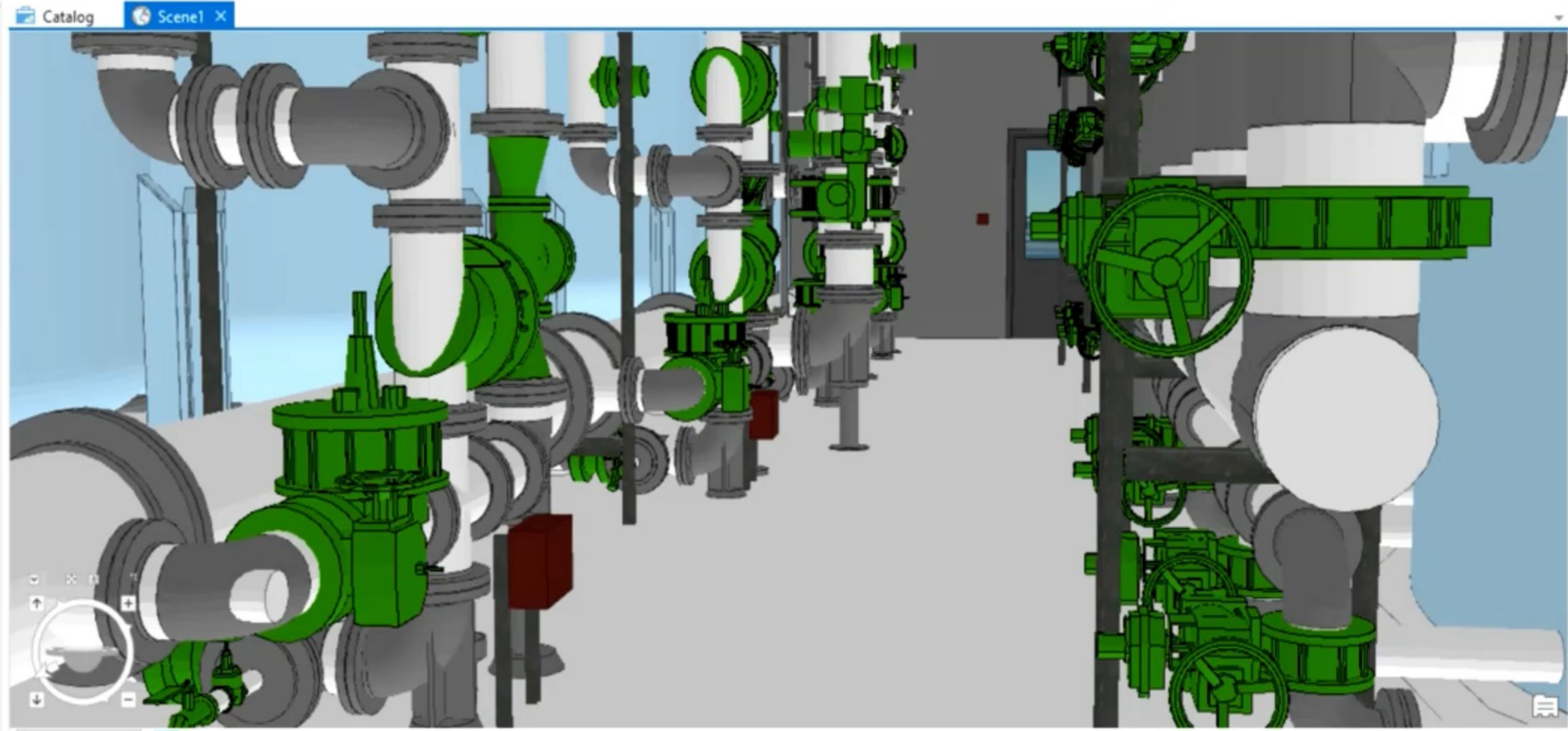
Offline: Sync, Remove, Download Map

Contents

Search

Drawing Order

- Scene1
 - 3D Layers
 - Pump
 - Tank
 - Pipes
 - PipeFitting
 - PipeAccessory
 - FlexPipes
 - MechanicalEquipment
 - Ducts
 - DuctFitting
 - DuctAccessories



1.40 m | 77.0202256°W 38.8181265°N | 0.657 m | Selected Features: 1

Tank Pump PipeAccessory

Field: Add Calculate Selection: Select By Attributes Zoom To Switch Clear Delete Copy

1 of 3 selected

Filters: 100%

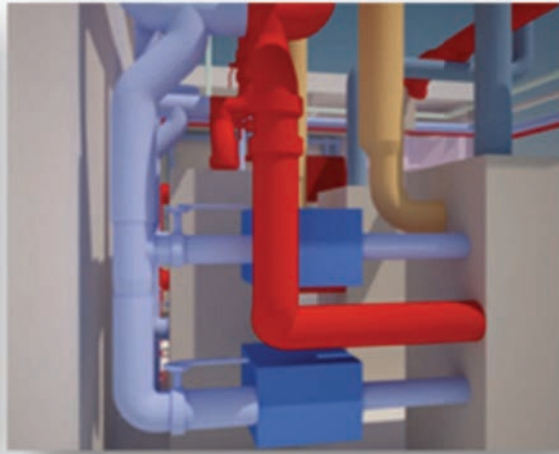
The logo features the word "Land" in a bold, red, 3D sans-serif font, followed by "Tech" in a grey, 3D sans-serif font. Below "Tech" is the number "3D" in a large, green, 3D sans-serif font. A green laser line originates from a bright green starburst on the left and passes through the "Land" and "Tech" text, ending at the "3D".

LandTech
3D

3D GIS
for
ASSET MANAGEMENT



LOD 200



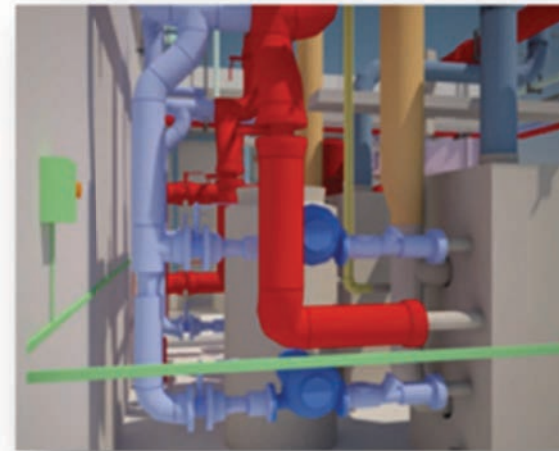
LOD 300



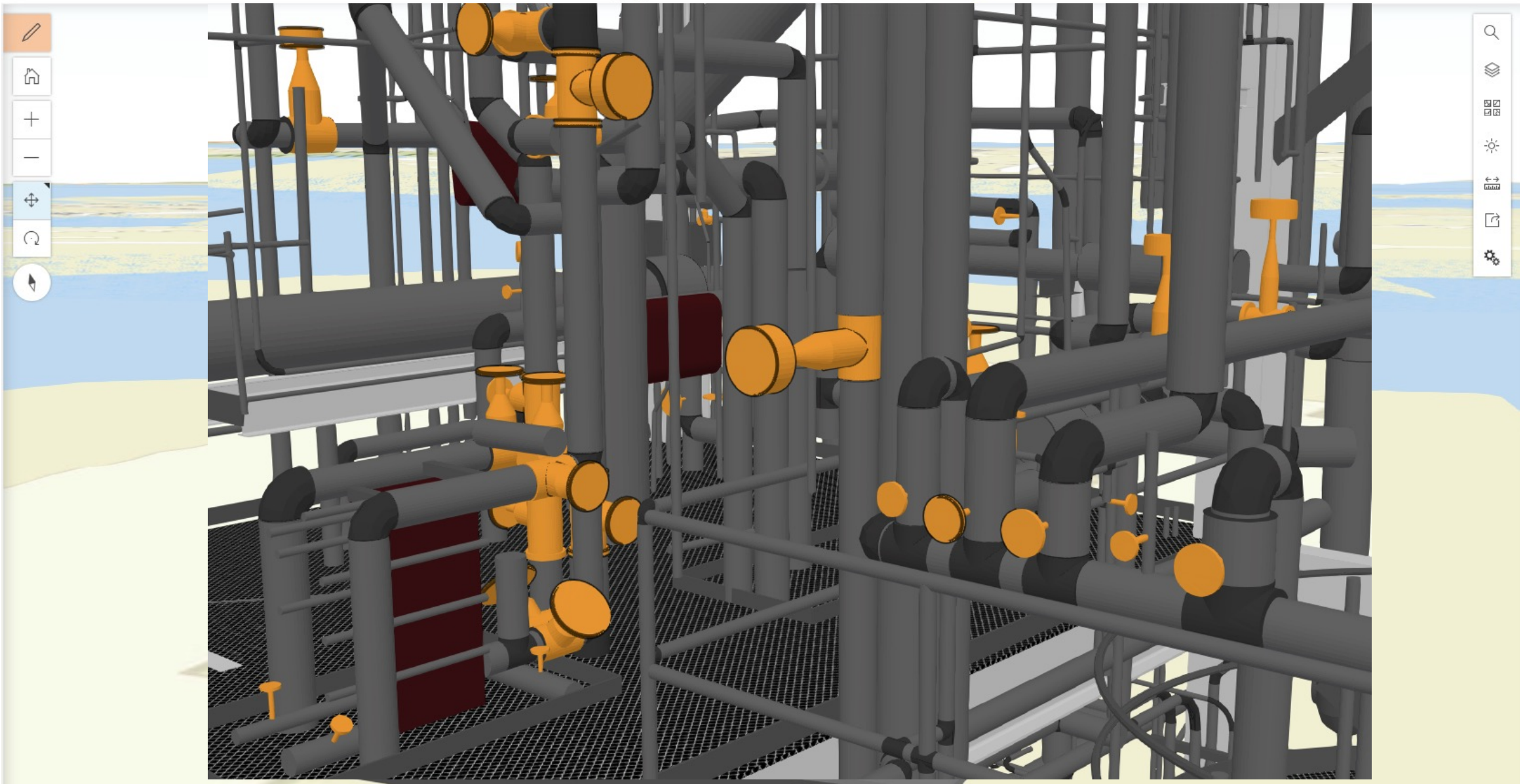
LOD 350

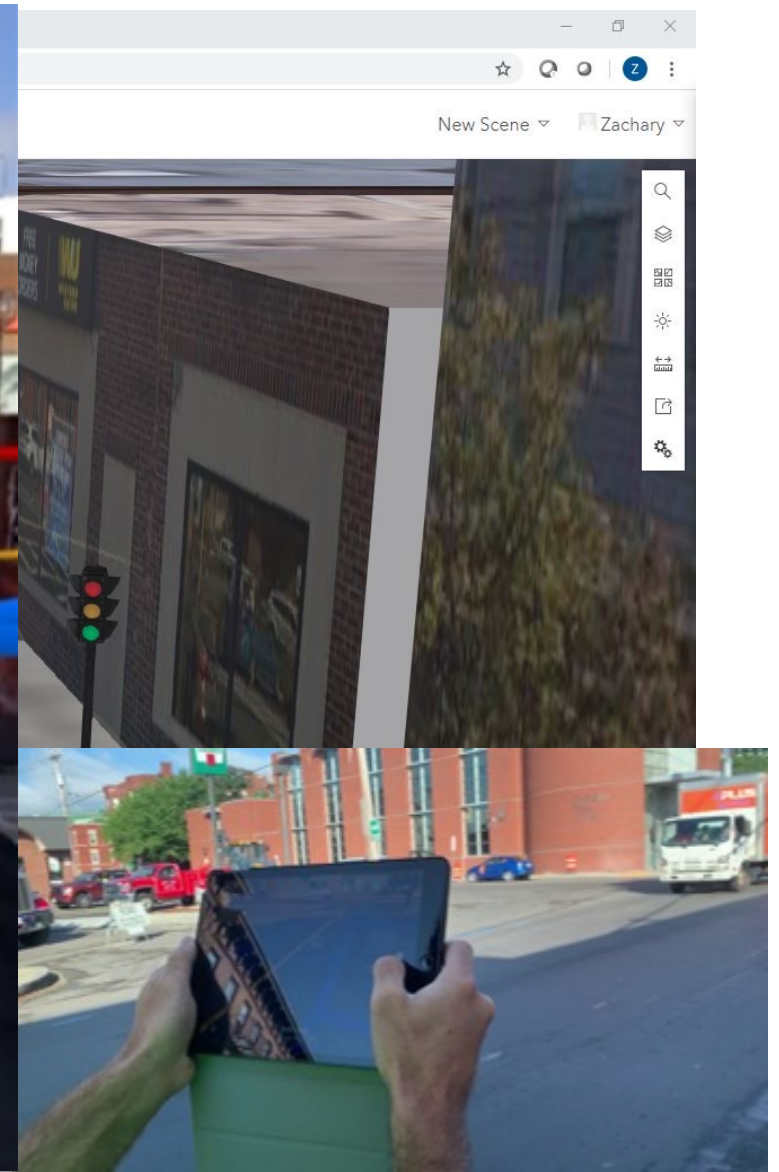
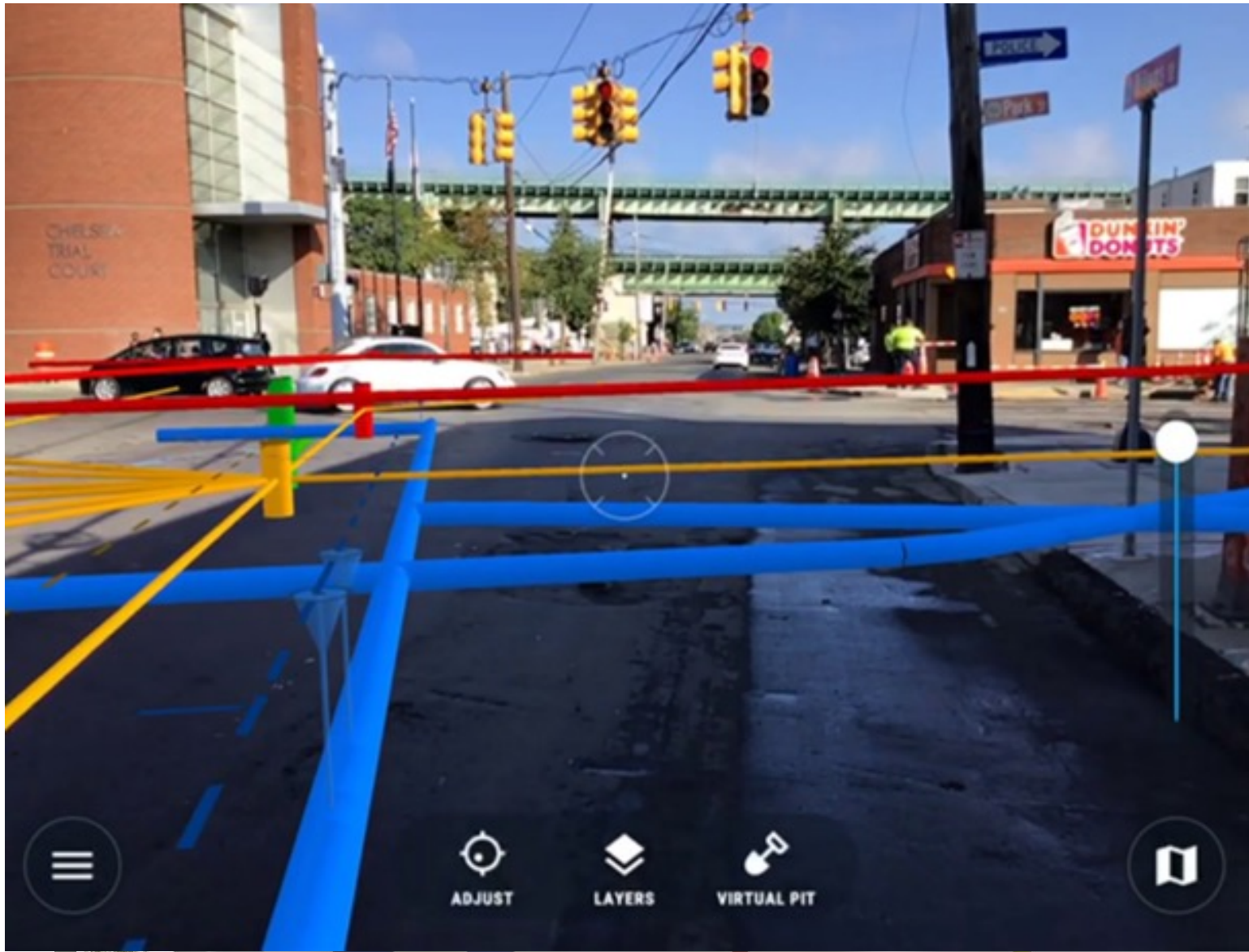


LOD 400



LOD 500



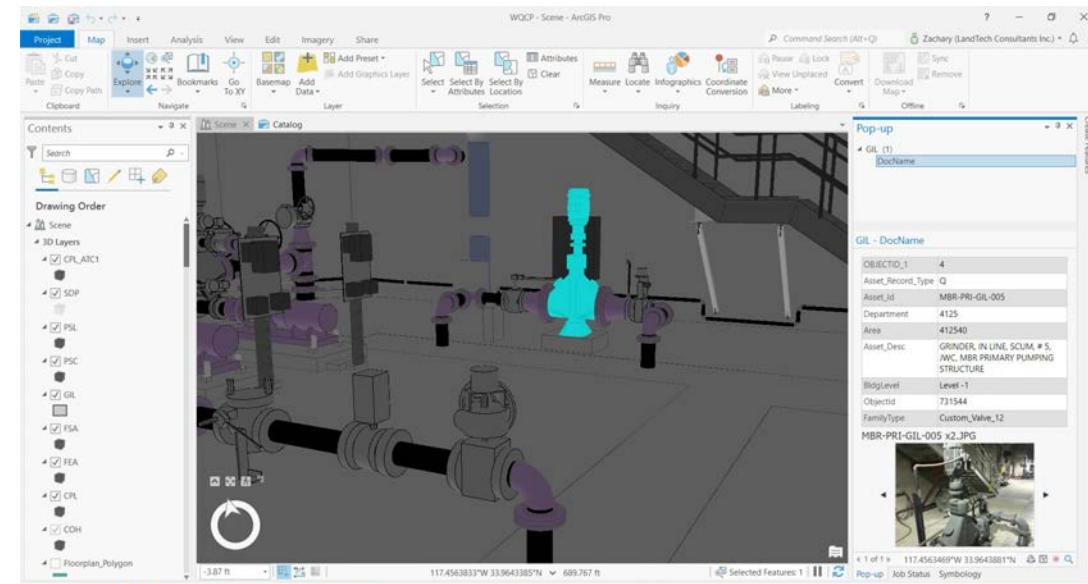
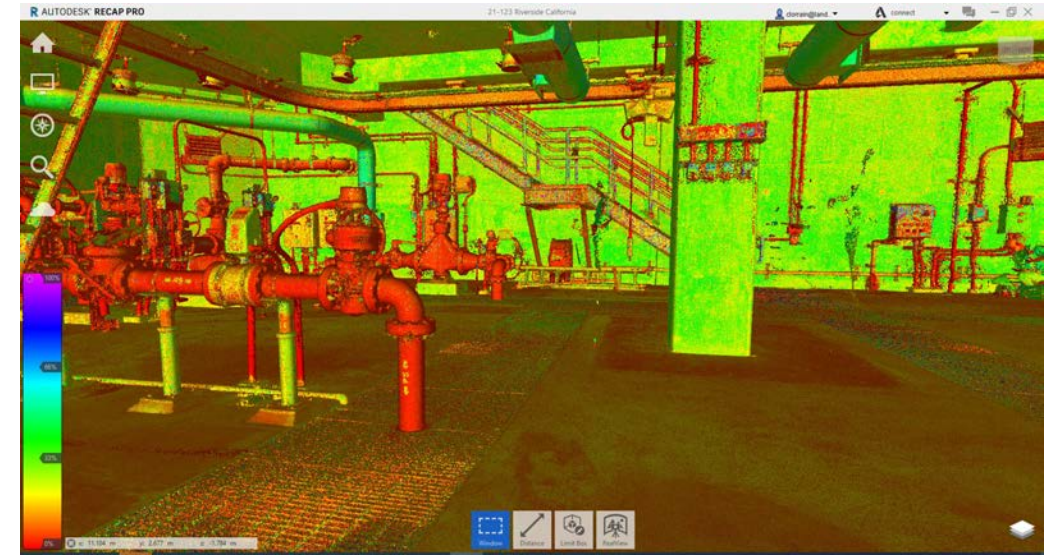


The logo features the word "LandTech" in a bold, sans-serif font. "Land" is rendered in red with a 3D effect, while "Tech" is in grey with a 3D effect. A horizontal grey bar is positioned above the letters. Below "Tech", the letters "3D" are displayed in a large, green, 3D font. A green laser line originates from a bright green starburst on the left and extends horizontally across the "Land" portion of the logo.

LandTech 3D

**3D GIS
for
UTILITIES
and
ASSET MANAGEMENT**

- Asset location and asset information all in one
- Centralized storage repository
- Data access enterprise wide
- Real time data
- 3 deliverables all in 1!



Contact

Chris Lorrain, P.E.
President
Cell: 978-265-2400
Email: clorrain@landtechinc.com

Zachary Jaffe
GIS Coordinator
Cell: 617-894-4252
Email: zjaffe@landtechinc.com