

Some Things Neighbors Should Not Share;

The Story of Successfully Separating Shared Sewer Laterals

January 26, 2022

Michael Stein, PE



City of Rockland



- Population of over 7,000 permanent residents
- Nestled in the mid-coast region of the State of Maine on Penobscot Bay
- Departure point for the Ferry service to the islands of Penobscot Bay including Vinalhaven, North Haven, and Matinicus
- Noted for its importance to the Maine lobster industry and its prominence for the arts

City of Rockland



Rockland is a popular tourist destination home to the:

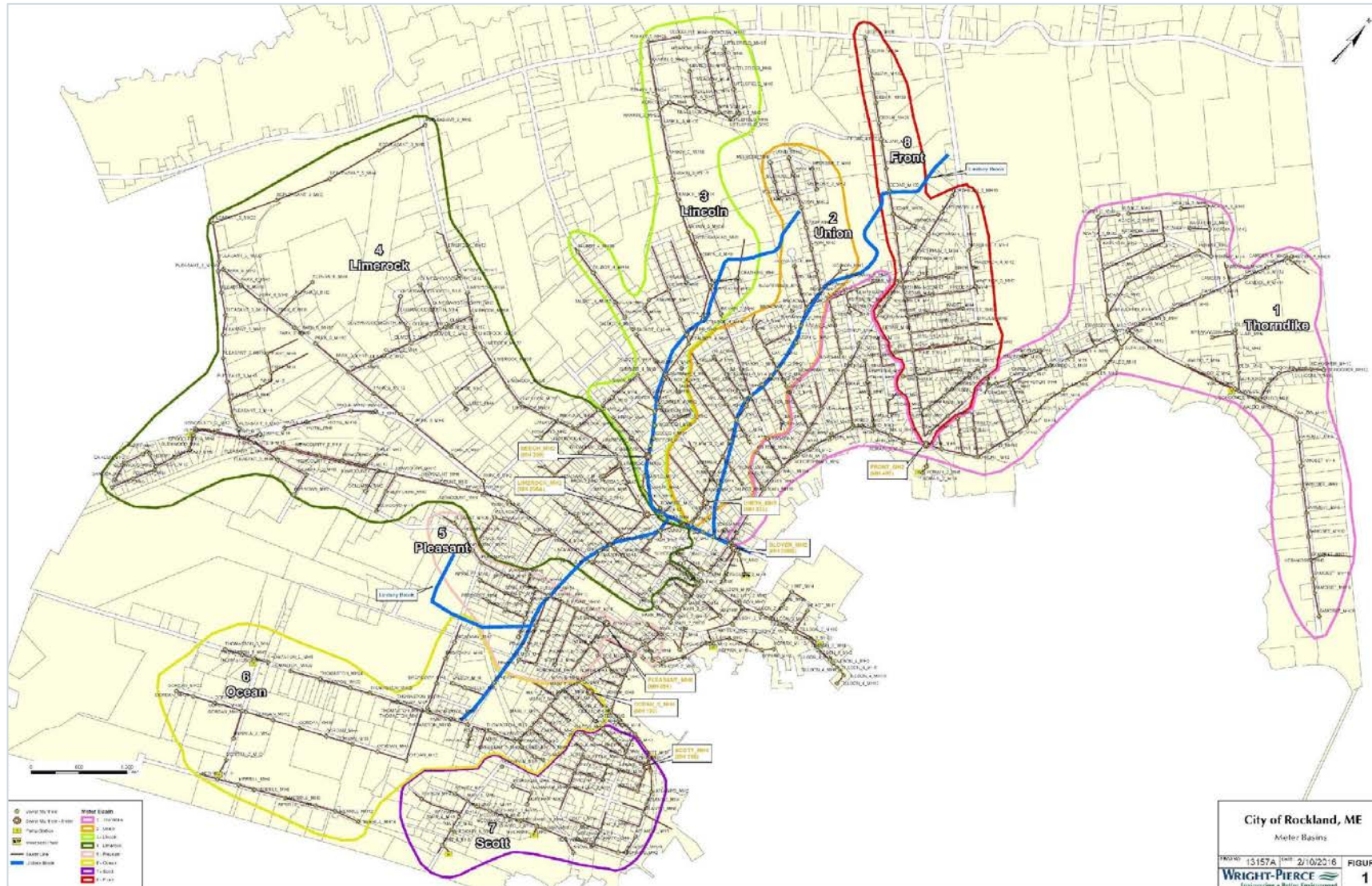
- Farnsworth Art Museum
- Maine Lobster Festival
- North Atlantic Blues Festival



The City owns and operates sewer collection system and a Water Pollution Control Facility

- **Sewer collection system**
 - Over 35 miles of 8 to 30-inch diameter pipe
 - Dating back to the early 1900's and prior when there were direct discharges
- **Water Pollution Control Facility (WPCF)**
 - WPCF and interceptors installed in the 1970's
 - Connected many of the older vitrified clay sewers to the WPCF
 - Flows range from less than 1 MGD to over 30 MGD during peak wet weather periods

City of Rockland – Meter Basins



City of Rockland



City has been diligent

- Sewer Pipe and manholes inspections (NASSCO PACP and MACP standards)
- Collection system separation and rehabilitation to address infiltration and inflow
- WPCF upgrades

City of Rockland



Common practice across the country

- In late 1800's to mid-1900's
- Prior to established sewer ordinances
- To connect the next new house to the closest sewer pipe, which in many cases was a neighbor's sewer lateral
- The City of Rockland is no different than other communities with multiple users sharing a single lateral



Multiple users sharing a single lateral

- Increased tension between neighbors
- Unsuspecting home buyers
- Occurring blockages or sewer back-ups

Shared sewer laterals can be found in various configurations

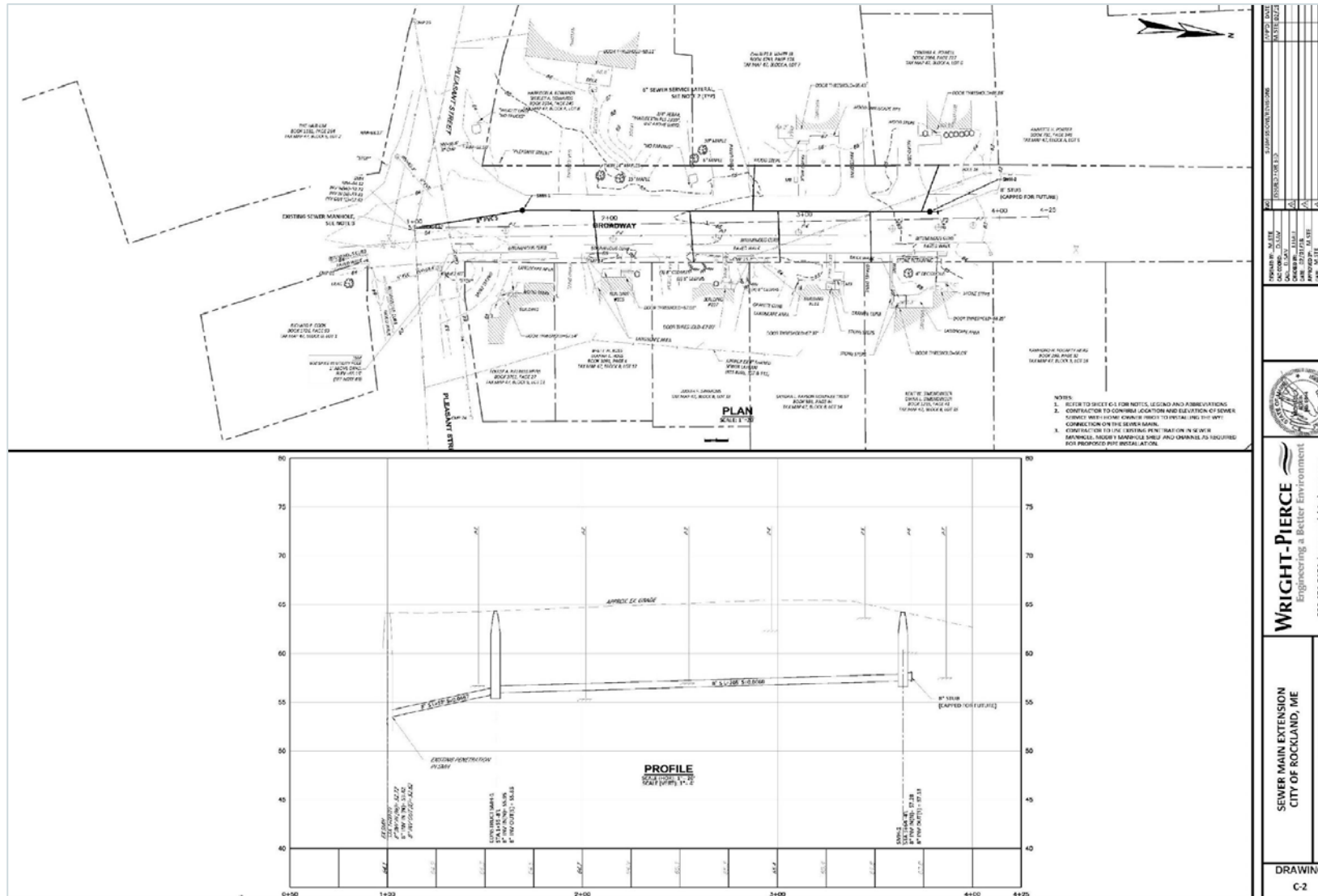
- Behind homes in backyards
- While others are connected inside through a pipe in the cellar floor allowing sewerage to flow from one house through the next house and on to yet another house

City of Rockland

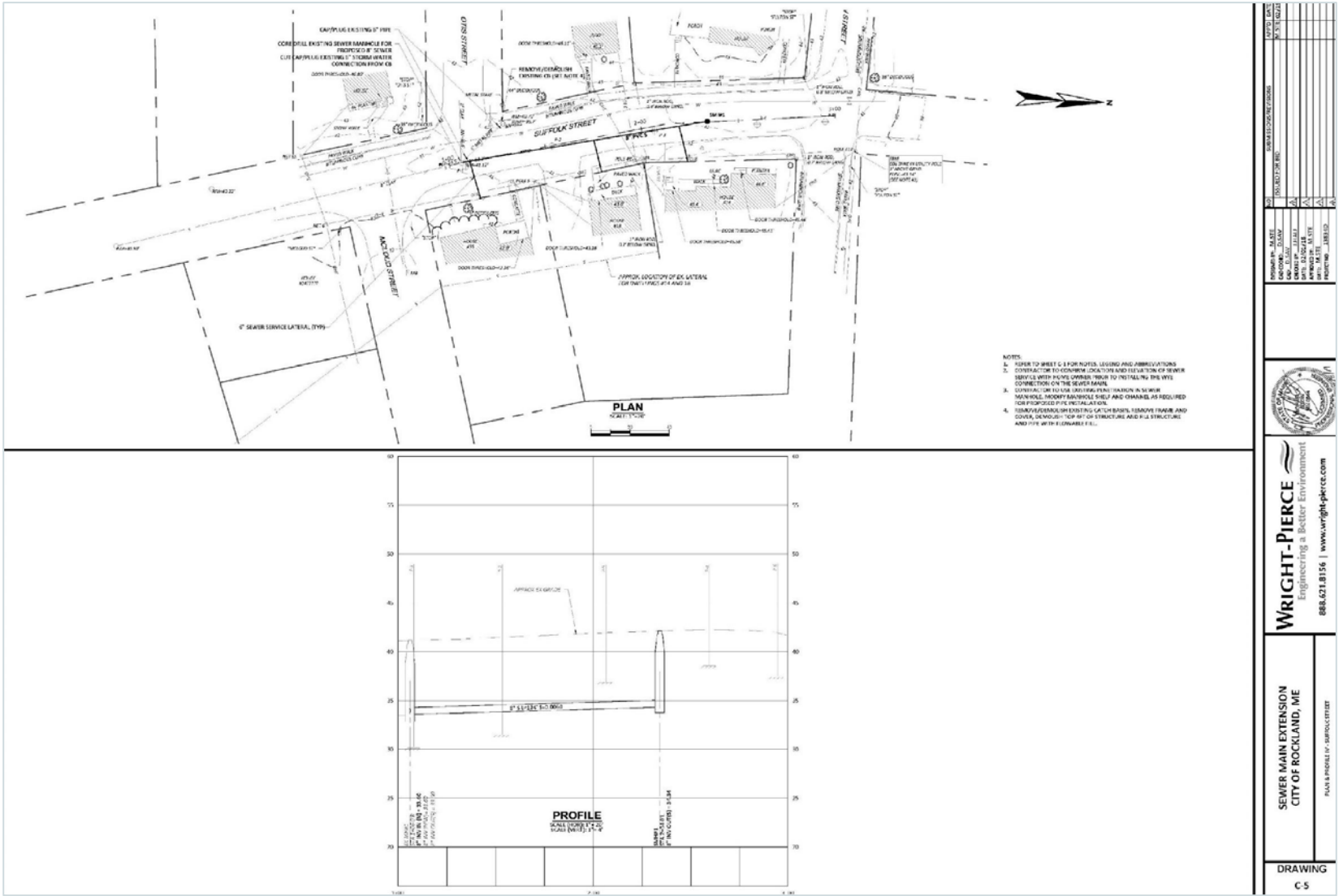


- For many reasons, this is not an ideal situation
- **Solution:** provide each house with its own lateral connection

City of Rockland – Broadway Plan



City of Rockland – Suffolk Plan





How?

- **Implemented sewer extension program**
 - Assist homeowners with proper separation of shared sewer laterals
 - New sewers are extended from an adjacent street to in front of houses with shared laterals
 - Secured funding from the USDA Rural Development for the separation work within right-of-way



CONTACT INFORMATION

Michael Stein

THANK YOU

michael.stein@wright-pierce.com

207.632.1266