



ASSET MANAGEMENT THE VERMONT APPROACH

<http://dec.vermont.gov/water/drinking-water/capacity-dev>

DRINKING WATER AND GROUNDWATER PROTECTION DIVISION



There are 417 community water systems in Vermont:

- 302 systems serve 500 or fewer;
- 83 systems serve 501-3,300;
- 25 systems serve 3,301-10,000; and
- 7 systems serve greater than 10,000.

ASSET MANAGEMENT TRAININGS



Drinking Water Asset Management Grant 2017



Drinking Water Asset Management Grant 2016



ASSET MANAGEMENT PLANNING LOANS

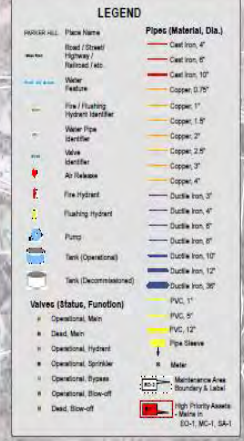
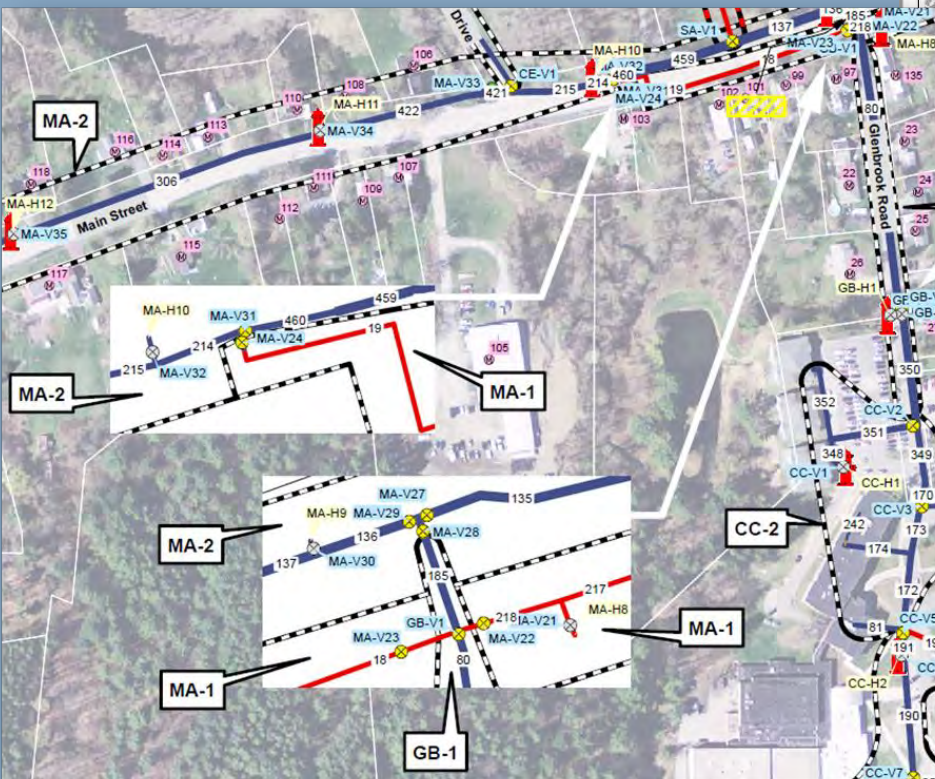
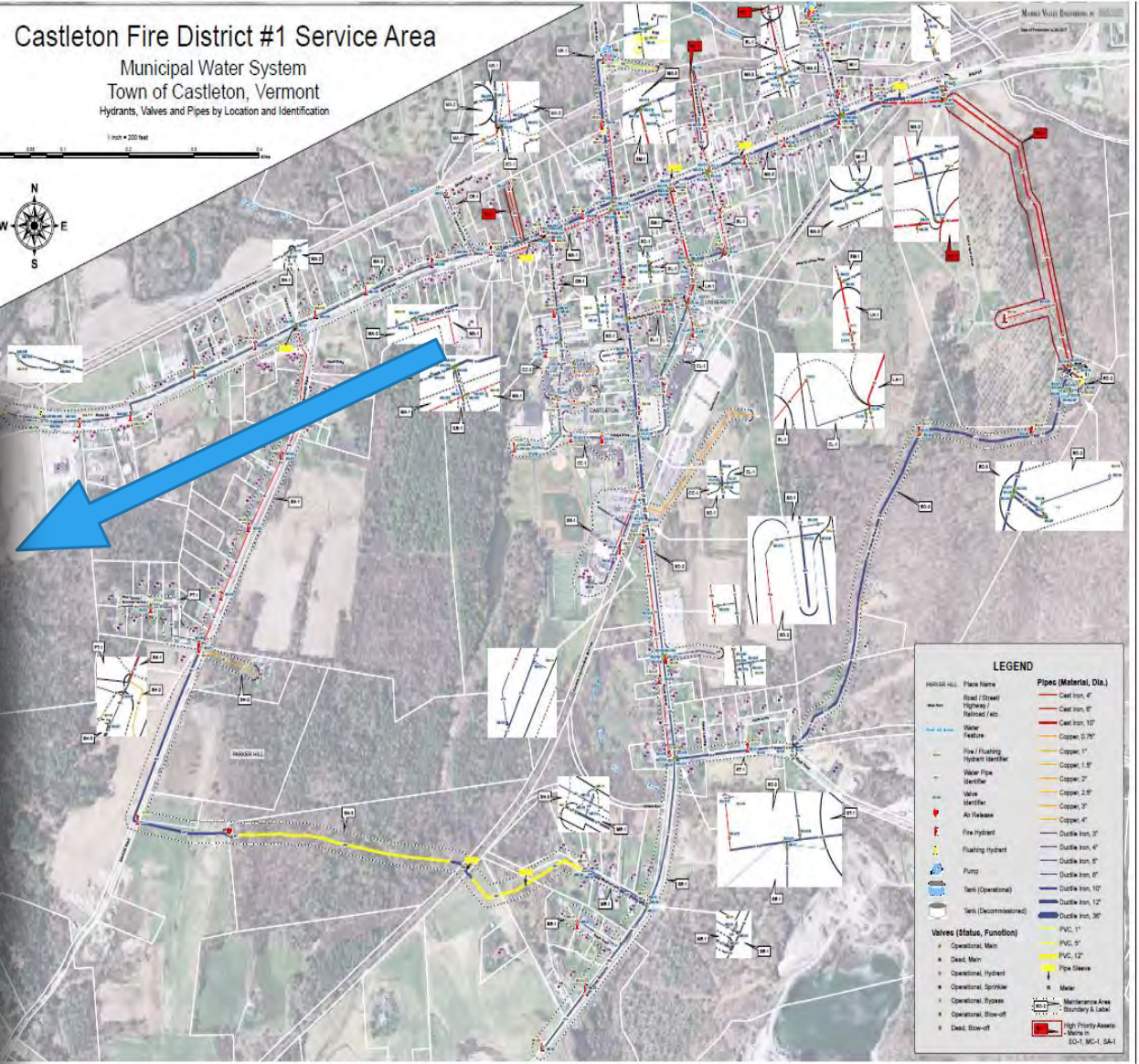
0.25MG Reservoir Assets

GlobalID	Asset	Make	Model	Serial Num	Install Date	Condition	Category	Type	Capacity	Useful Life	Rem Life	Rep Year	Rep Cost	Condition	POF	COF	Redundancy	Risk	Elevation	Photo
10017041-000-400-000-0000-0000	Vault				2000	good	Water	Valve Vault		30	14	2019	\$0,000	3	3	3	3	3	3	
10017042-000-400-000-0000-0000	Altitude Valve	Ross	SAWR	L 02186	2003	good	Water	Altitude valve		25	14	2019	\$0,000	3	3	3	3	3		
10017043-000-400-000-0000-0000	Check Valve	AFC		0000072	2003	fair	Water	Flow Check valve		15	14	2019	\$0,000	3	3	3	3	3		
10017044-000-400-000-0000-0000	Valve Vault				2003	3	Water	Valve Vault	0.25 MG	30	14	2019	\$0,000	3	3	3	3	3		
10017045-000-400-000-0000-0000	0.25MG Reservoir				1993	3	Water	Reservoir		75	14	2019	\$0,000	3	3	3	3	3	1002.02	
10017046-000-400-000-0000-0000	Wooden Shed				1993	3	Water	Reservoir Shed		50	14	1993	\$1,500	2.5	3	2	1	1	1	
10017047-000-400-000-0000-0000	Wooden Shed				1993	3	Water	Reservoir Shed		50	14	1993	\$1,500	2.5	3	2	1	1	1	
10017048-000-400-000-0000-0000	0.25MG Reservoir				1993	3	Water	Reservoir	0.25 MG	75	14	2019	\$0,000	3	3	3	3	3	1002.04	

Castleton Fire District #1 Service Area

Municipal Water System
Town of Castleton, Vermont
Hydrants, Valves and Pipes by Location and Identification

1 inch = 200 feet



LEAK DETECTION



Water main break in Montpelier, VT (August 2011)



VALVE EXERCISING



RATES TRAINING & DASHBOARD



Bill Comparison

Water Bill at 5,000 gallons
Median: \$34.88

Min \$10.69 Max \$106.90

Conservation Signal

Water Price / 1,000 gallons, after 10,000 gallons
Median: \$5.00

Min \$0.00 Max \$20.00

Cost Recovery

Operating Ratio Incl. Deprec. 2017

0.94

Median Affordability

Annual Water Bills as % MHI

0.55%

Copyright (c) 2020 Environmental Finance Center at the University of North Carolina, Chapel Hill.

QUESTIONS?

Megan Young, Capacity Program Supervisor,
802-585-4903 megan.young@vermont.gov

Joshua Lochhead, Capacity Program Specialist,
802-622-4831 Joshua.Lochhead@Vermont.gov

VT Drinking Water Capacity Development Program:
<http://dec.vermont.gov/water/drinkingwater/capacity-dev>