



Connecticut Department of Energy and Environmental Protection



Connecticut's CLEAN WATER FUND

January 29, 2020

George Hicks

NEWEA 2020 – Boston, MA



Connecticut Department of Energy and Environmental Protection

Connecticut



Connecticut Department of Energy and Environmental Protection

Municipal Wastewater Unit

- Staff – 13
- Issue NPDES Permits
- Inspections (WPCFs & Collection Systems)
- Enforcement
- General Permits (Nitrogen, FOG)
- Nitrogen Credit Exchange
- Bypass Reporting (SSO, CSO)
- Wastewater Operator Certification
- Clean Water Fund (planning, design, construction & financing)



Eligible CWF Applicants

- City or Town
- Regional Wastewater Authorities
- Municipal Districts
 - Water or Fire or Sewer Districts
- Several Beach Associations with taxing powers
- To qualify for funding:
 - Authority to levy & collect taxes
 - Authority to impose fees to fund wastewater operations



How do you get funded?

- High Number of Priority Points on Construction Projects
- Reserves



Priority Point System

- Largest number of points
 - Attainment of State Water Quality Goals
 - Removal of CSOs, Nitrogen, Phosphorus
- Lower number of points
 - Enhancement of fisheries, shell fishing, swimming
 - Eliminates failing septic systems, sewage back ups



Reserves

- First come, first served
- Funding not based upon priority points
- With few exceptions, funds available to most towns



Examples of Reserves

- Engineering studies (Planning)
- Design
- Small Community Projects
- Collection System Improvements
- Green Infrastructure



Program Funding

Type of Project	Grant Percentage
• Planning Study	55%
• Combined Sewer Overflow Control	50%
• Treatment Plant Upgrade (nutrient removal)	30%
• Treatment Plant Upgrade	20%
• Small Community Project	25%
• Collection System Improvements	0%

Loans at 2% interest rate for 20 years for all except Planning.



Planning (55% grant, no loan)

Town Wide Wastewater Management Plans

Treatment Plant Process Upgrades

Combined Sewer Overflow Long Term Control Plans

Community Pollution from Septic Systems

Infiltration & Inflow Removal

Pump Station Evaluations



Design

- Must be reachable on the Priority List within 3 years
- Need local funding authorization for design and construction costs
- Grant % based upon project type



Construction Projects

Combined Sewer Overflow Control (50% grant)

Sewer Separation

CSO storage

CSO conveyance for treatment

Pump Station Upgrade

Increased Pipe Capacity

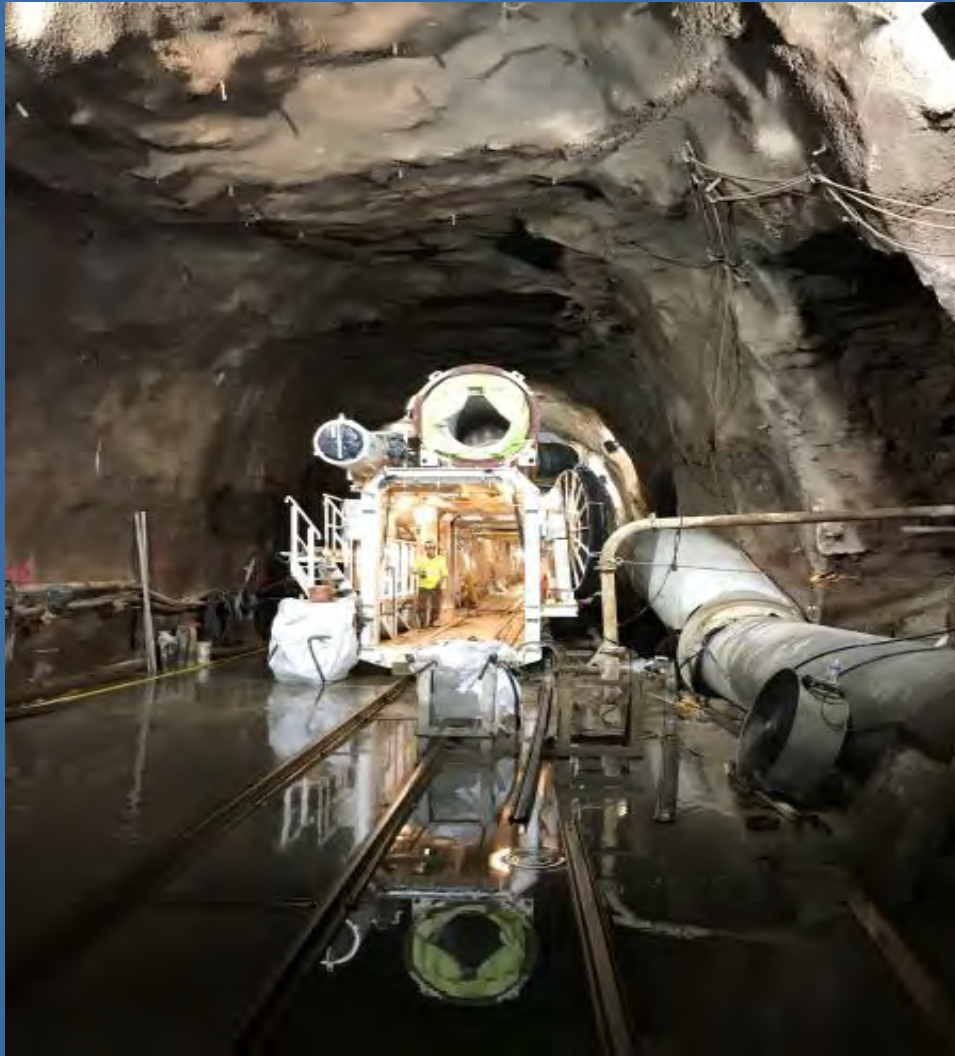
Wet Weather Treatment

CSO Regulator Modifications

Green Infrastructure



MDC's CSO Control Project



Connecticut Department of Energy and Environmental Protection

Construction Projects

Treatment Plant Upgrades

Nutrient Removal (N or P @ 30% grant)

General upgrade (20% grant)

Electrical Energy Generation

Flood Protection

Process Improvements



Construction Projects

Small Community Projects (25% grant)

Treatment plant upgrades

Sewer Extensions

Decentralized Wastewater Management
(Septic System Upgrades)



Construction Projects

Collection System Improvements (2% loan)

Pipe lining

Pump station upgrades

Pipe replacement

Relief sewers



Collection System Problems



Connecticut Department of Energy and Environmental Protection

Collection System Problems



Collection System Problems



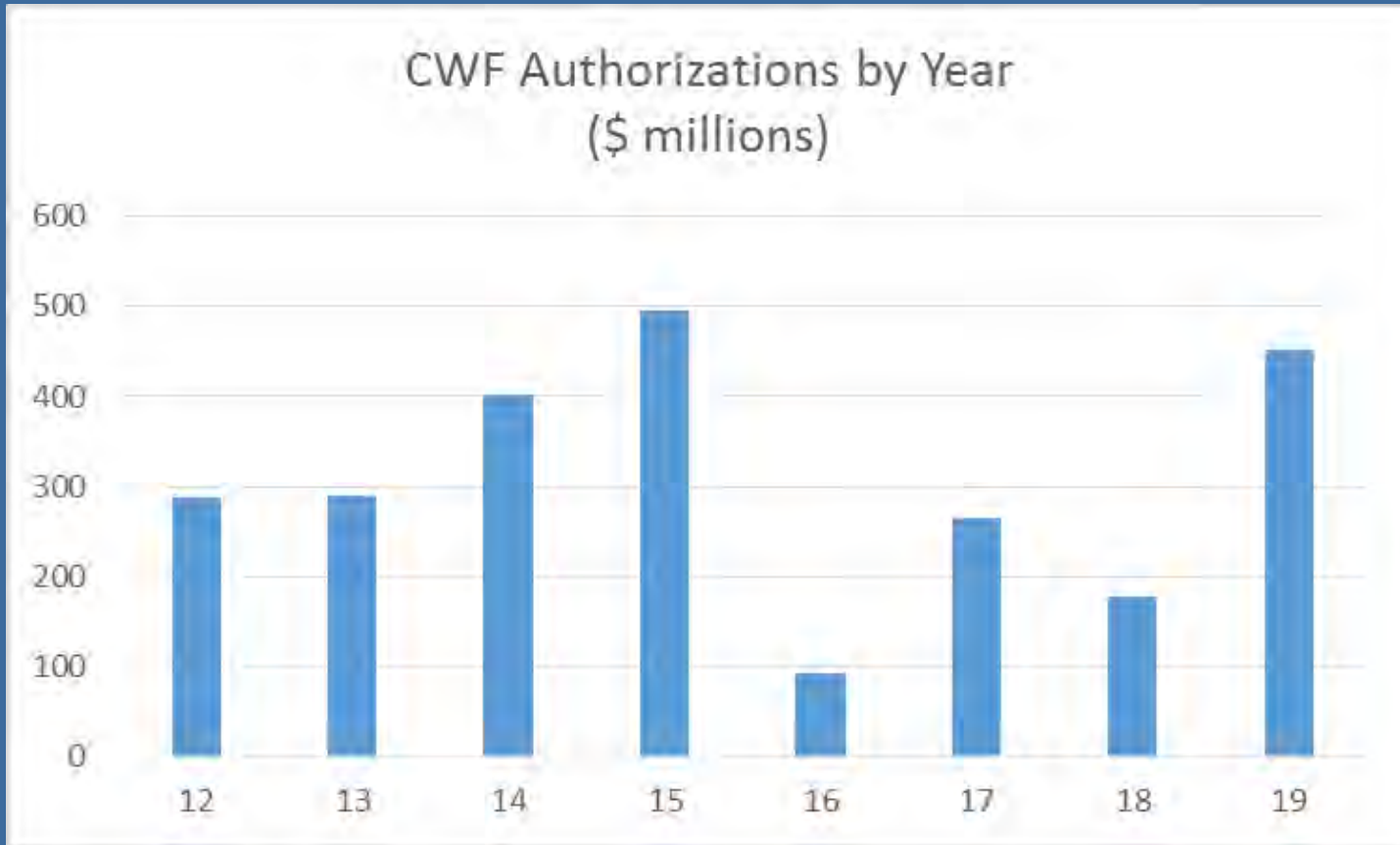
Connecticut Department of Energy and Environmental Protection

Getting the money

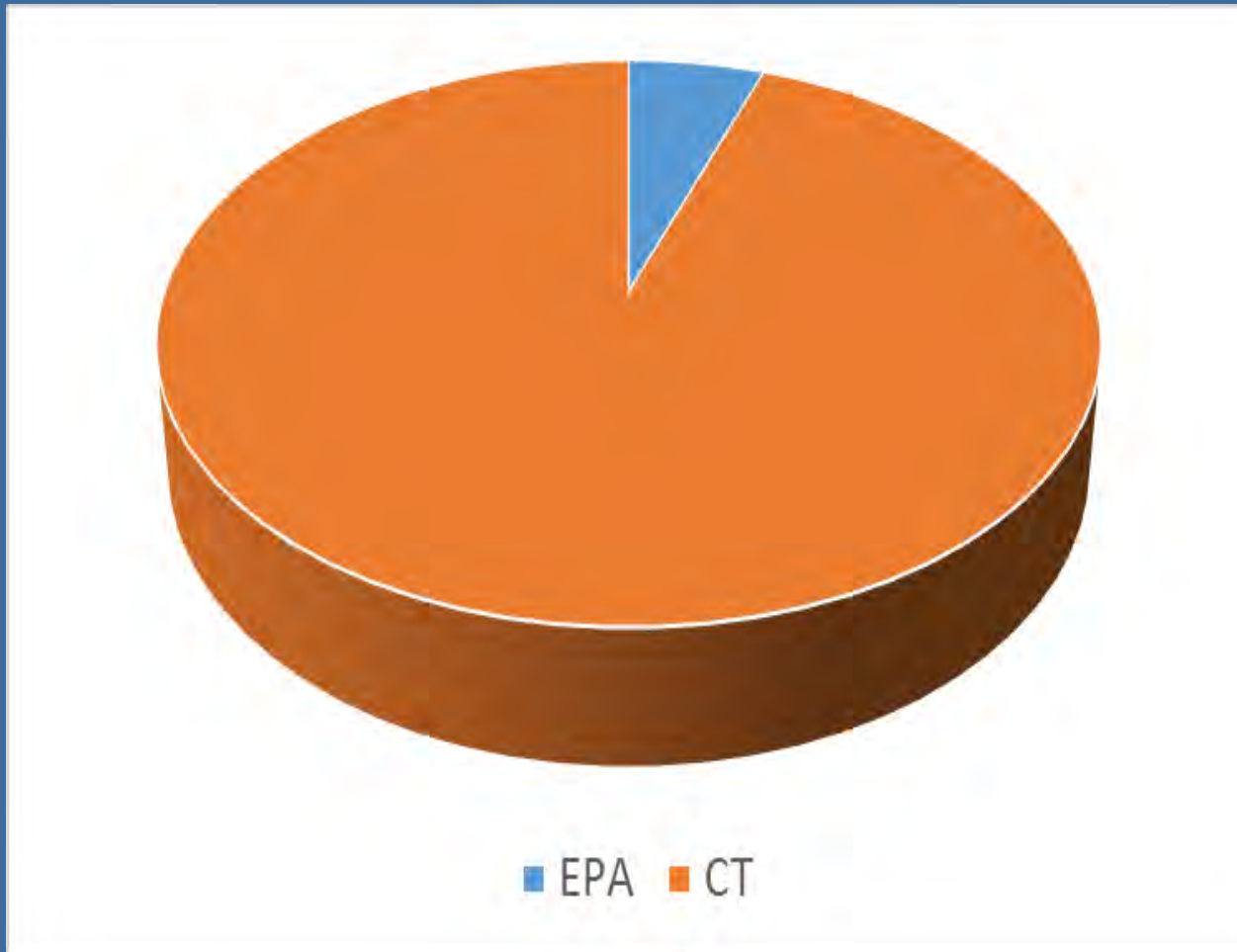
- File CWF Application
- Close Funding Agreement
- Process Pay Requests
- Permanent Loan Obligation
 - Repayment over 20 years @ 2% interest



Recent Funding (2012-2019)



Source of Funds



Clean Water Investment Coalition

- Construction Industry
- Professional Organizations
- Municipal Organizations
- Environmental Advocates



Construction Industry

- CT Construction Industries Association
- CT Environmental and Utilities Contractors Assoc.
- International Union of Operating Engineers Local 478
- Utility Contractors Association of CT
- CT Laborers District Council
- CT State Building Trades Council



Professional Organizations

- New England Water Environment Association
- American Council of Engineering Companies of CT
- CT Commercial Lobsterman's Association
- Southern New England Fishermen and Lobstermen Association
- CT Marine Trades Association
- CT Water Works Association



Municipal Organizations

- CT Association of Water Pollution Control Authorities
- CT Water Pollution Abatement Association
- CT Council of Small Towns
- CT Conference of Municipalities



Environmental Advocates

- Save the Sound
- CT Fund for the Environment
- Audubon CT
- CT Audubon Society
- CT River Watershed Council
- Environment CT
- Rivers Alliance of CT
- The Nature Conservancy
- The Sierra Club
- CT River Conservancy



DEEP Website

Link to Municipal Wastewater page

https://www.ct.gov/deep/cwp/view.asp?a=2719&q=325580&deepNav_GID=1654

Link to Clean Water Fund page

https://www.ct.gov/deep/cwp/view.asp?a=2719&q=325576&deepNav_GID=1654

Or search “CT DEEP Municipal Wastewater”

For updated information, subscribe to the Municipal Wastewater Listserv



Questions?

George V. Hicks, P.E.
Supervising Sanitary Engineer
george.hicks@ct.gov
860-424-3752

