

CITY OF FITCHBURG

East Wastewater Treatment Facility

Virtual Tour

Presenters:

Jeffrey Murawski, PE
Deputy Commissioner of Wastewater

Nicholas Erickson, PE
Civil Engineer



Liquid Treatment







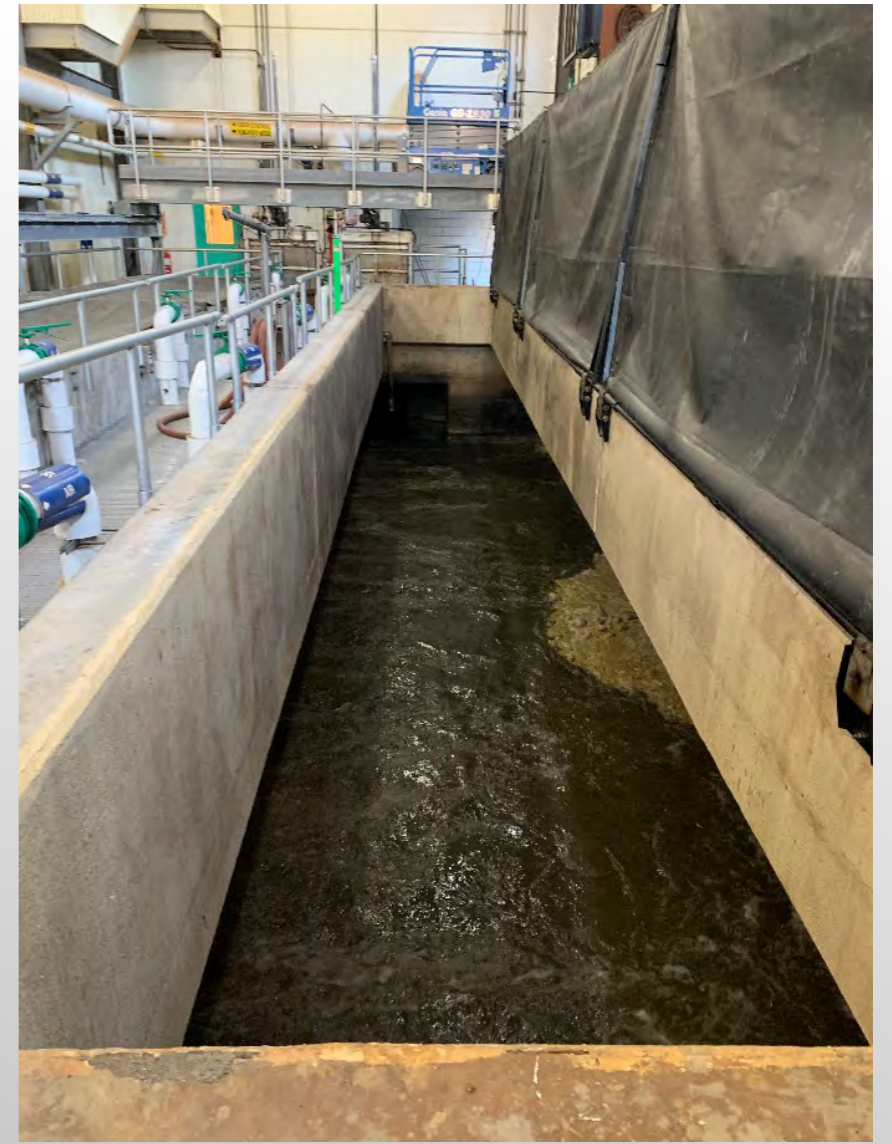
Sampling shed/influent from the collection system





Septage disposal station





Aerated grit chambers

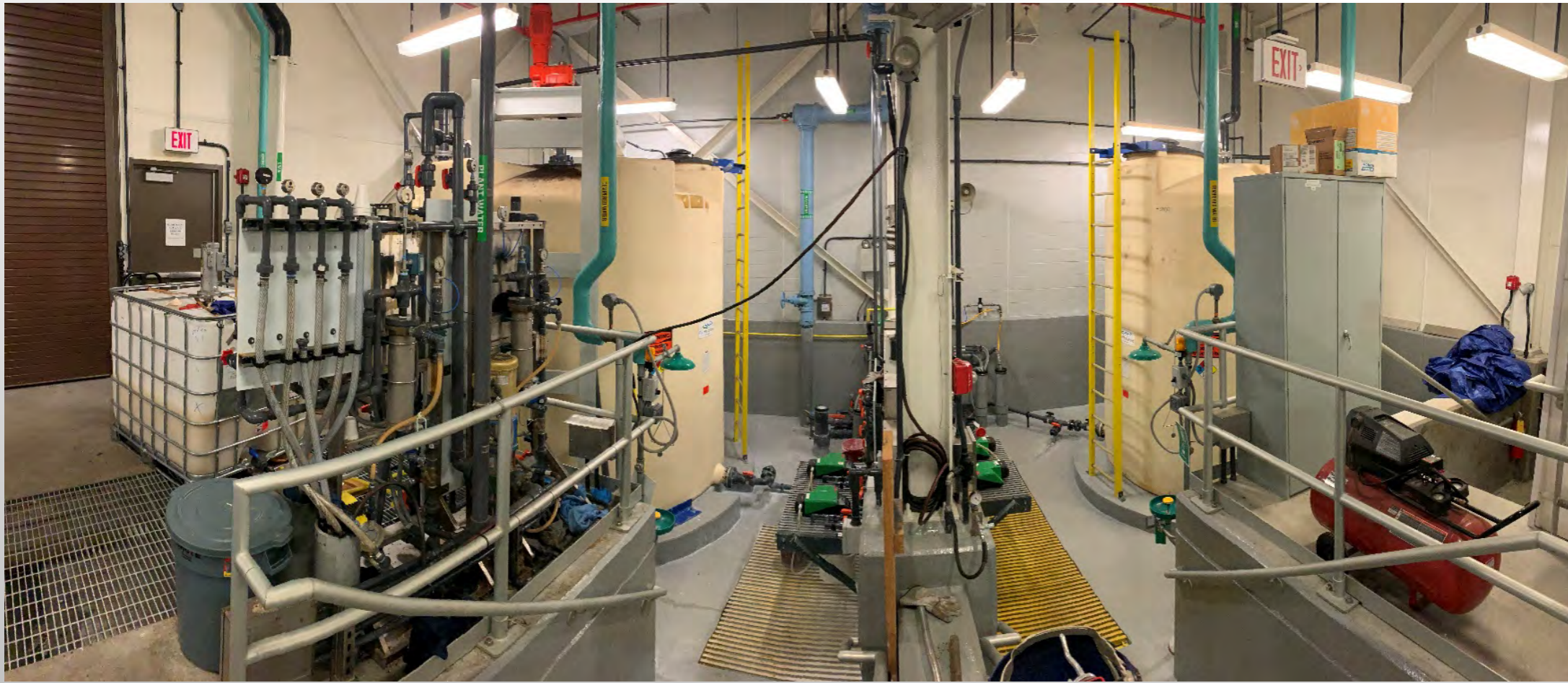
Clamshell bucket
for cleaning





Mechanical bar screens, screenings washer, and compactor presses





Chemical Enhanced Primary Treatment (CEPT) Room





Odor control room



Sodium hypochlorite
and sodium hydroxide
dosing pumps





Primary settling tanks (#1-3)



View into tank





Primary effluent flow meter
(note 40 MGD max.)



Main flow
distribution structure





1ST STAGE
AERATION TANK
NO. 1

Secondary treatment, 1st stage aeration tanks

1ST STAGE
AERATION TANK
NO. 2



Anaerobic
biological selector
zones w/ tank
baffles and mixers





Secondary treatment, 1st stage clarifiers



Effluent weir from secondary clarifiers





Secondary treatment, 2nd stage aeration tanks



Anaerobic biological selector zones w/ tank baffles and mixers



Secondary treatment,
2nd stage clarifier
(1 of 2 shown)



Clarence the
2nd Stage
Clarifier Duck





Chlorine contact tanks and chlorine building



Effluent to outfall



Dechlorination channel





Primary pump gallery access building



Primary sludge pumps

Primary pumps
to gravity
thickeners





Positive displacement blowers



Centrifugal blowers





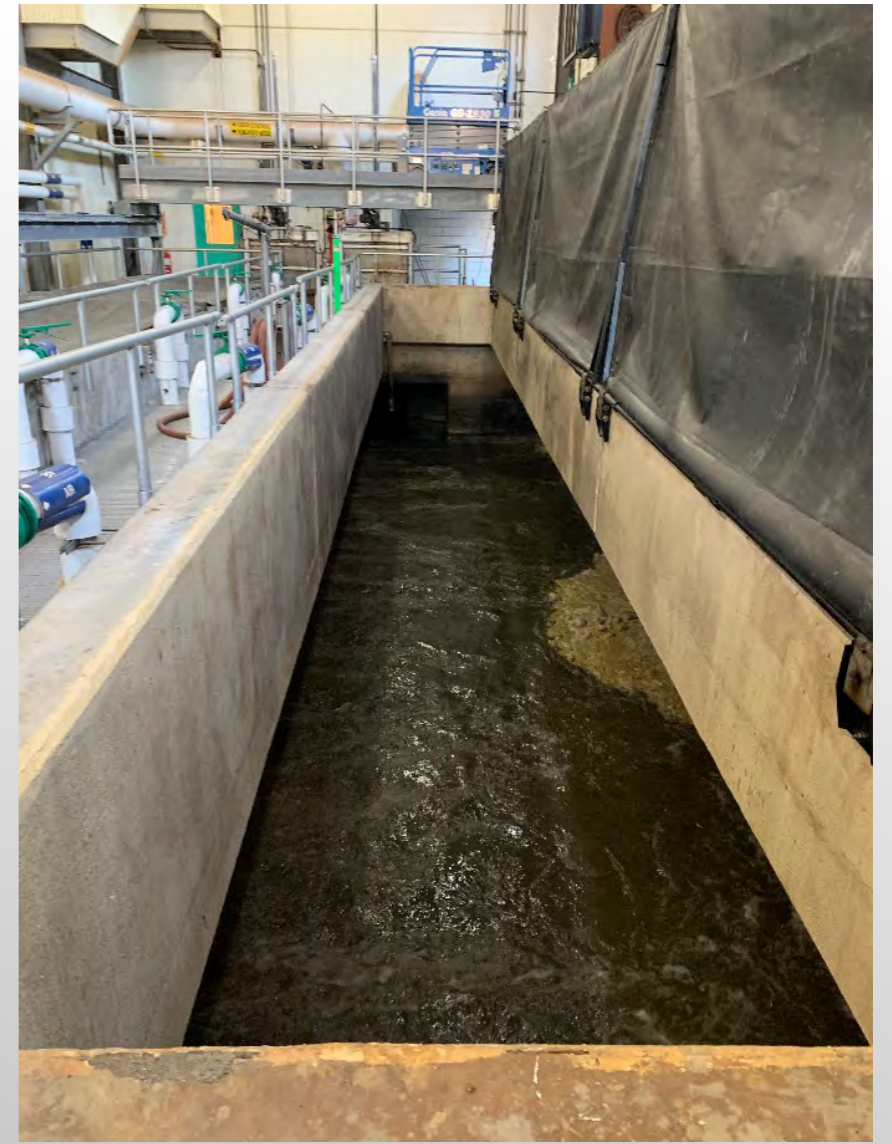
Backup generators



Solids Handling







Aerated grit chambers

Clamshell bucket
for cleaning





Mechanical bar screens, screenings washer, and compactor presses





Secondary sludge pumps and piping





Gravity belt thickeners



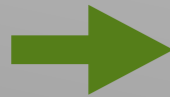


Polymer totes



Sludge holding tank
(1 of 2)

Gravity
thickeners
(1 of 2)





Sludge blend tank



Greening of the workspace





Fournier presses



Auger from Fournier presses to hopper



Hopper into dumpster





Sludge incinerator
(inactive)





Questions?

Special thanks to:

Mark McNamara
WWTF Superintendent

Anthony Maressa, PE
Sewer System Manager

