



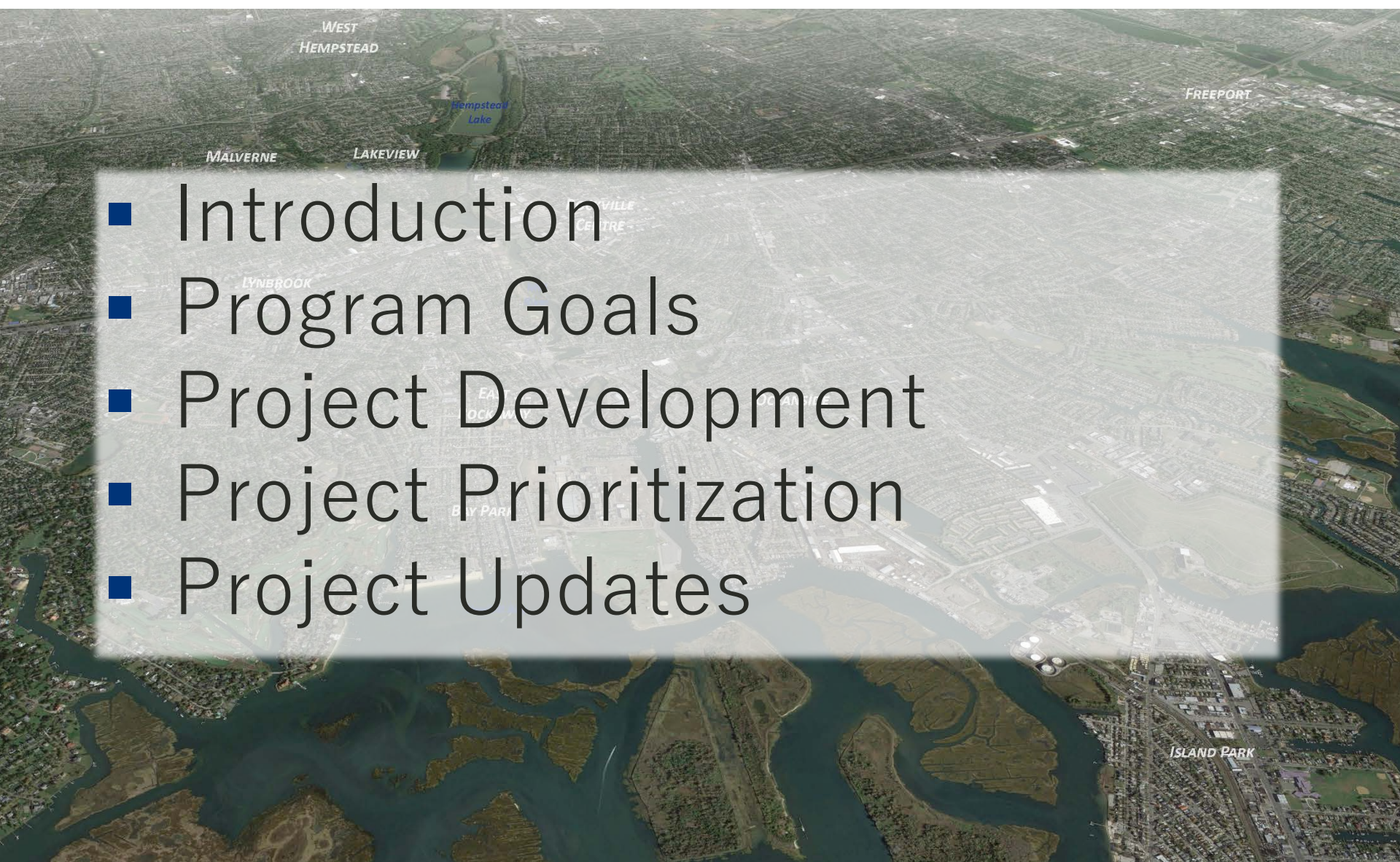
LIVING WITH THE BAY RESILIENCY STRATEGY



THE PLAN, THE PROJECTS, THE PROGRAM

Jake Oldenburger, PE, CFM, ENV SP, LEED GA
Jason Hellendrung, ASLA, PLA

AGENDA

- 
- Introduction
 - Program Goals
 - Project Development
 - Project Prioritization
 - Project Updates

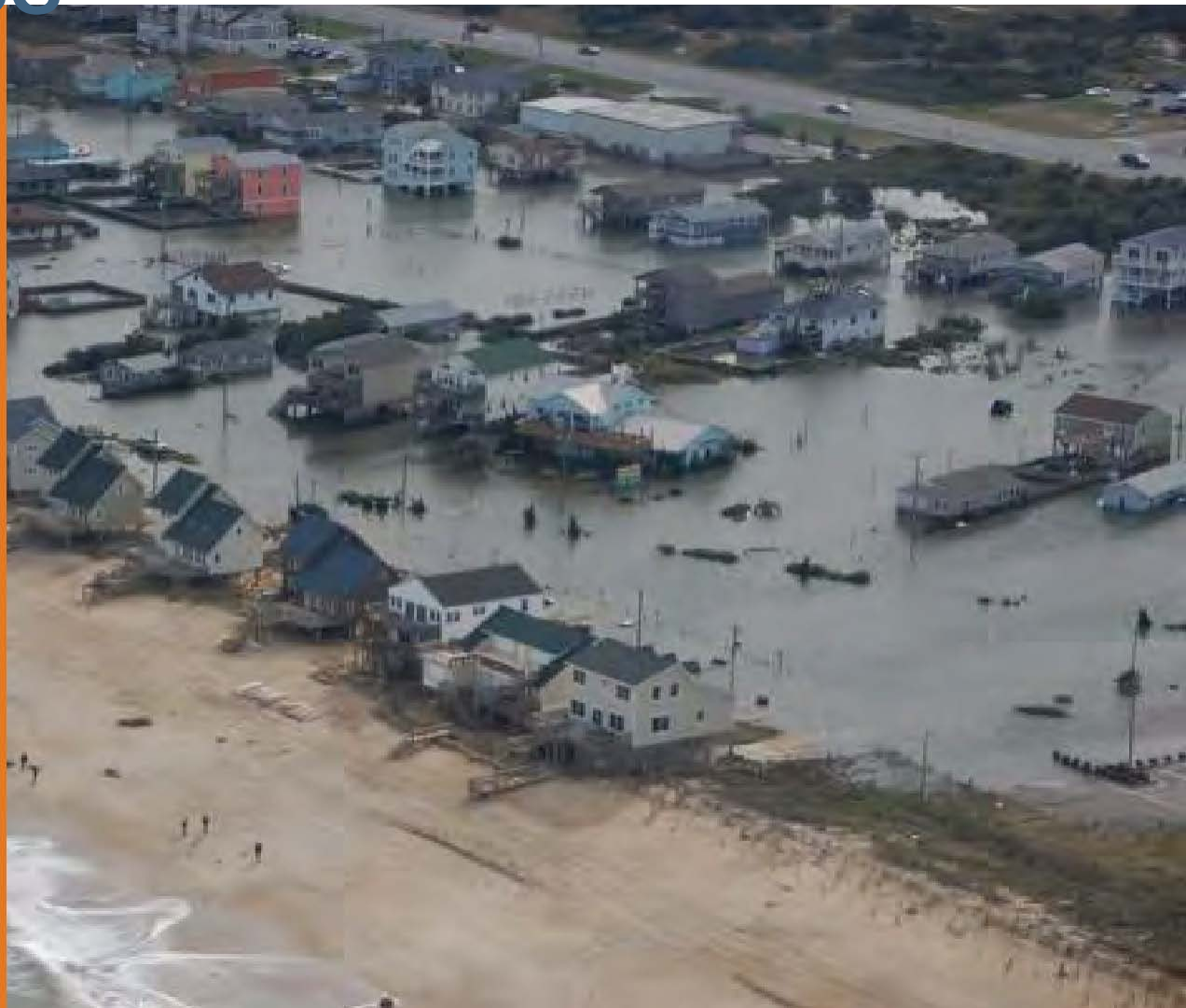
REBUILD BY DESIGN PROCESS

After Sandy: What We Know

**Our communities remain
vulnerable**

**The risks from climate change will
persist and grow**

**We cannot simply rebuild what was
there before; we have to rebuild
better**

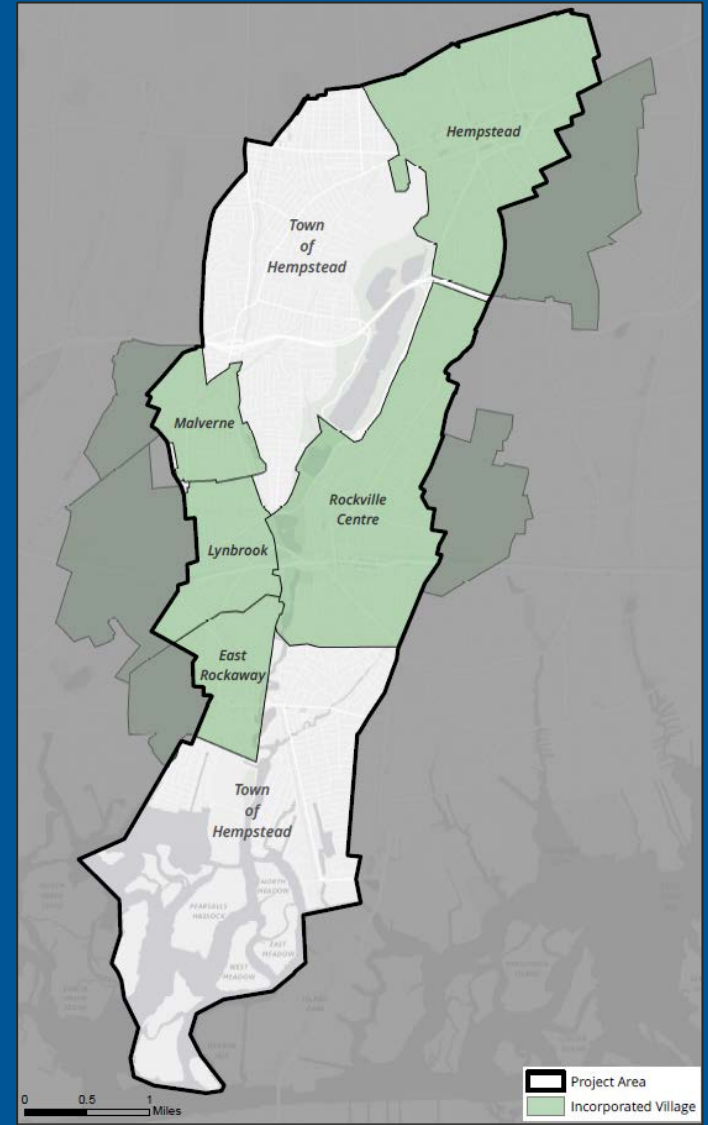
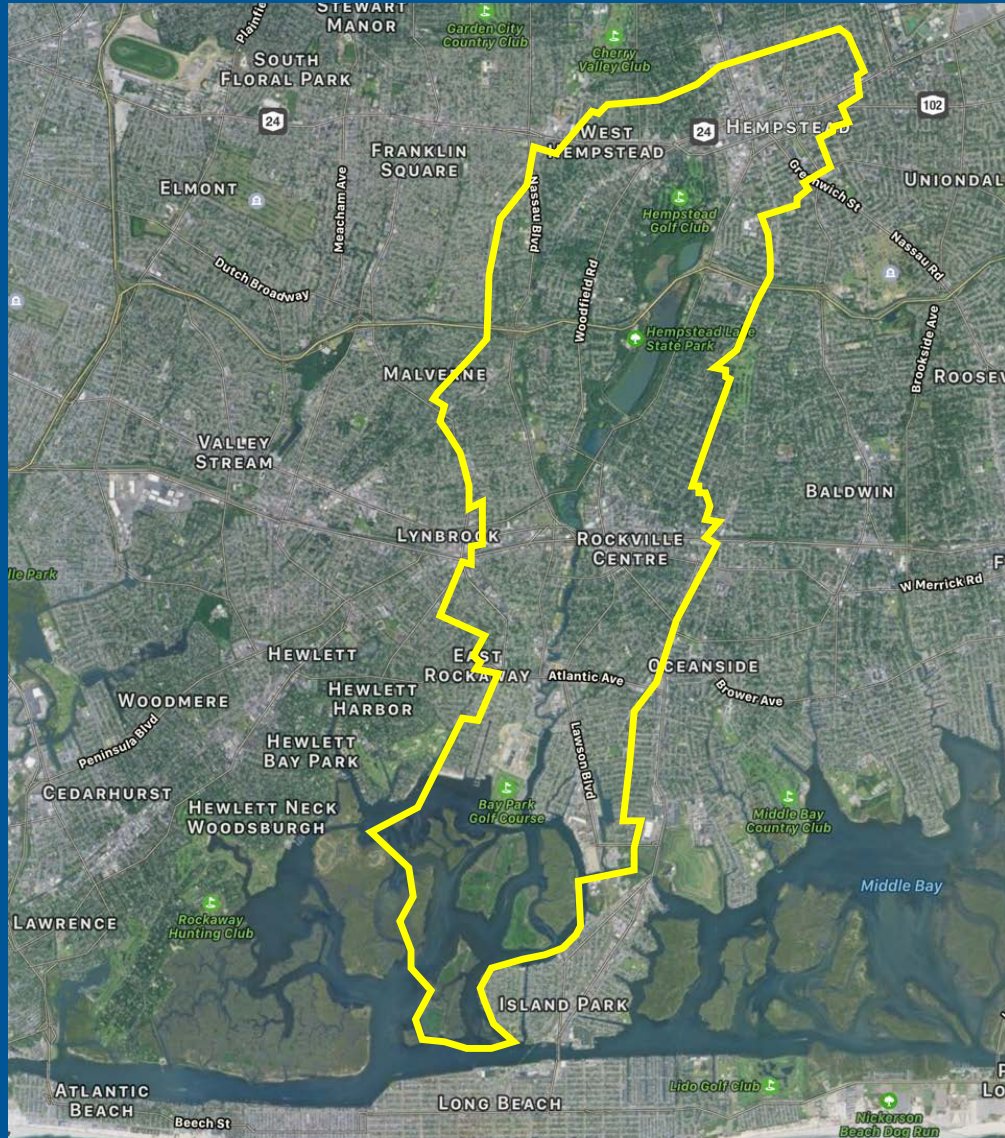


LIVING WITH THE BAY LOCATION (LWTB)

The LWTB program is located in southwest Nassau County on the south side of Long Island

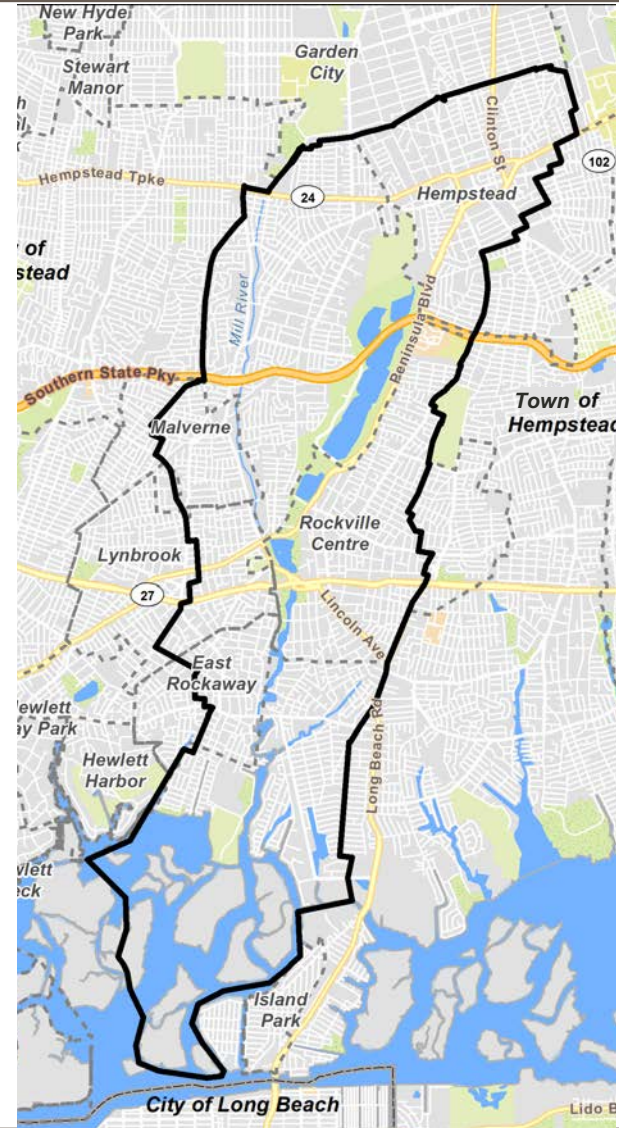


LWTB PROGRAM AREA



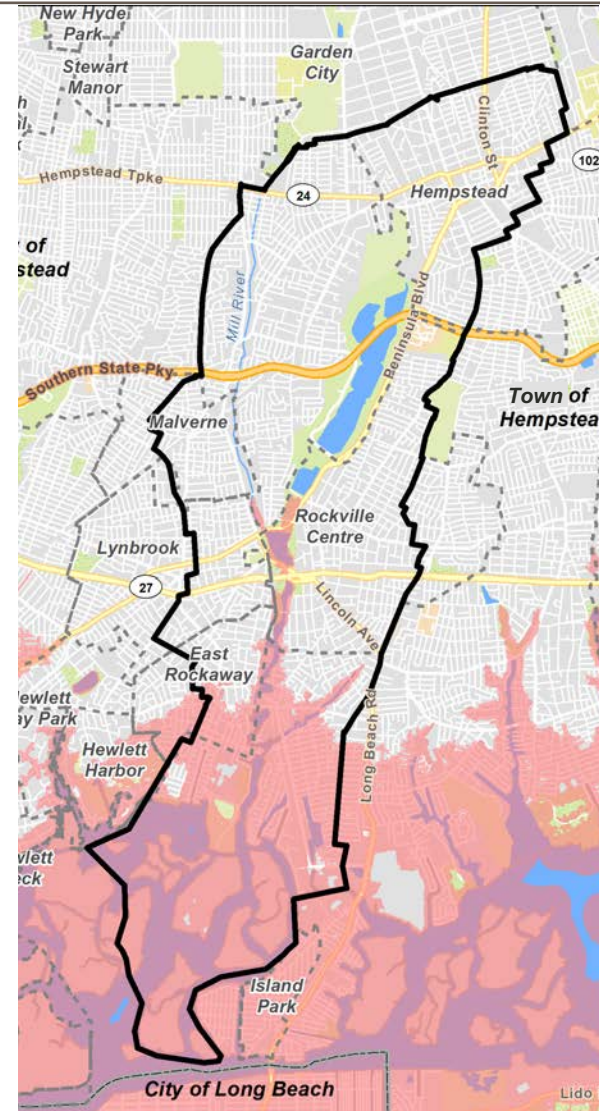
LWTB PROGRAM AREA

- 10,000 Acres
- 28,400 Parcels



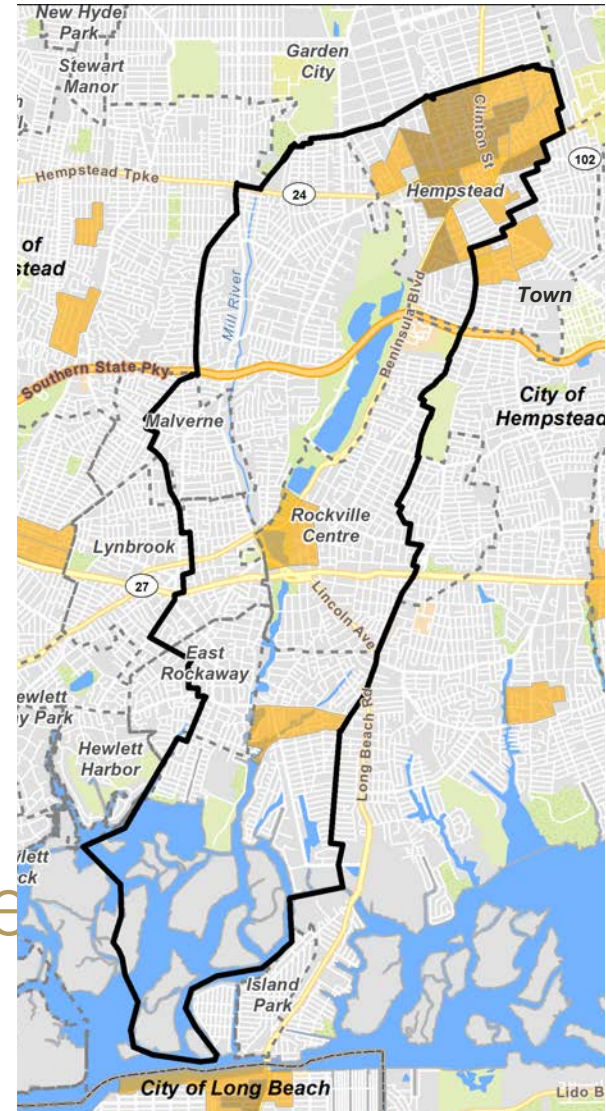
LWTB PROGRAM AREA

- 10,000 Acres
- 28,400 Parcels
- Sandy Impact:
 - 2,500 Acres
 - 4,100 Parcels (80% Residential)

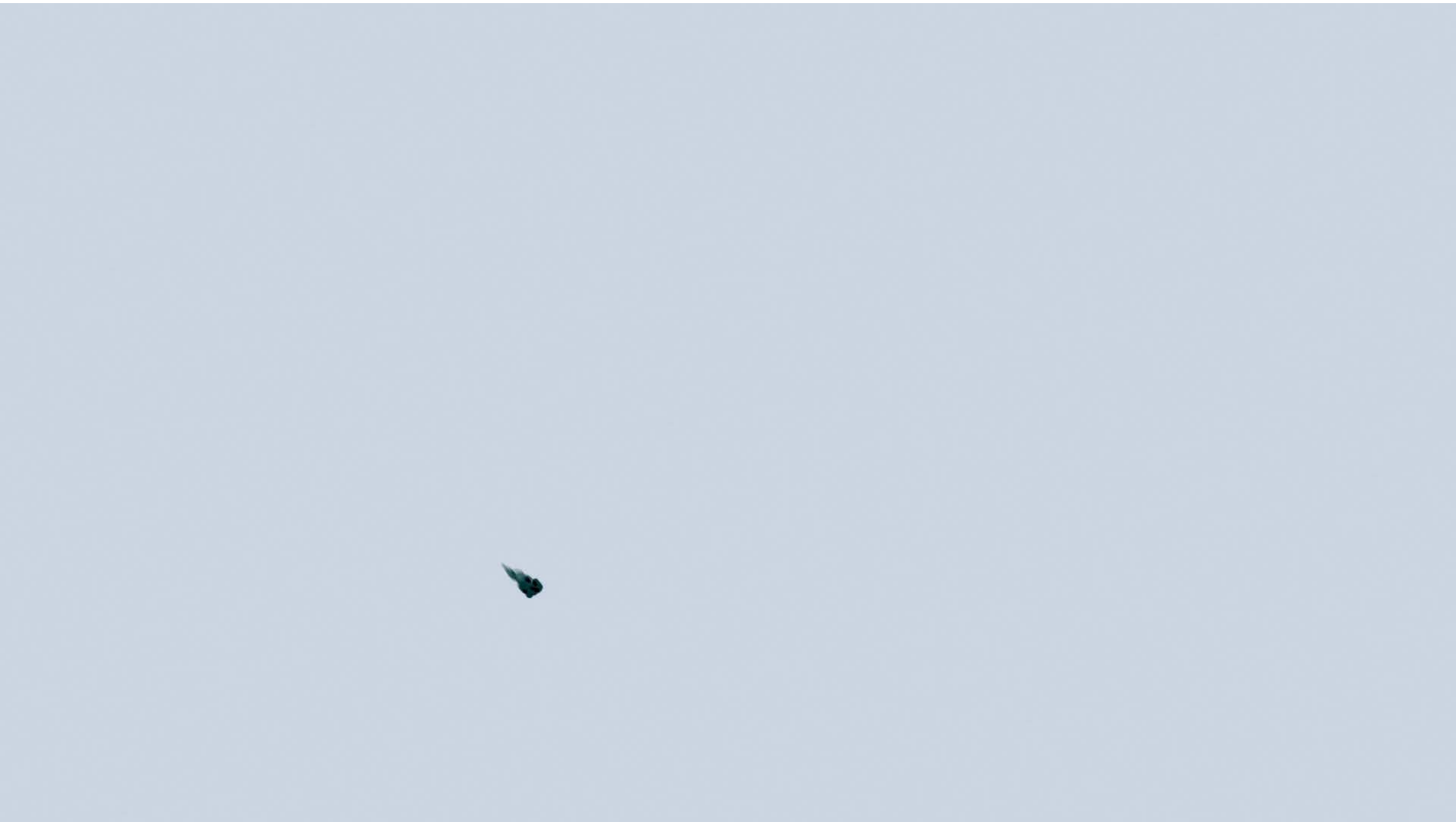


LWTB PROGRAM AREA

- 10,000 Acres
- 28,400 Parcels
- Sandy Impact:
 - 2,500 Acres
 - 4,100 Parcels (80% Residential)
- Low-Moderate Income Areas



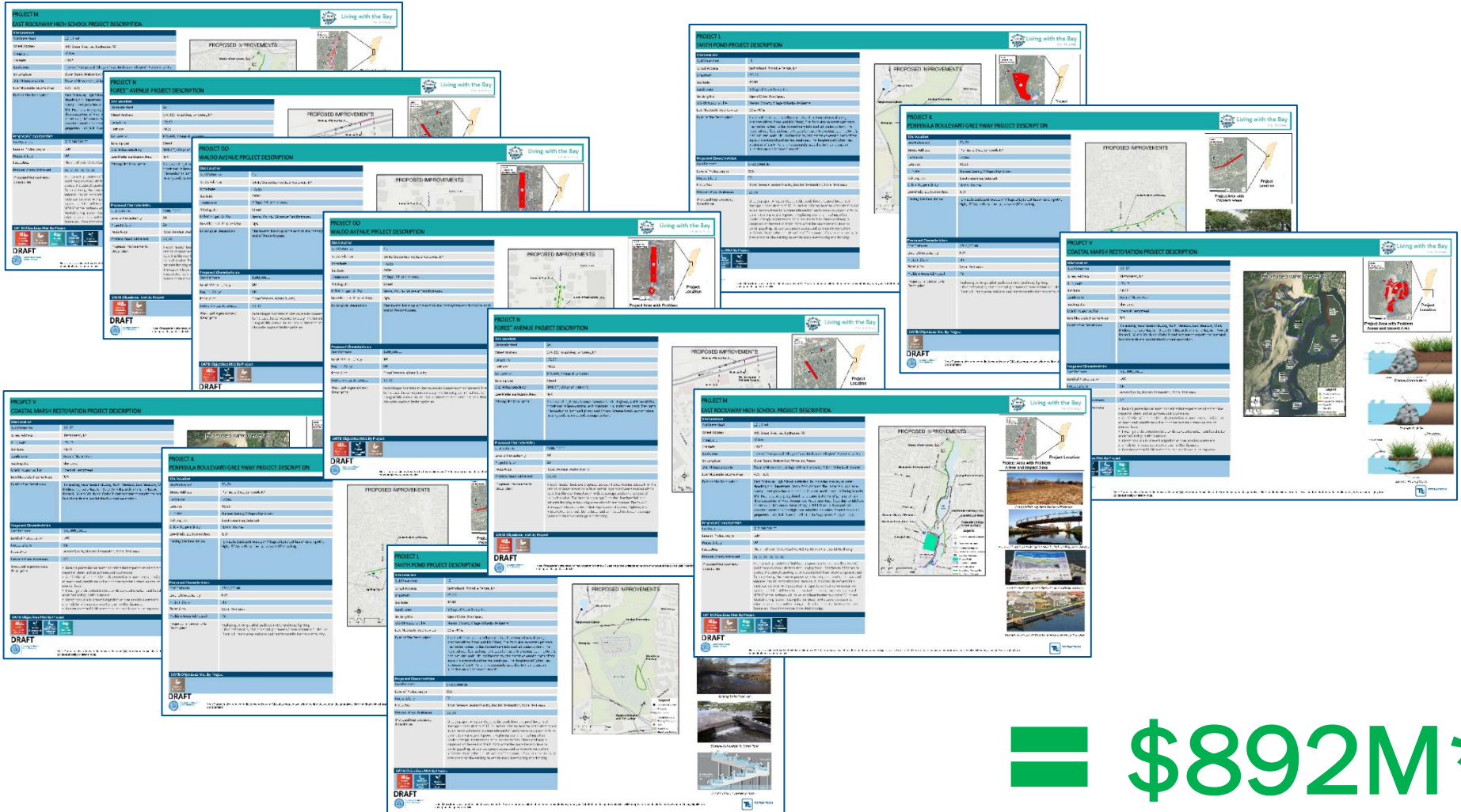
LIVING WITH THE BAY



LWTB TYPES OF PROBLEMS



TOTAL PROJECT COSTS



= \$892M*

Program = \$125M

*\$723M identified for 1 of the 36 projects

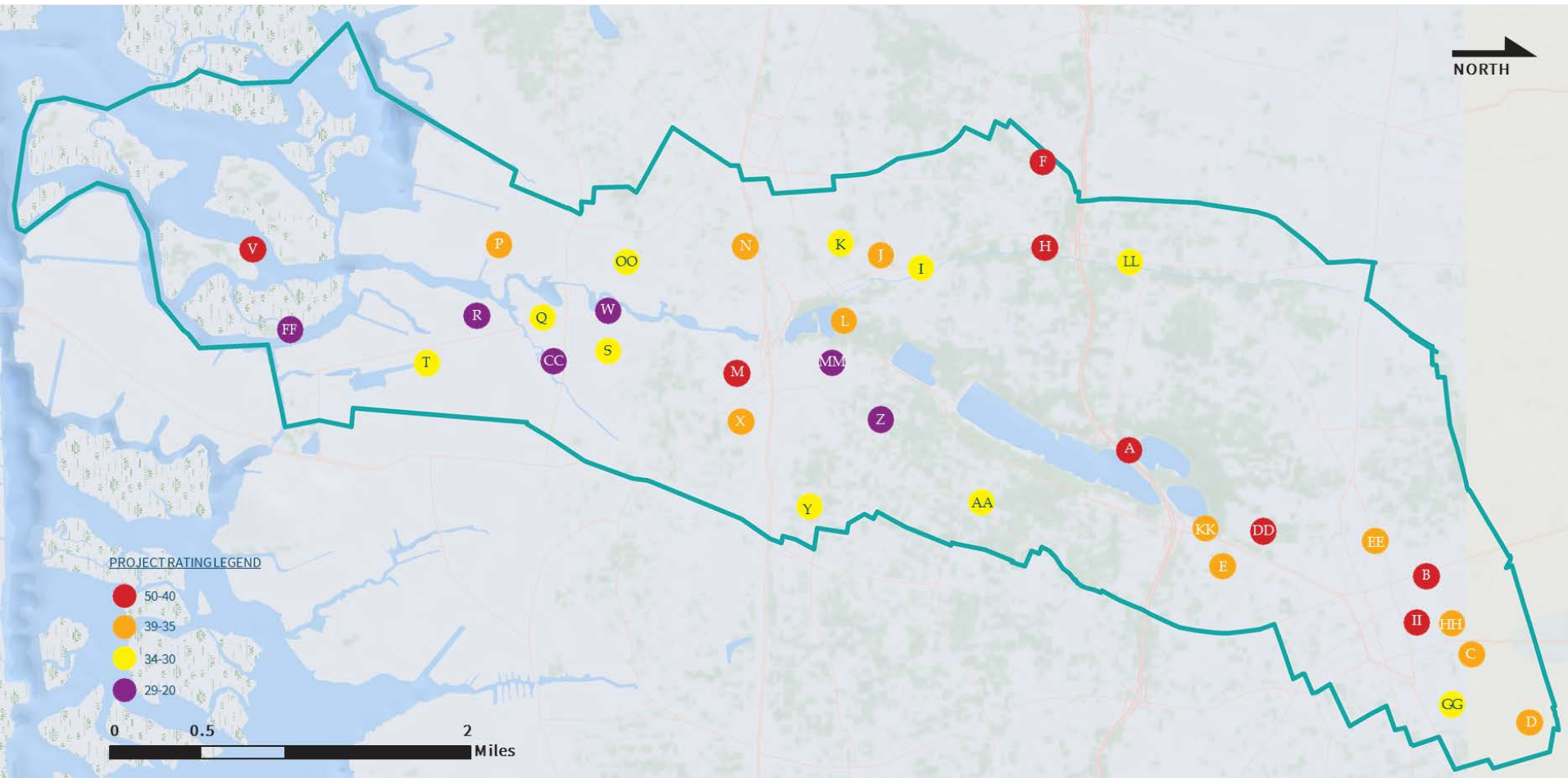
PRIORITIZATION RANKING

PRIORITIZATION RANKING BREAKDOWN							
ID	PROJECTNAME	Costs	Benefits	Risk & Vulnerability	Synergies	Social Resilient	Total Project Rating
V	Coastal Marsh Restoration	0.0	32.4	8.2	3.3	6.6	50.5
B	Horsebrook Drain West Branch Recharge Basin	7.0	25.3	11.4	1.9	0.8	46.4
DD	Hempstead High School Creek Restoration	23.9	7.4	2.2	5.7	5.8	45.0
II	Cooper Square	19.8	14.7	2.3	6.1	0.0	42.9
M	East Rockaway High School/Lister Park	10.3	13.8	6.0	4.9	7.8	42.8
H	Malverne High School	18.0	11.3	2.1	4.8	6.2	42.4
F	Malverne Green Streets	12.1	19.6	3.8	5.3	0.4	41.2
A	Hempstead Lake State Park	0.0	13.6	11.3	5.3	10.7	40.9
L	Smith Pond	12.8	9.1	4.7	5.7	7.4	39.7
C	Hempstead Housing Authority	20.0	8.2	7.2	3.6	0.2	39.2
N	Forest Avenue	22.5	4.9	4.8	6.1	0.4	38.7
P	East Boulevard and West Boulevard	18.8	6.2	6.3	5.4	2.0	38.7
E	Southwest Village of Hempstead Suspended Pavement Green Streets	5.0	22.1	6.1	5.3	0.0	38.5
X	S Centre Avenue Bioretention Green Street	24.5	1.6	2.7	6.1	3.5	38.4
EE	Covert Street	24.5	0.6	5.7	6.8	0.0	37.6
KK	Southern State Parkway Ramp	23.8	3.9	3.4	6.1	0.0	37.2
HH	Nichols Court	24.0	1.3	2.5	6.1	0.0	37.2
J	Lynbrook Recharge Basin	24.7	4.2	3.9	3.6	0.0	37.2
D	Northeast Village of Hempstead	4.1	21.9	6.8	2.5	0.0	35.3

PRIORITIZATION RANKING BREAKDOWN (CONTINUED)							
ID	PROJECTNAME	Costs	Benefits	Risk & Vulnerability	Synergies	Social Resilient	Total Project Rating
GG	Hendrickson Avenue	24.0	1.9	3.0	4.8	0.0	33.9
I	Lakeview Avenue	24.0	0.0	2.4	4.9	0.0	32.9
OO	Waldo Avenue	24.8	1.2	3.9	3.0	0.0	32.9
AA	Beverly Road	24.5	1.6	2.9	3.6	0.0	32.6
K	Peninsula Boulevard Greenway	24.3	0.0	2.4	4.3	0.0	32.6
Y	Maple Avenue and Long Beach Road Intersection	24.3	0.1	2.7	5.2	0.0	32.3
LL	Halls Pond Study	24.5	0.0	2.5	4.9	0.0	31.9
Q	Williamson Street	22.5	3.4	4.4	1.3	0.0	31.6
T	Lawson Boulevard	11.8	9.5	7.1	2.4	0.0	30.8
S	East Rockaway Long Island Railroad Station	23.5	1.2	1.7	3.6	0.0	30.4
R	Bay County Park	23.6	1.1	2.5	1.4	0.0	29.6
FF	Mill River Storm Surge Barrier	0.0	15.8	10.2	3.5	0.0	29.5
MM	Greenway	10.2	0.0	2.0	4.3	0.0	27.2
W	East Rockaway Downtown Study	24.5	0.0	0.0	0.0	0.0	24.5
Z	Lakeview Avenue and Hempstead Avenue Intersection	15.0	0.8	2.6	5.4	0.0	23.8
CC	Marina Pointe Marsh Restoration	11.4	4.6	2.1	2.5	0.0	22.4

The prioritization framework is intended to identify a collection of transformative projects that increase the resiliency of the Mill River corridor. Numerical scores for each metric category were developed (a detailed discussion on category weighting is included in Objective #6 document under separate cover) rather than tangible values such as dollars. Each of the categories was formed so that a higher score indicates a positive, preferred element of the project. No negative scores are included in the prioritization framework.

PRIORITIZATION RANKING



THE PROJECTS

PRIORITIZATION RANKING BREAKDOWN							
ID	PROJECTNAME	Costs	Benefits	Risk & Vulnerability	Synergies	Social Resilient	Total Project Rating
V	Coastal Marsh Restoration	0.0	32.4	8.2	3.3	6.6	50.5
B	Horsebrook Drain West Branch Recharge Basin	7.0	25.3	11.4	1.9	0.8	46.4
DD	Hempstead High School Creek Restoration	23.9	7.4	2.2	5.7	5.8	45.0
II	Cooper Square	19.8	14.7	2.3	6.1	0.0	42.9
M	East Rockaway High School/Lister Park	10.3	13.8	6.0	4.9	7.8	42.8
H	Malverne High School	18.0	11.3	2.1	4.8	6.2	42.4
F	Malverne Green Streets	12.1	19.6	3.8	5.3	0.4	41.2
A	Hempstead Lake State Park	0.0	13.6	11.3	5.3	10.7	40.9
L	Smith Pond	12.8	9.1	4.7	5.7	7.4	39.7
C	Hempstead Housing Authority	20.0	8.2	7.2	3.6	0.2	39.2
N	Forest Avenue	22.5	4.9	4.8	6.1	0.4	38.7
P	East Boulevard and West Boulevard	18.8	6.2	6.3	5.4	2.0	38.7
E	Southwest Village of Hempstead Suspended Pavement Green Streets	5.0	22.1	6.1	5.3	0.0	38.5
X	S Centre Avenue Bioretention Green Street	24.5	1.6	2.7	6.1	3.5	38.4
EE	Covert Street	24.5	0.6	5.7	6.8	0.0	37.6
KK	Southern State Parkway Ramp	23.8	3.9	3.4	6.1	0.0	37.2
HH	Nichols Court	24.0	1.3	2.5	6.1	0.0	37.2
J	Lynbrook Recharge Basin	24.7	4.2	3.9	3.6	0.0	37.2
D	Northeast Village of Hempstead	4.1	21.9	6.8	2.5	0.0	35.3

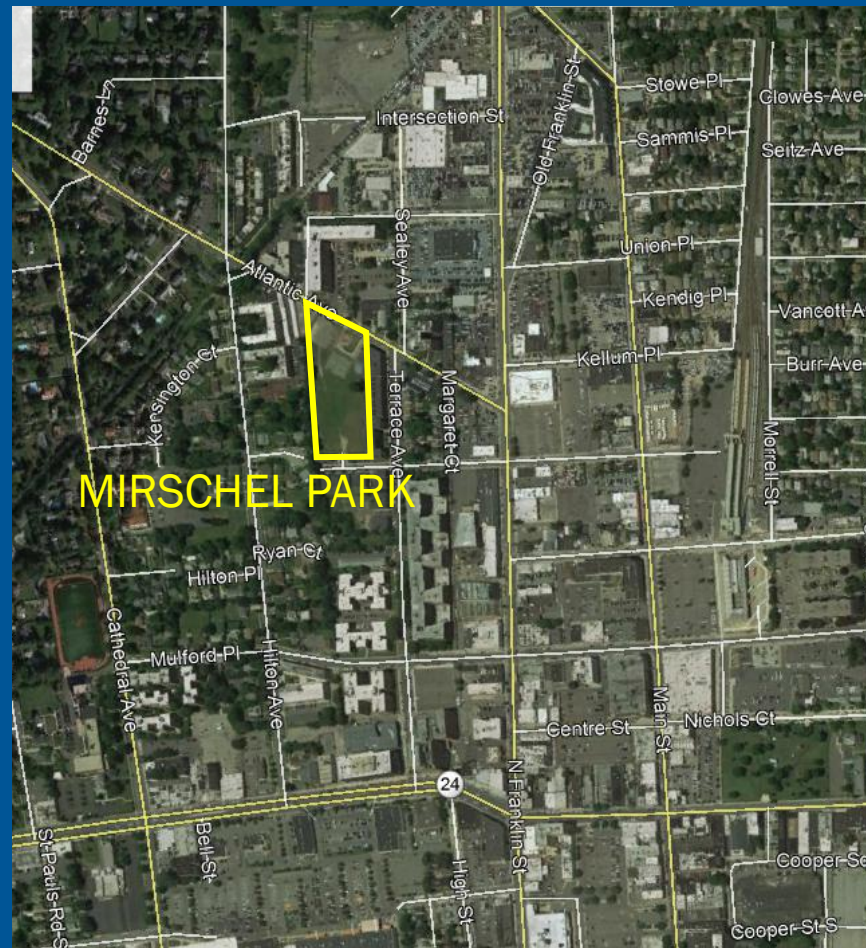
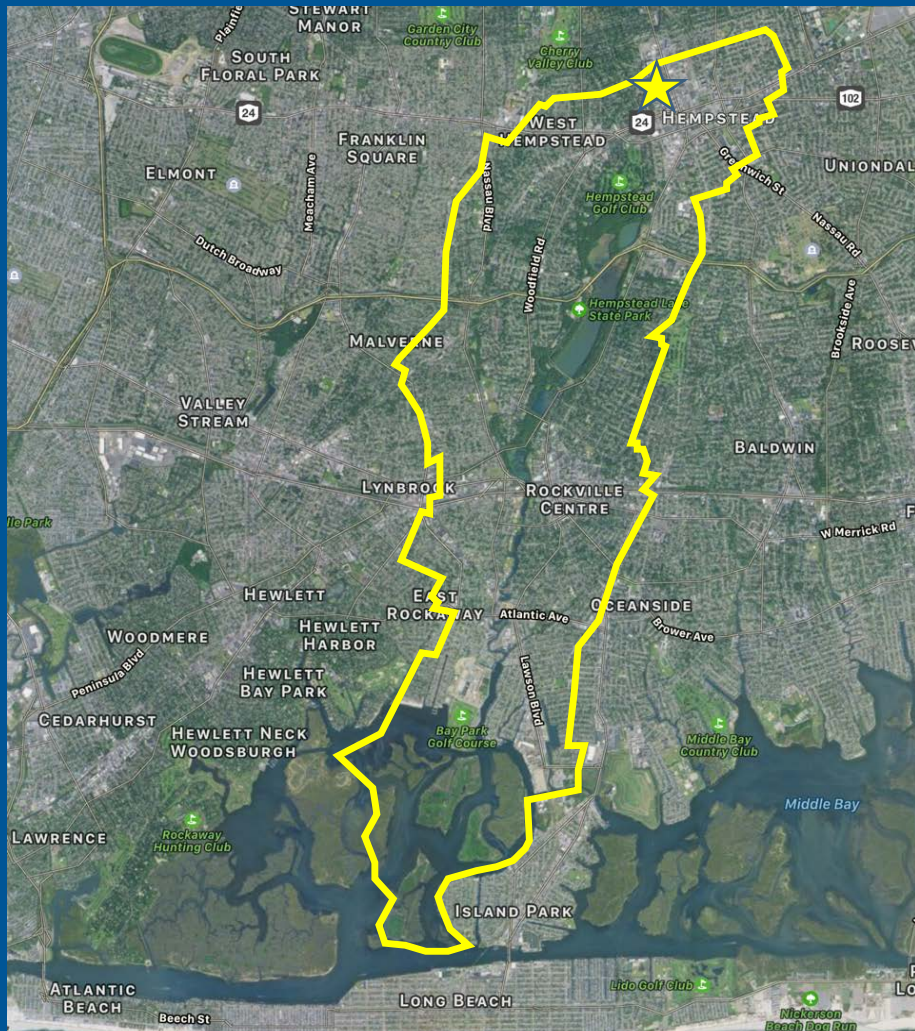
PRIORITIZATION RANKING BREAKDOWN (CONTINUED)							
ID	PROJECTNAME	Costs	Benefits	Risk & Vulnerability	Synergies	Social Resilient	Total Project Rating
GG	Hendrickson Avenue	24.0	1.9	3.0	4.8	0.0	33.9
I	Lakeview Avenue	24.0	0.0	2.4	4.9	0.0	32.9
OO	Waldo Avenue	24.8	1.2	3.9	3.0	0.0	32.9
AA	Beverly Road	24.5	1.6	2.9	3.6	0.0	32.6
K	Peninsula Boulevard Greenway	24.3	0.0	2.4	4.3	0.0	32.6
Y	Maple Avenue and Long Beach Road Intersection	24.3	0.1	2.7	5.2	0.0	32.3
LL	Halls Pond Study	24.5	0.0	2.5	4.9	0.0	31.9
Q	Williamson Street	22.5	3.4	4.4	1.3	0.0	31.6
T	Lawson Boulevard	11.8	9.5	7.1	2.4	0.0	30.8
S	East Rockaway Long Island Railroad Station	23.5	1.2	1.7	3.6	0.0	30.4
R	Bay County Park	23.6	1.1	2.5	1.4	0.0	29.6
FF	Mill River Storm Surge Barrier	0.0	15.8	10.2	3.5	0.0	29.5
MM	Greenway	10.2	0.0	2.0	4.3	0.0	27.2
W	East Rockaway Downtown Study	24.5	0.0	0.0	0.0	0.0	24.5
Z	Lakeview Avenue and Hempstead Avenue Intersection	15.0	0.8	2.6	5.4	0.0	23.8
CC	Marina Pointe Marsh Restoration	11.4	4.6	2.1	2.5	0.0	22.4

The prioritization framework is intended to identify a collection of transformative projects that increase the resiliency of the Mill River corridor. Numerical scores for each metric category were developed (a detailed discussion on category weighting is included in Objective #6 document under separate cover) rather than tangible values such as dollars. Each of the categories was formed so that a higher score indicates a positive, preferred element of the project. No negative scores are included in the prioritization framework.

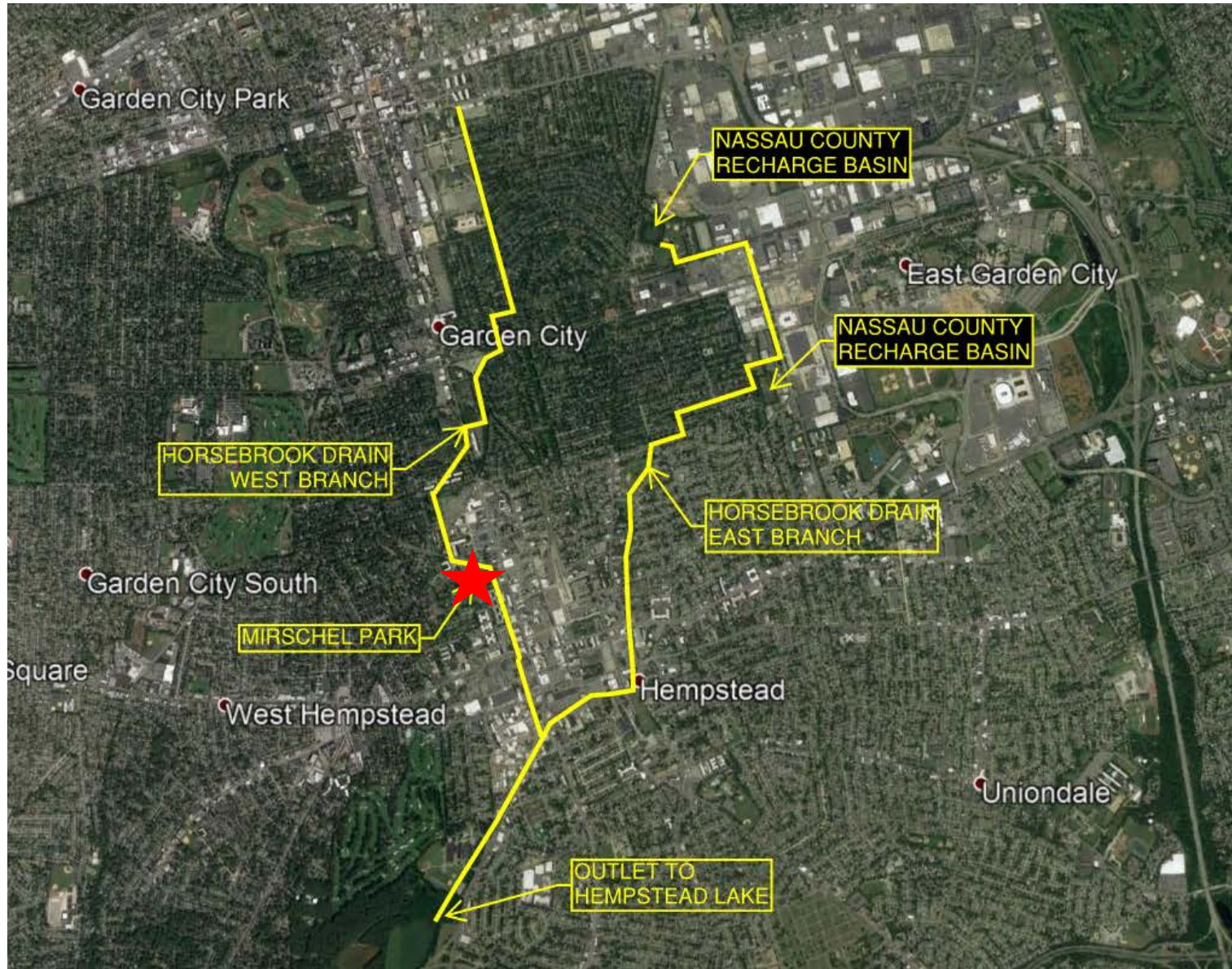
HORSEBROOK DRAIN WEST BRANCH RECHARGE BASIN



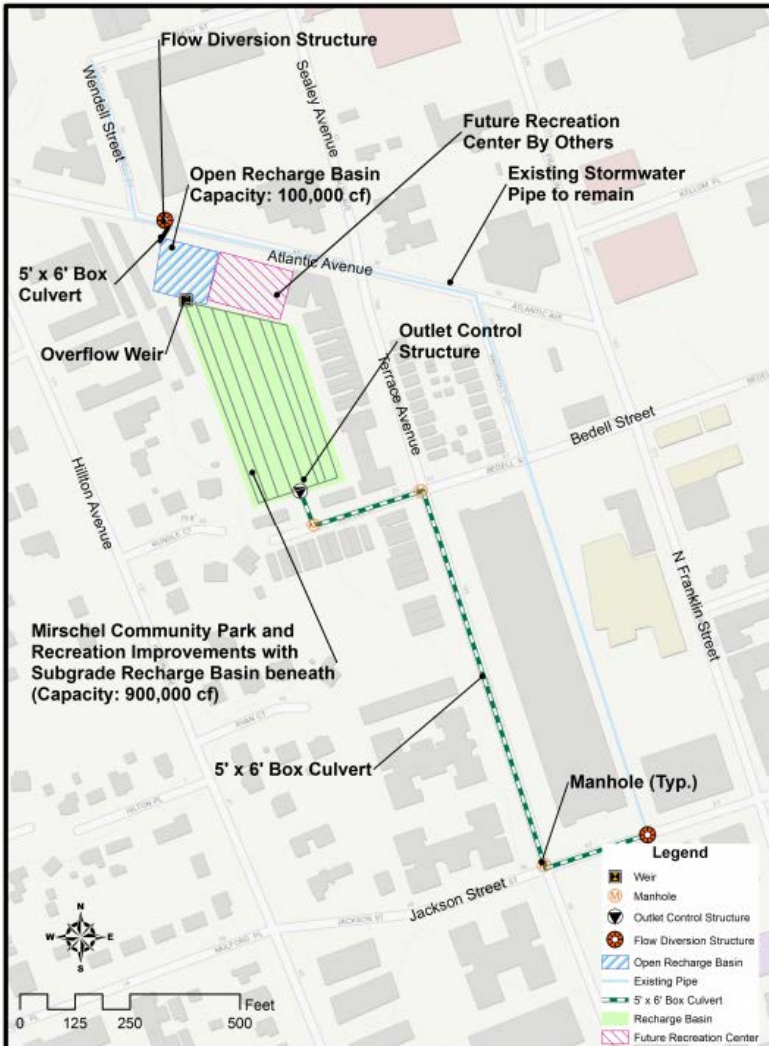
HORSEBROOK DRAIN WEST



HORSEBROOK DRAIN WEST



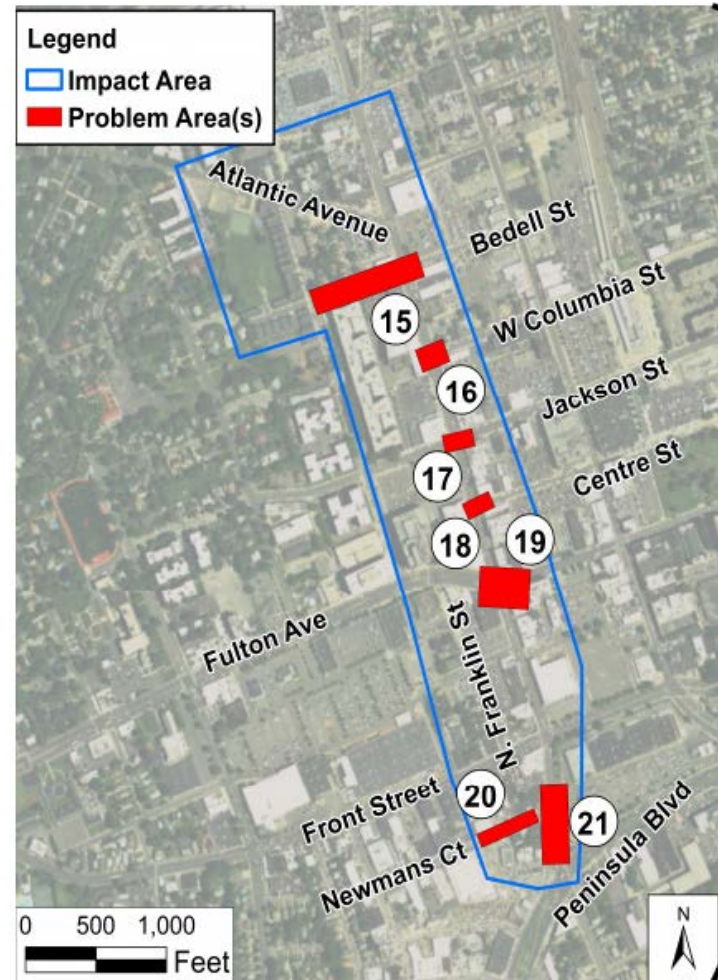
HORSEBROOK DRAIN PROJECT OBJECTIVES



- ATTENUATE NEARBY FLOODING FOR THE 10-YEAR STORM EVENT
- IMPROVE WATER QUALITY BY INFILTRATION
- PROVIDE COMMUNITY PARK AND RECREATION IMPROVEMENTS

HORSEBROOK DRAIN WEST

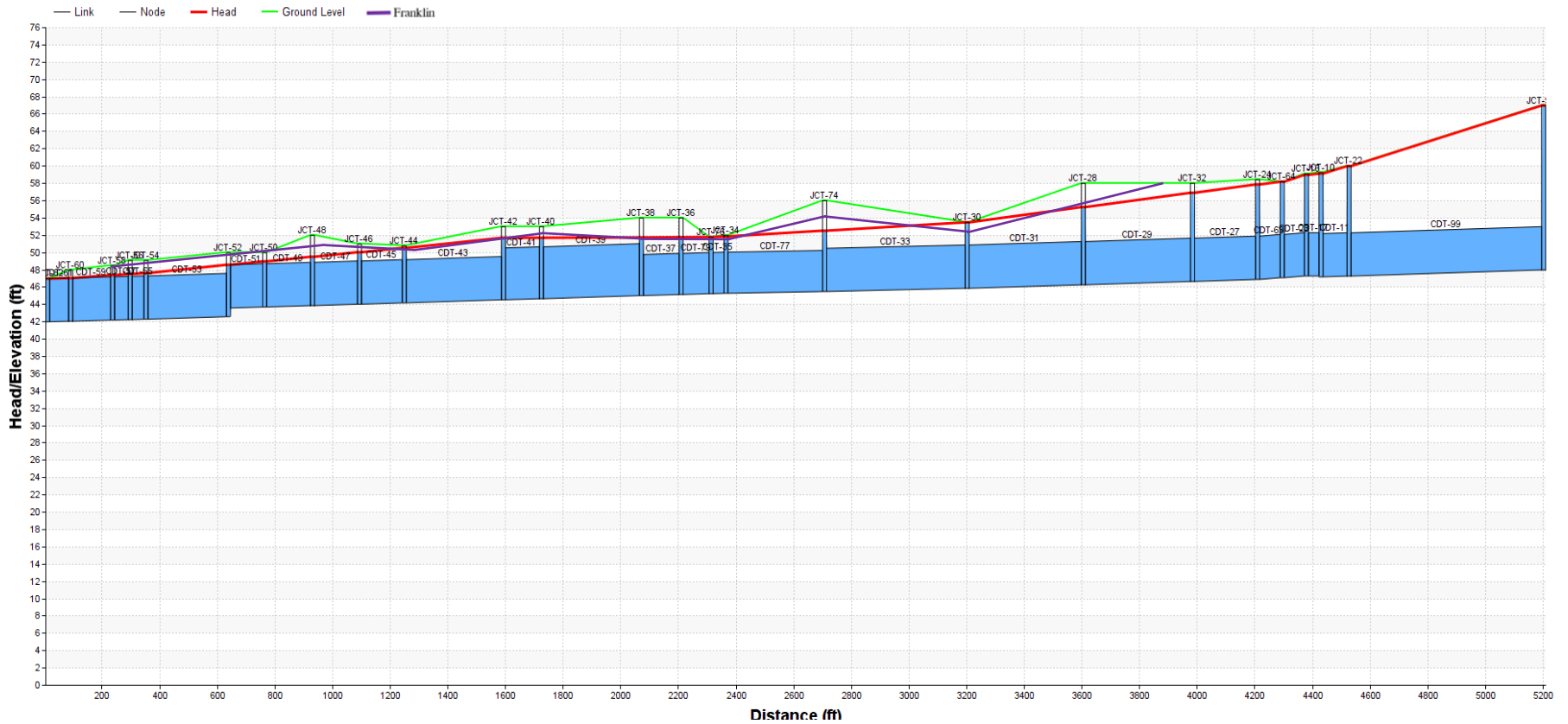
MODELING ANALYSIS



HORSEBROOK DRAIN WEST

MODELING ANALYSIS

HGL Profile with Maximum Data of Links CDT-61, CDT-59, ..., CDT-99



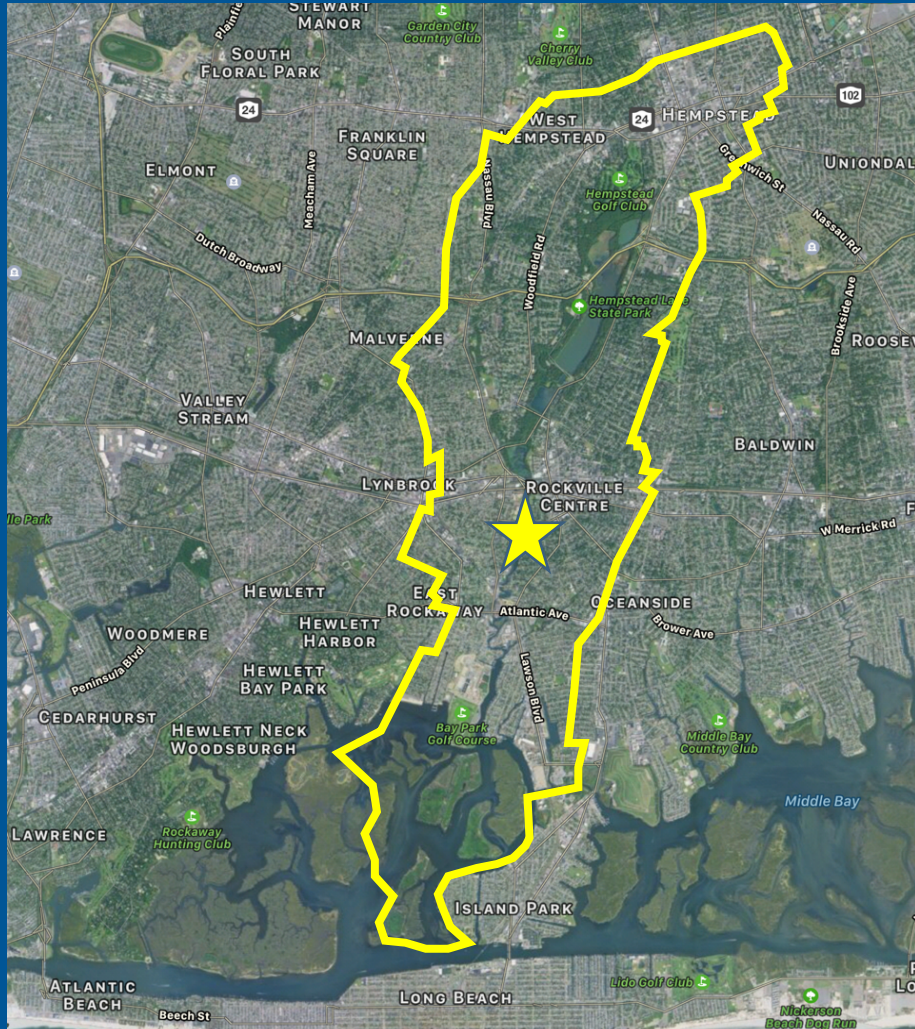
HORSEBROOK DRAIN WEST MIRSCHEL PARK



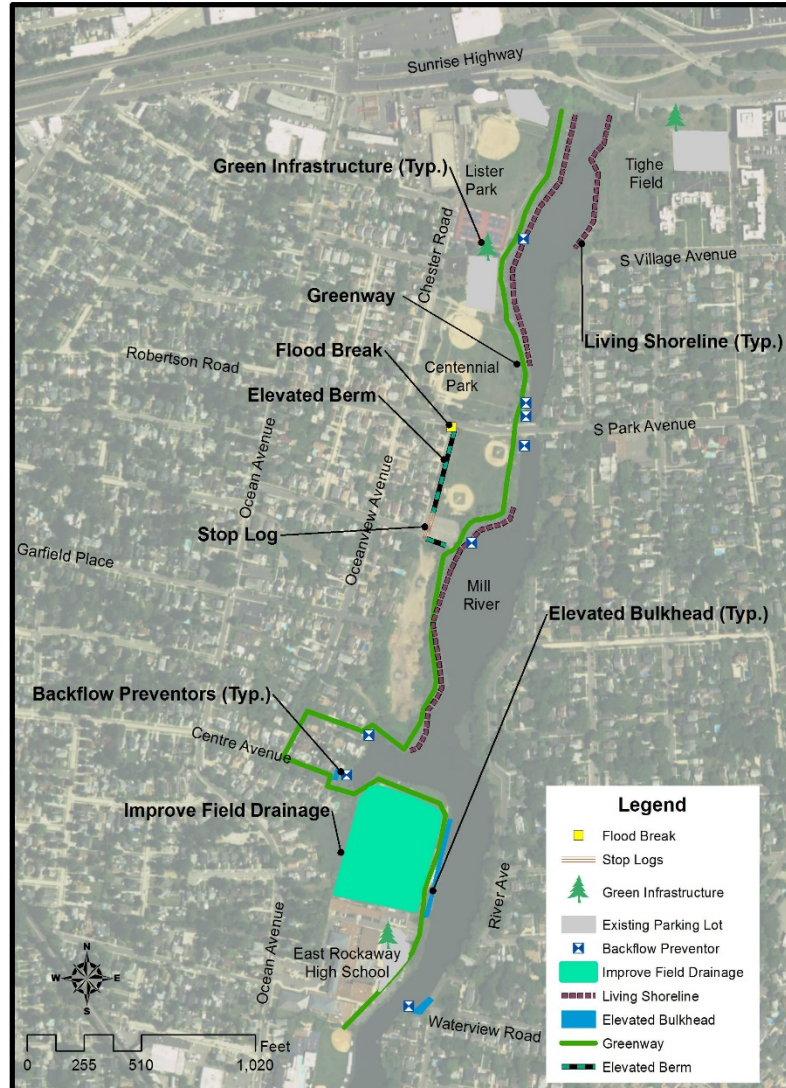
EAST ROCKAWAY HIGH SCHOOL / LISTER PARK



ERHS/LISTER PARK



ERHS/LISTER PARK PROJECT OBJECTIVES



- MITIGATE SURGE/TIDAL FLOODING WITH BACKFLOW PREVENTERS AND FLOOD PROTECTION BERM
- IMPROVE WATER QUALITY WITH GREEN INFRASTRUCTURE
- PROVIDE ACCESS TO THE WATERFRONT WITH EXTENSION OF GREENWAY
- REDUCE SHORELINE EROSION AND ENHANCE HABITAT WITH LIVING SHORELINE IMPROVEMENTS

ERHS/LISTER PARK EXISTING CONDITIONS

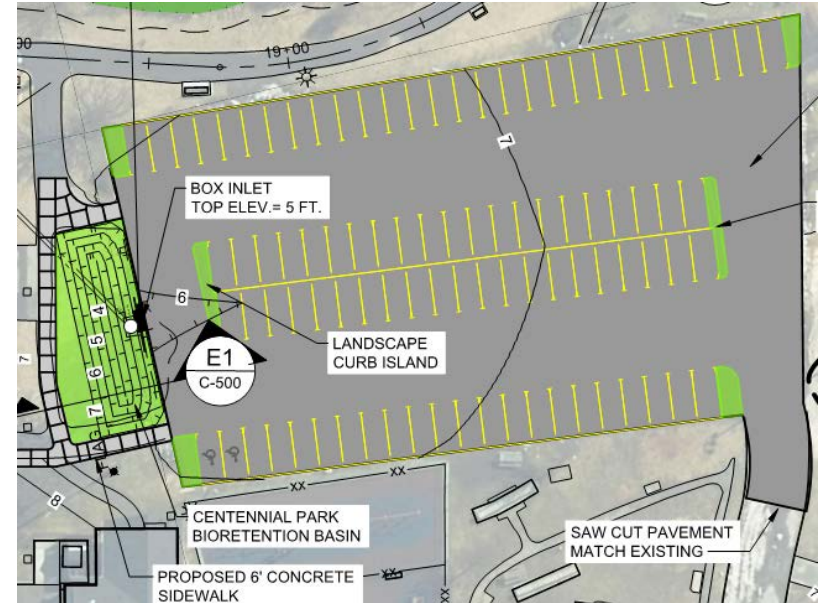


ERHS/LISTER PARK GREEN INFRASTRUCTURE

TIGHE PARK

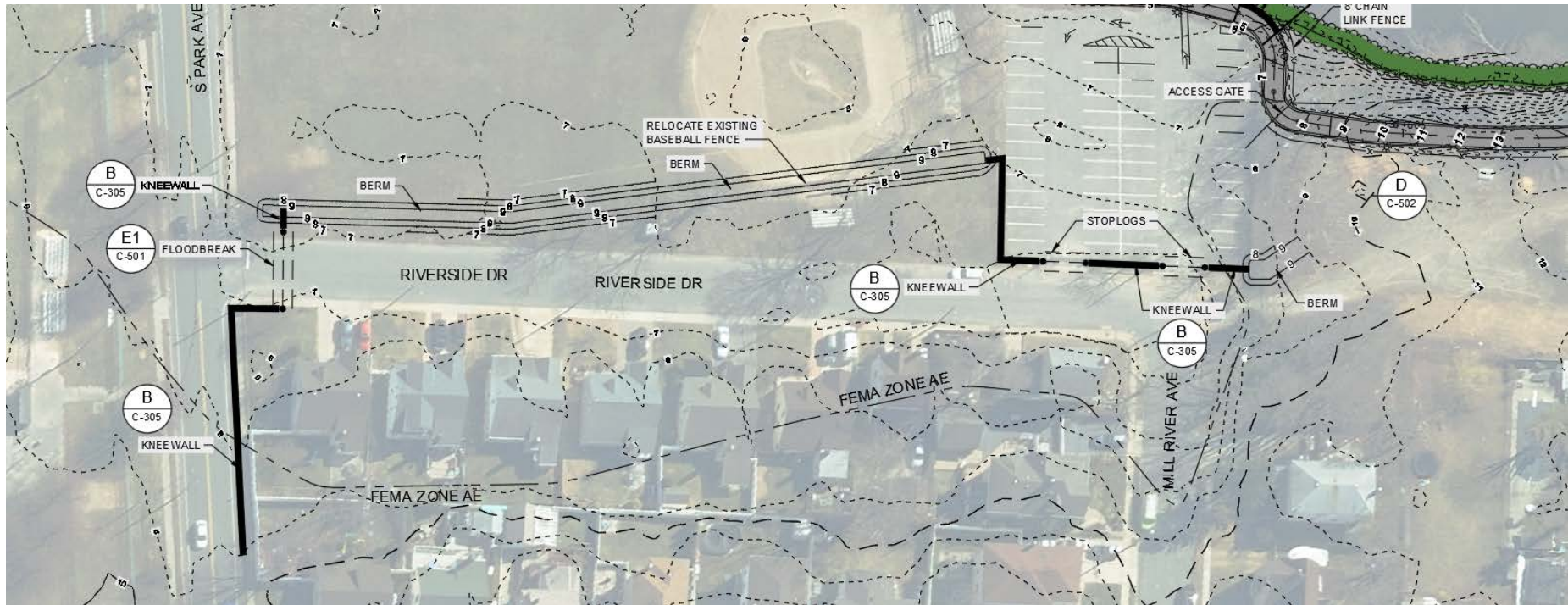


CENTENNIAL PARK



BIORETENTION BASINS DESIGN IN ACCORDANCE WITH NEW YORK STATE
STORMWATER DESIGN MANUAL

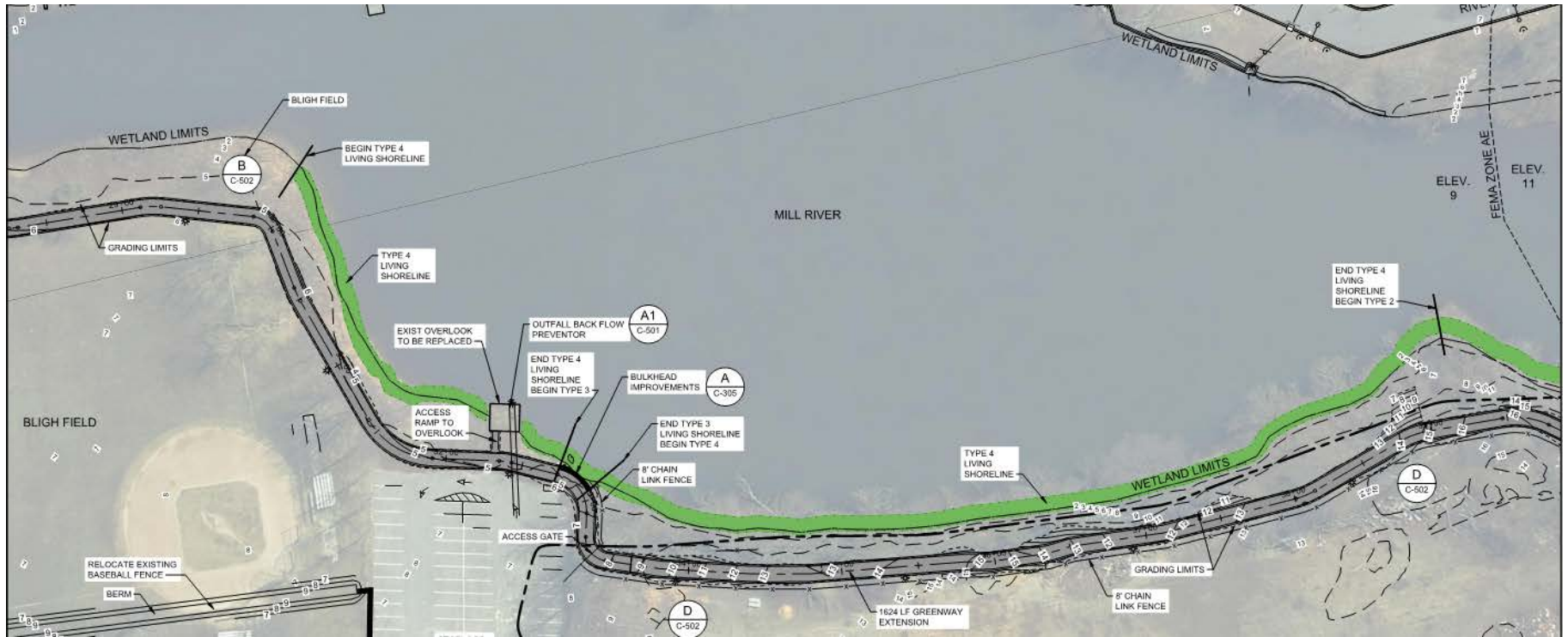
ERHS/LISTER PARK FLOOD MITIGATION



LEVEL OF SERVICE IS THE FEMA BASE FLOOD ELEVATION

ERHS/LISTER PARK

PUBLIC ACCESS TO THE WATERFRONT



ERHS/LISTER PARK

LIVING SHORELINE – BULKHEAD

BULKHEAD
IMPROVEMENTS

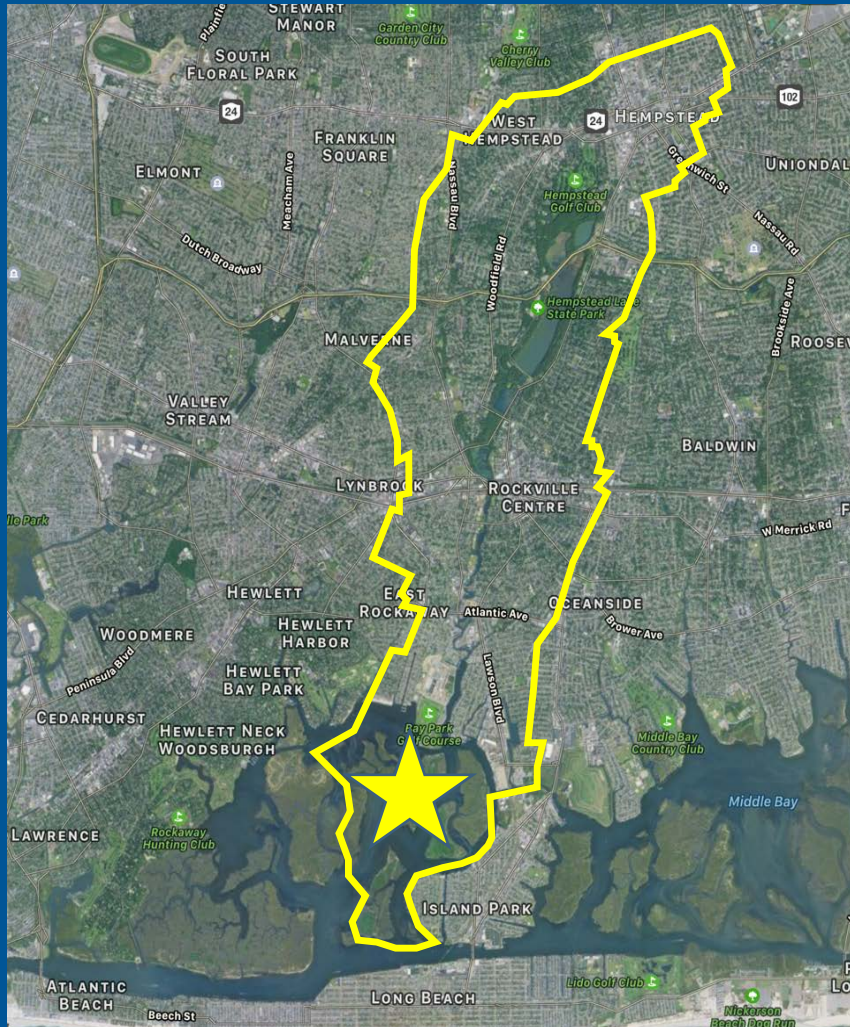


LIVING SHORELINE

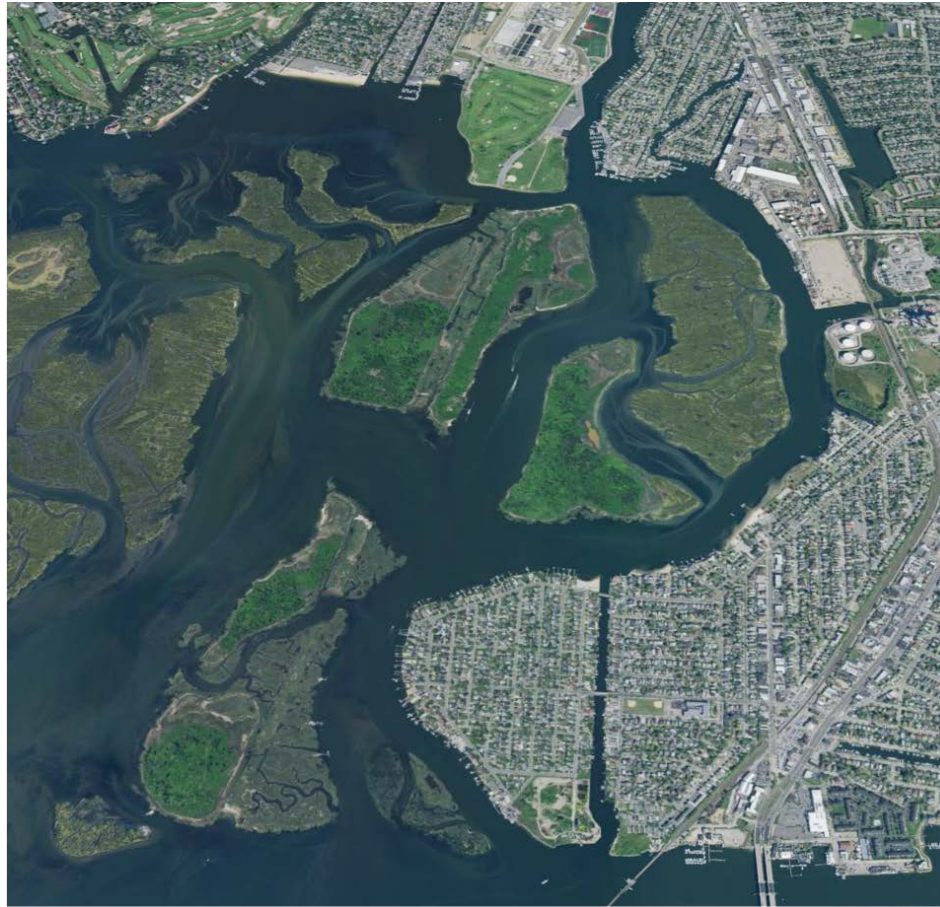
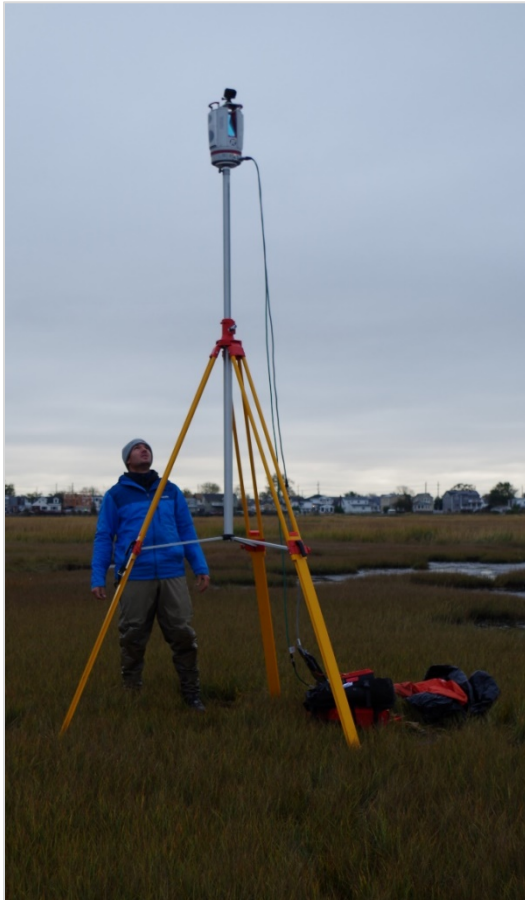
COASTAL MARSH RESTORATION



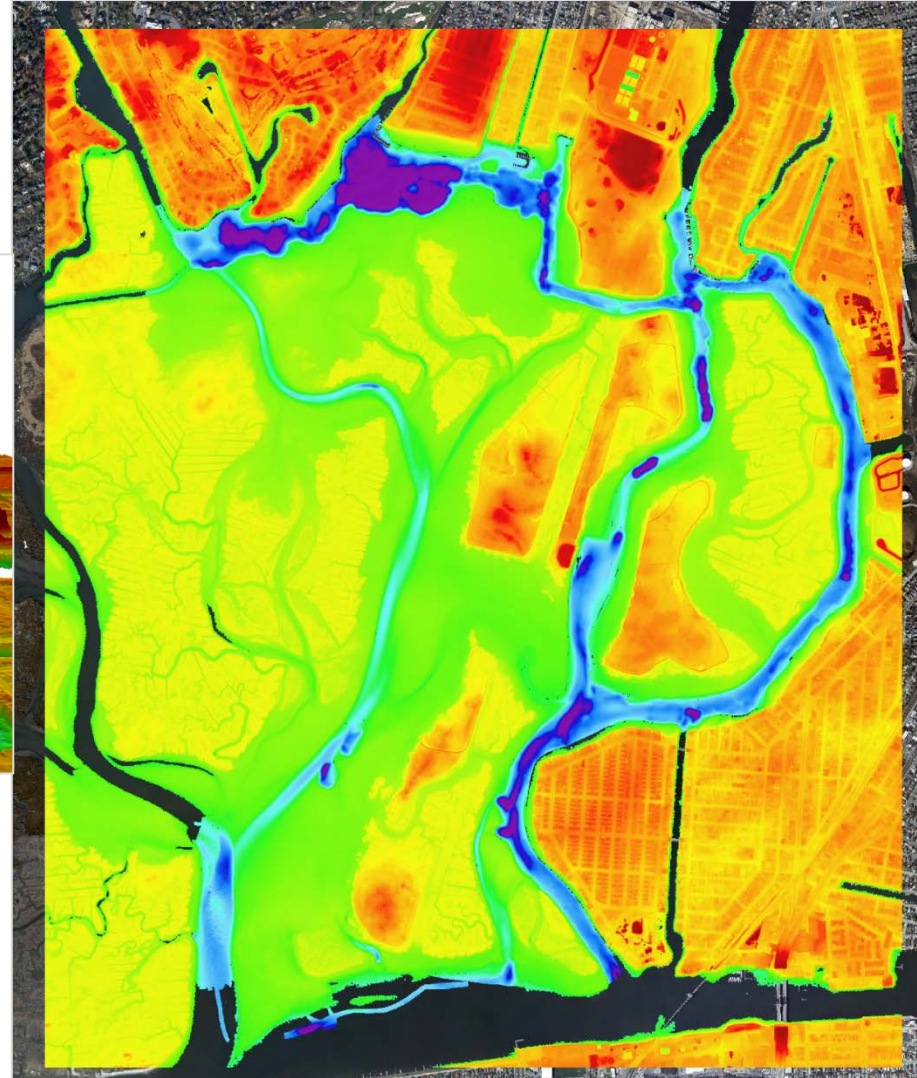
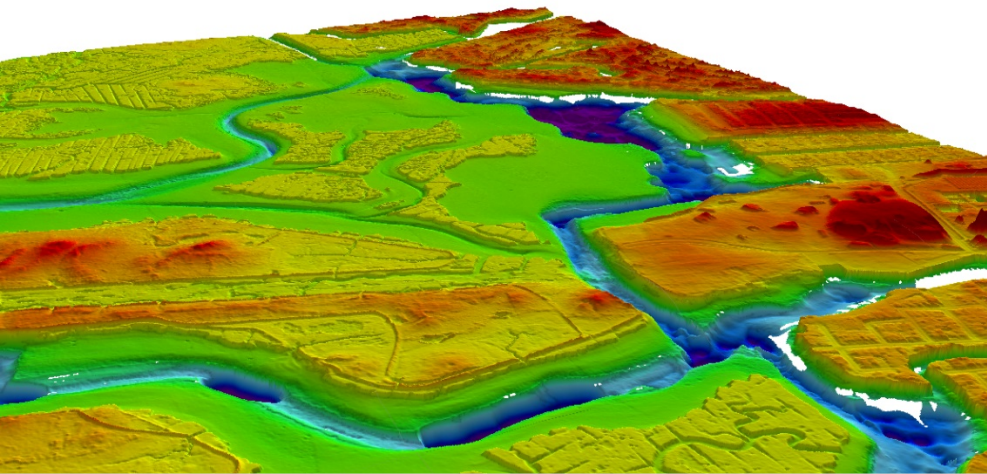
COASTAL MARSH RESTORATION



COASTAL MARSH RESTORATION TOPOGRAPHY – LIDAR REFLECTANCE

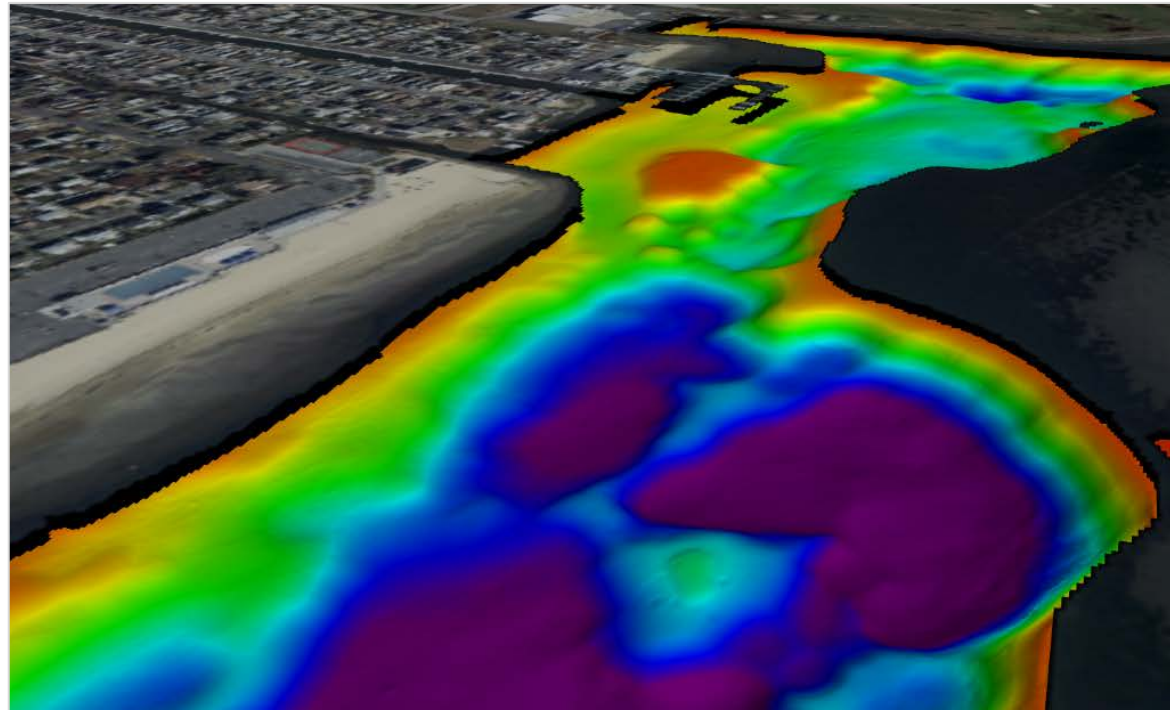
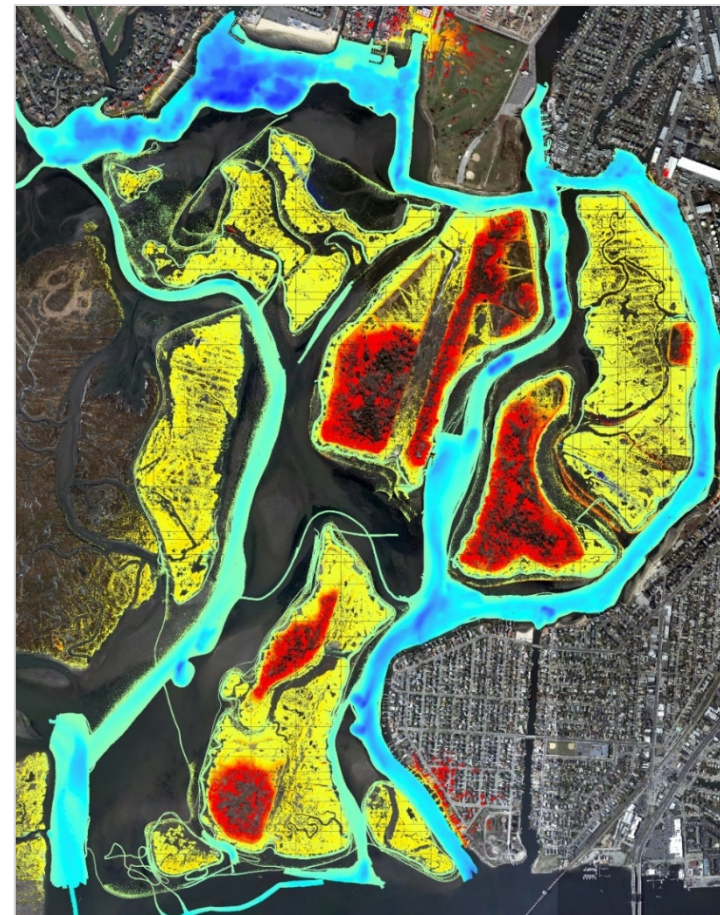


COASTAL MARSH RESTORATION DIGITAL ELEVATION MODEL

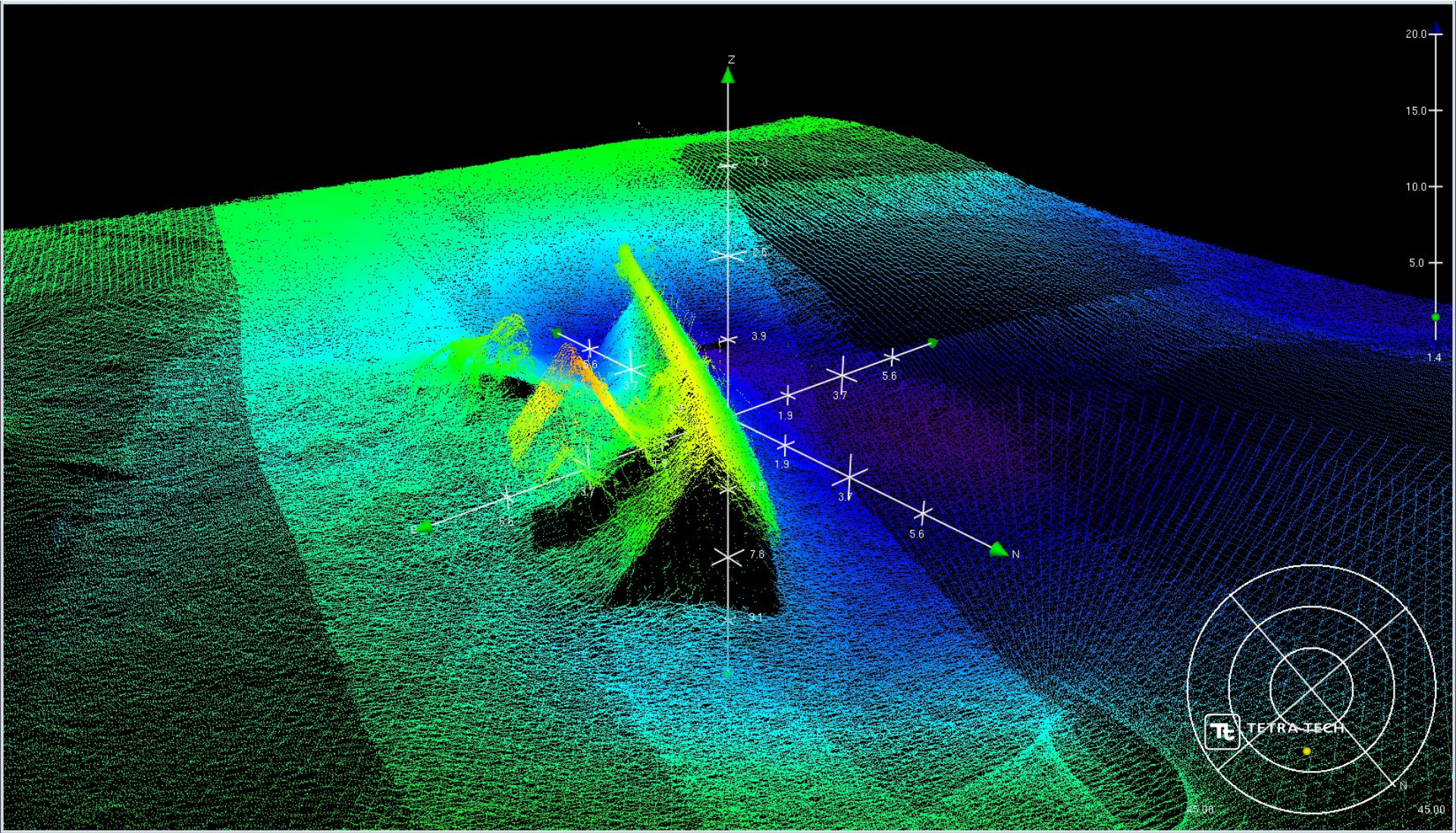


COASTAL MARSH RESTORATION

BATHYMETRY - MULTIBEAM



COASTAL MARSH RESTORATION CULTURAL RESOURCES



COASTAL MARSH RESTORATION BIOLOGICAL RESOURCE SURVEY

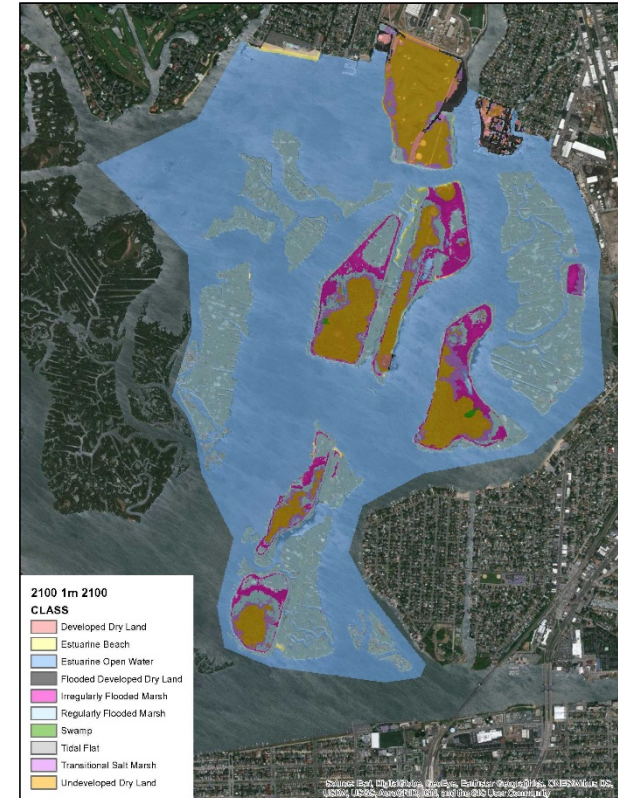
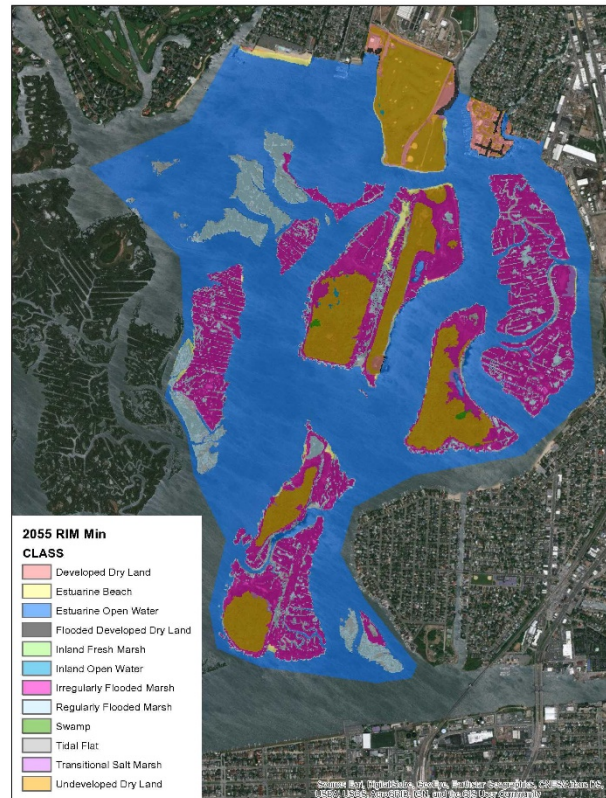
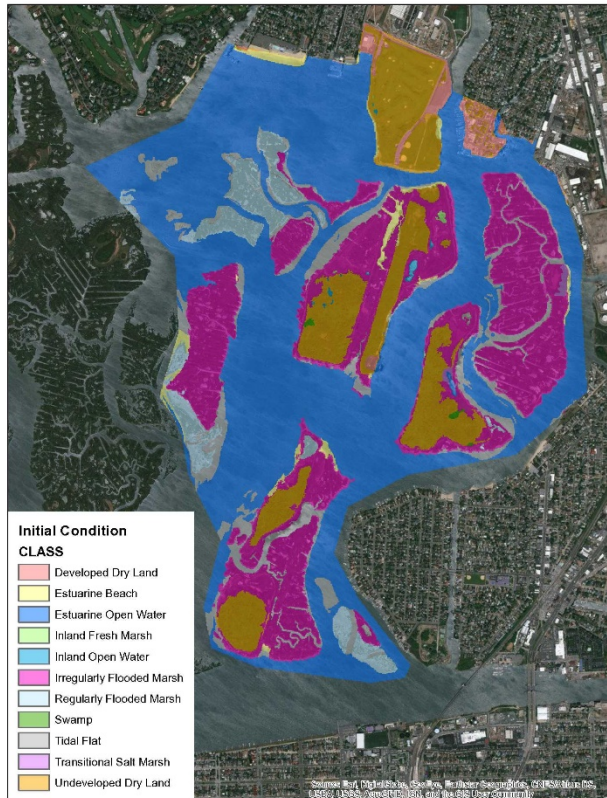


COASTAL MARSH RESTORATION SEA LEVEL RISE

INITIAL CONDITIONS (2004)

2055 (19 INCHES)

2100 (39 INCHES)



COASTAL MARSH RESTORATION

TYPES OF MARSH IMPROVEMENTS



Thin-Layer Placement

Interior Pond Filing /
Elevated Platforms



COASTAL MARSH RESTORATION

COASTAL FIELD STATION



COASTAL MARSH RESTORATION COASTAL FIELD STATION



THANK YOU



LIVING WITH THE BAY RESILIENCY STRATEGY



THE PLAN, THE PROJECTS, THE PROGRAM

<https://stormrecovery.ny.gov/living-bay>

Jake Oldenburger, PE, CFM, ENV SP, LEED GA
Jason Hellendrung, ASLA, PLA

complex world | CLEAR SOLUTIONS™

June 2019