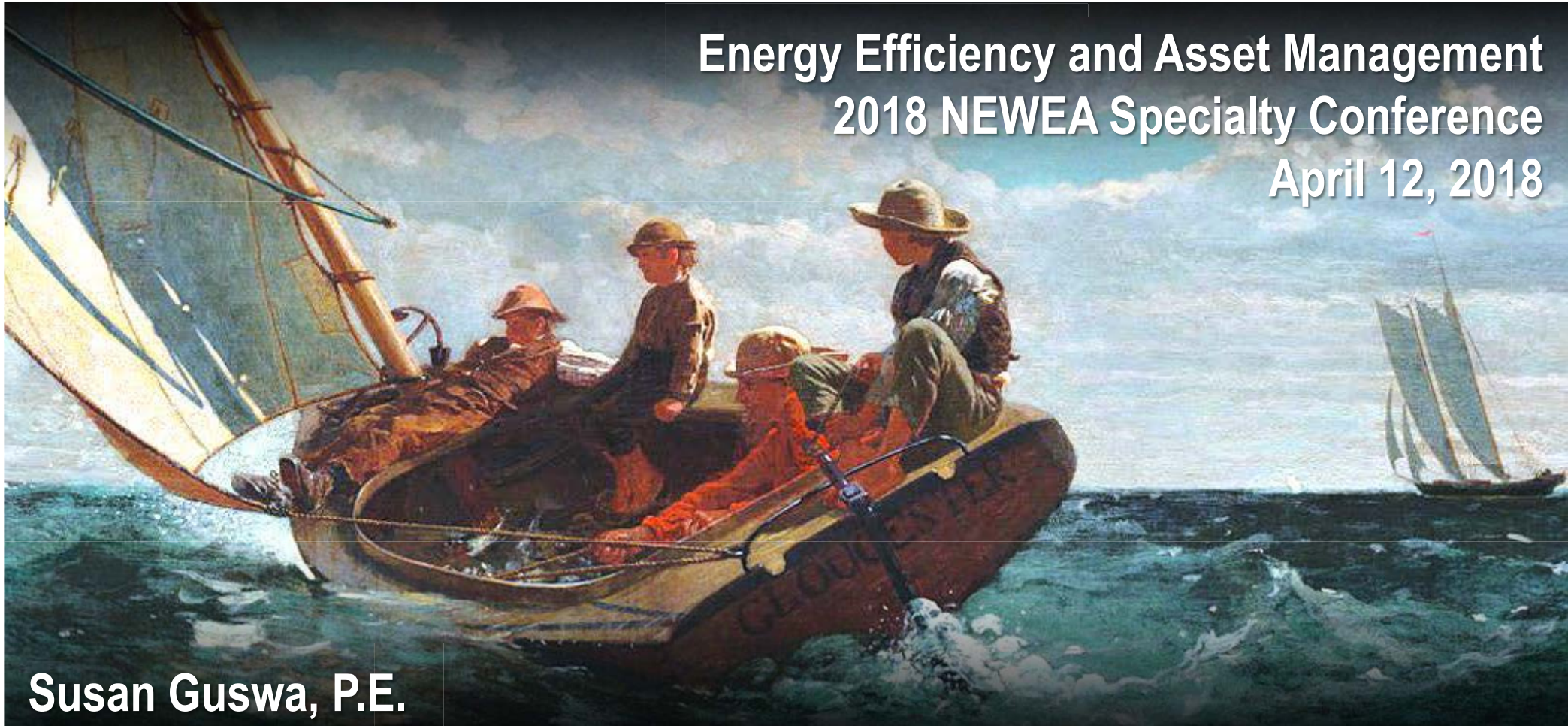




Are You Actually Using Your Data?

Going from Collection to Action to Solve Real-World Problems

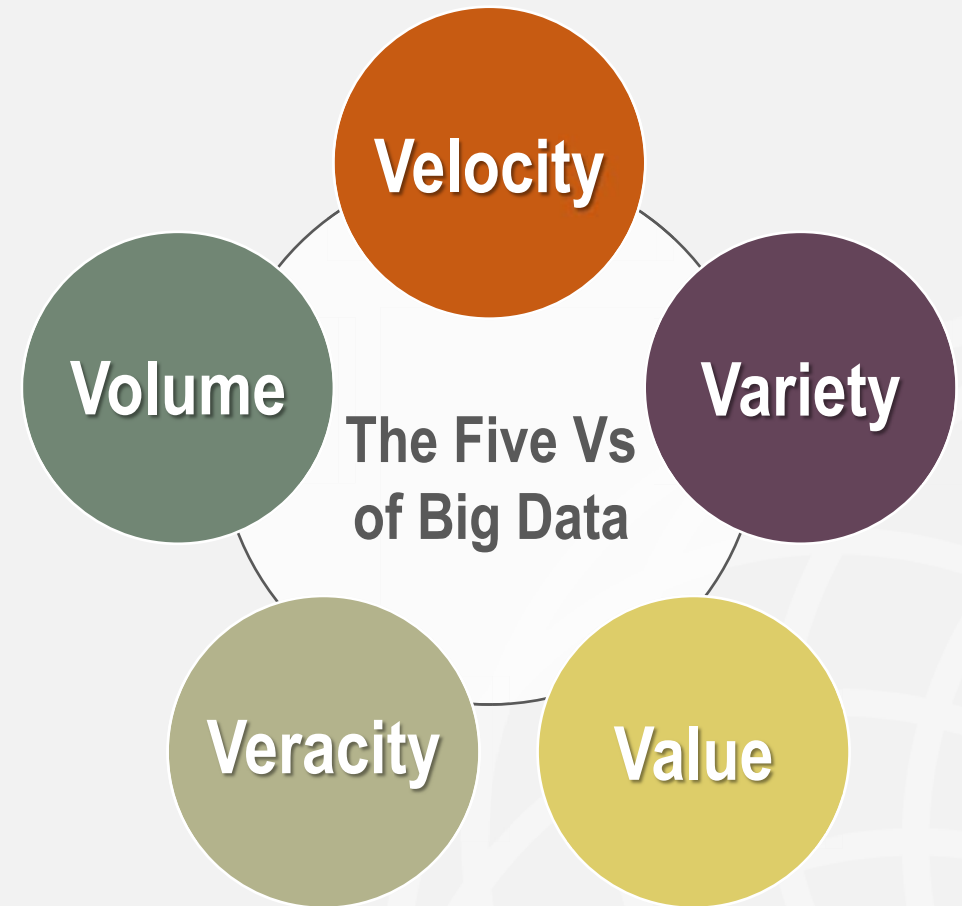
Energy Efficiency and Asset Management
2018 NEWEA Specialty Conference
April 12, 2018



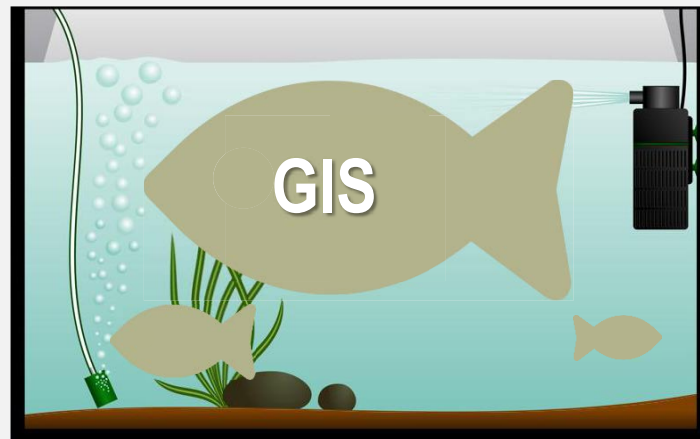
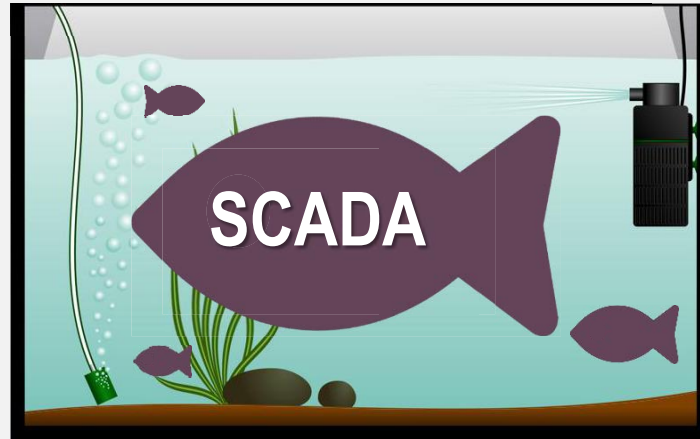
Susan Guswa, P.E.

Current Buzz

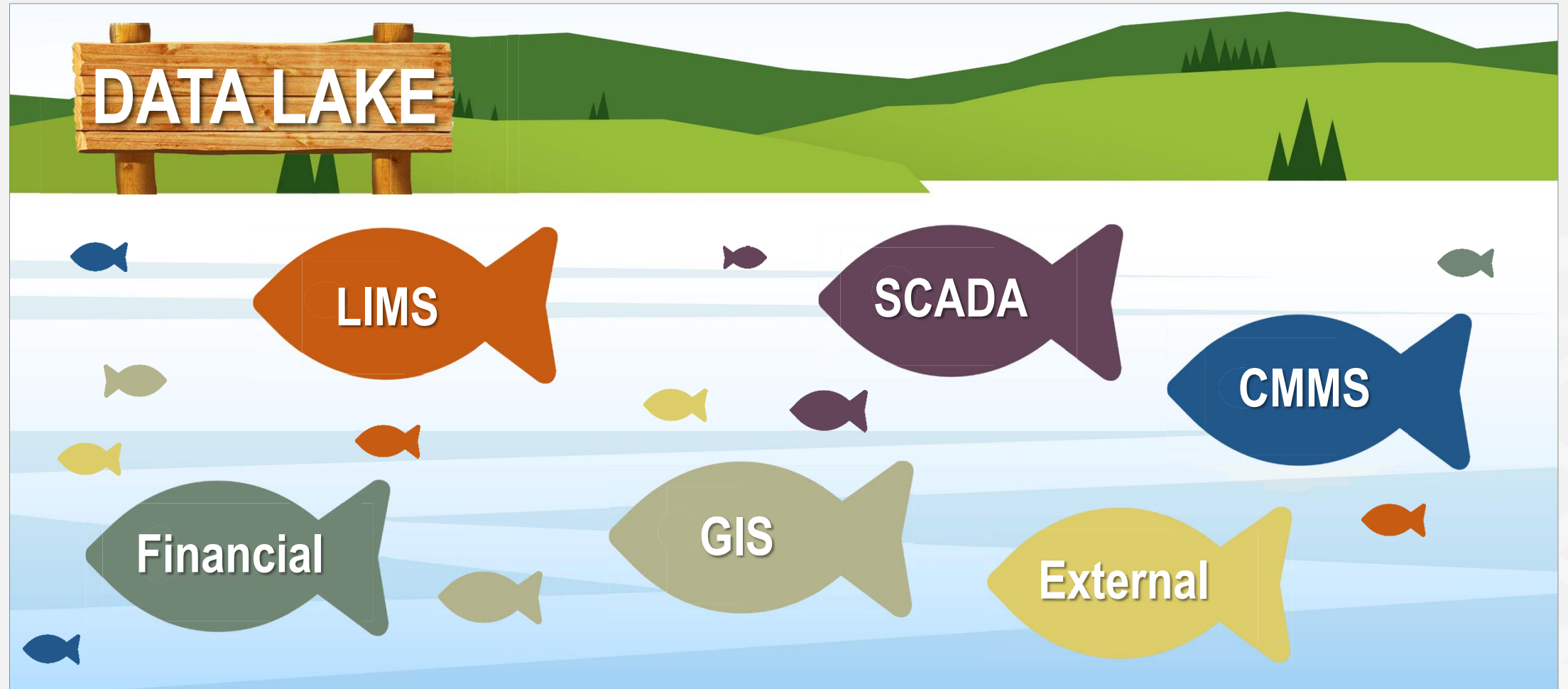
- Technology
 - Internet of Things (IoT)
 - Big Data
 - Data Analytics
 - Artificial Intelligence
- Decision Making
 - Intelligent Systems
 - Smart Cities
 - Asset Management



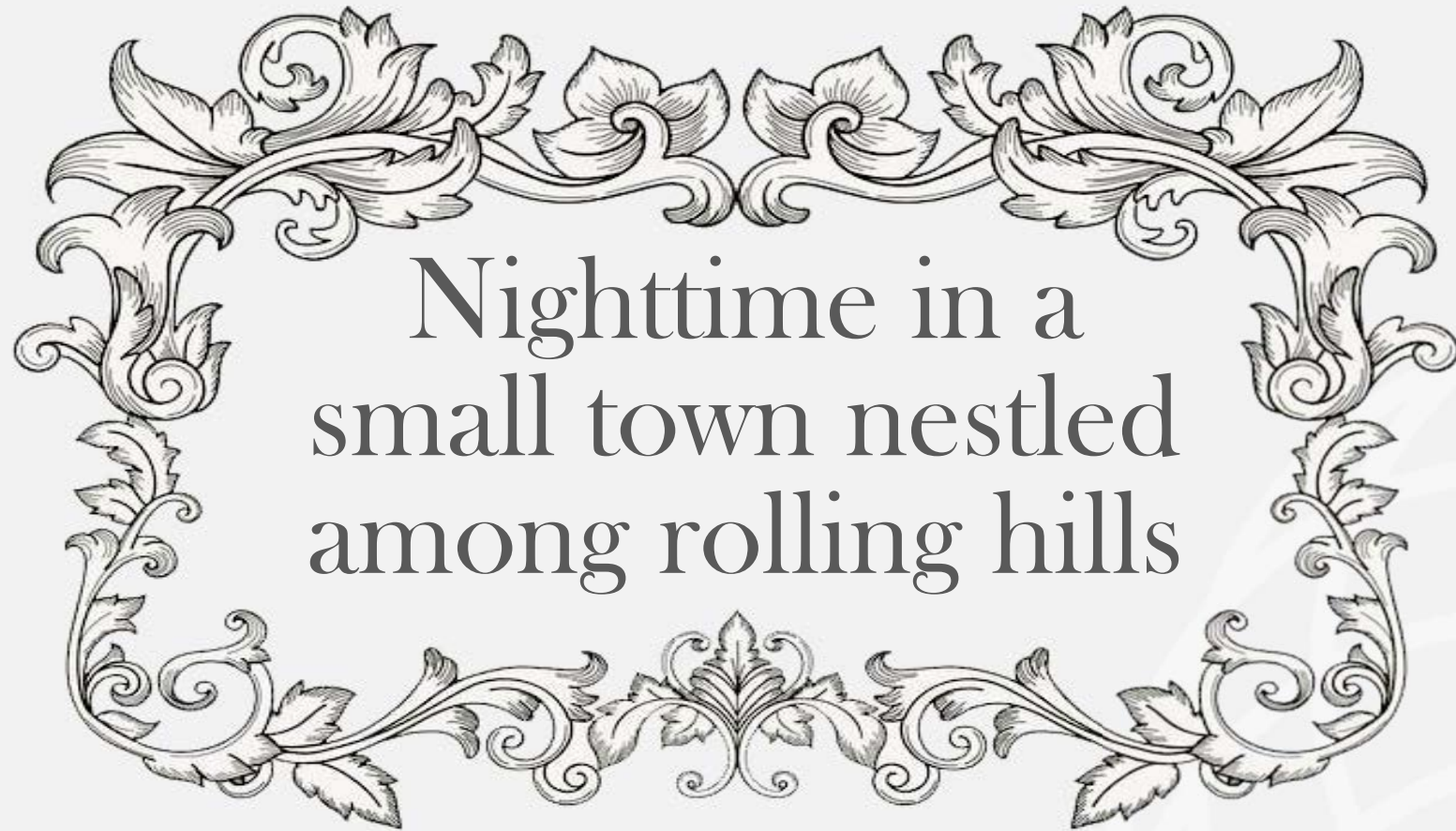
Historical Data Management



Technology is Transforming Aquariums to Lakes



Picture this:



Did you imagine something like this?

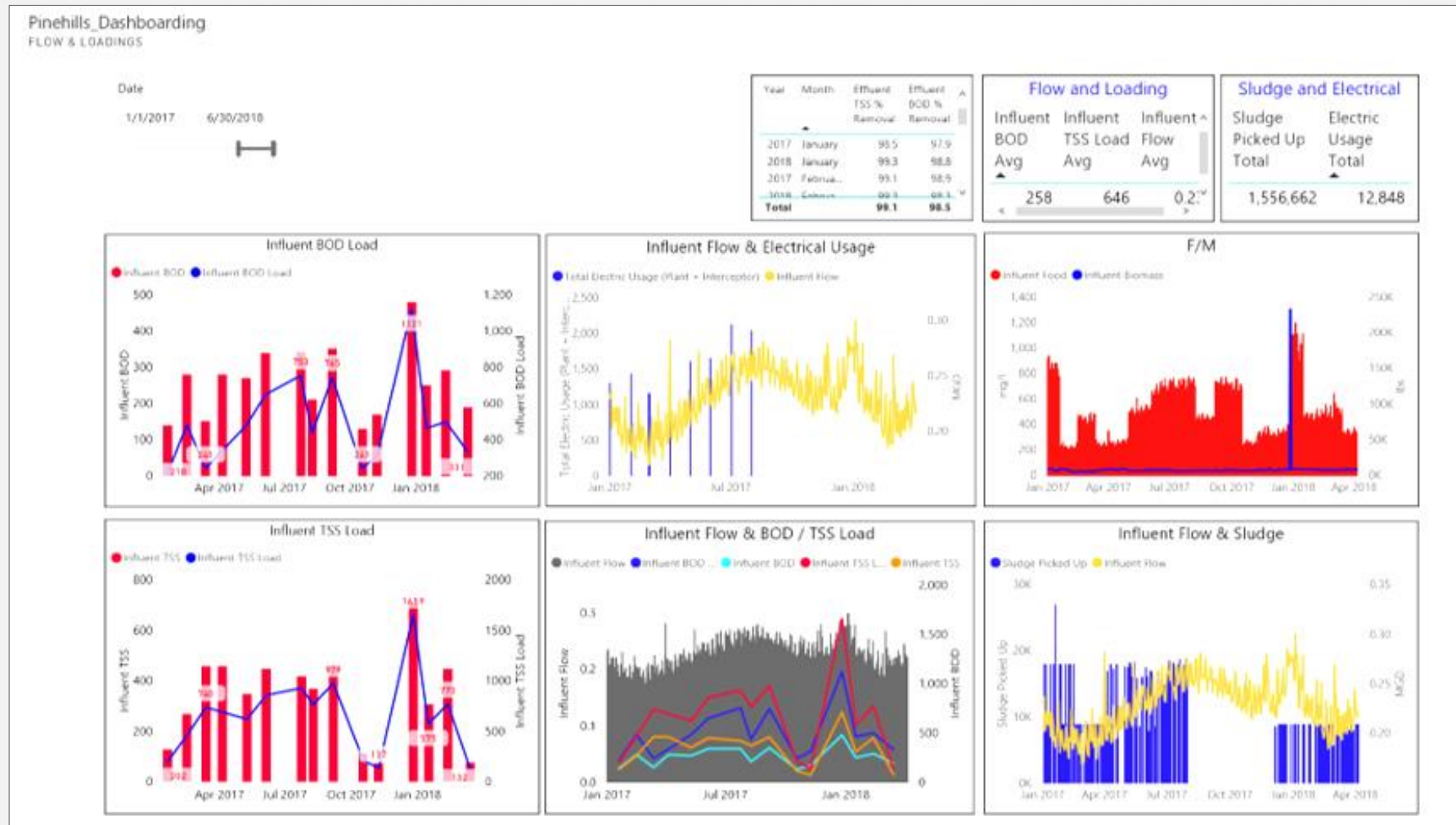


Or something like this:



Vincent van Gogh *The Starry Night* 1886

Now We Can Magnifying its Communication Potential



And Integrate Data from Various Sources

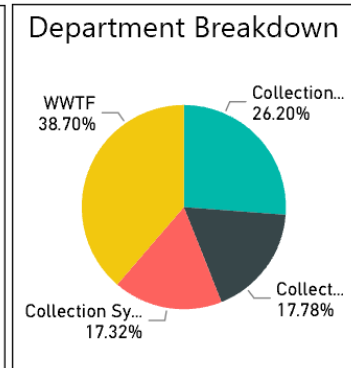
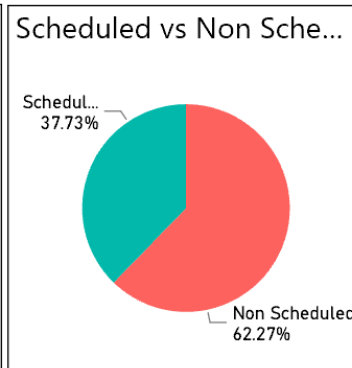
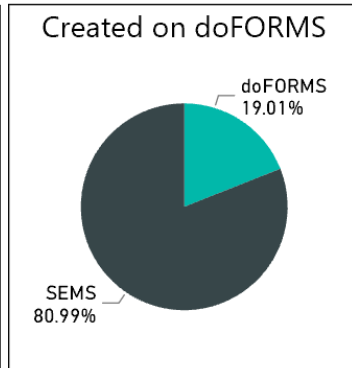
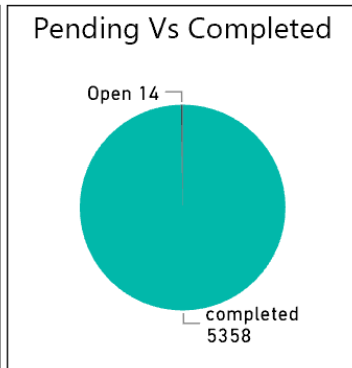
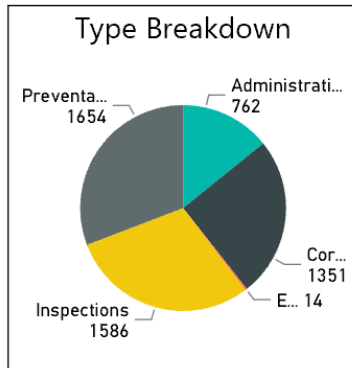


1/1/2014

3/1/2017

Work History Reporting

To clear filters click on the white space in any pie chart



Status Date	Schedule Date	#	Asset Name	Description	Type	Employee	Hours	Status	History Notes
3/1/2017	4/24/2017	2808	Instrumentation	Instrument Cleaning - Weekly	Preventative Maintenance	Jim Wilson	0.0	completed	Service Incident Created
3/1/2017	4/15/2017	2804	ORP controller	Sensor calibration - Monthly	Preventative Maintenance	Jim Wilson	0.0	completed	Service Incident Created
3/1/2017	4/15/2017	2802	pH controller #1	Sensor calibration - Monthly	Preventative Maintenance	Jim Wilson	0.0	completed	Service Incident Created
3/1/2017	4/15/2017	2803	pH controller #2	Sensor calibration - Monthly	Preventative Maintenance	Jim Wilson	0.0	completed	Service Incident Created
3/1/2017	4/1/2017	2801	2013 Ford F150	Oil Change - F150 Truck	Preventative Maintenance	Jim Wilson	0.0	completed	Service Incident Created
3/1/2017	4/10/2017	2800	4 Gas monitor	4 gas meter calibration - Monthly	Preventative Maintenance	Jim Wilson	0.0	completed	Service Incident Created
3/1/2017	4/1/2017	2799	ALL SAFETY LIGHTING	Test all e-lighting,	Inspections	Jim Wilson	0.0	completed	Service Incident Created
3/1/2017	4/14/2017	2796	ALL EMERGENCY EYEWASH & SHOWE...	Eye Wash Inspection - Weekly	Inspections	Jeff Leonard	0.0	completed	Service Incident Created
3/1/2017	4/21/2017	2797	ALL EMERGENCY EYEWASH & SHOWE...	Eye Wash Inspection - Weekly	Inspections	Jeff Leonard	0.0	completed	Service Incident Created
3/1/2017	4/28/2017	2798	ALL EMERGENCY EYEWASH & SHOWE...	Eye Wash Inspection - Weekly	Inspections	Jeff Leonard	0.0	completed	Service Incident Created
3/1/2017	4/26/2017	2792	PH EQUIPMENT FOR EFFLUENT	Effluent pH meter	Preventative Maintenance	Jim Wilson	0.0	completed	Service Incident Created
3/1/2017	4/25/2017	2791	PLANT EFFLUENT SAMPLER	Effluent Sampler Monthly PM	Preventative Maintenance	Jeff Leonard	0.0	completed	Service Incident Created
3/1/2017	4/26/2017	2788	TRAVELING BRIDGE FILTER #1	Filter #1 Monthly PM	Preventative Maintenance	Jeff Leonard	0.0	completed	Service Incident Created
3/1/2017	4/10/2017	2788	UV DISINFECTION UNIT #1	UV Cleaning - Monthly	Preventative Maintenance	Jeff Leonard	0.0	completed	Service Incident Created

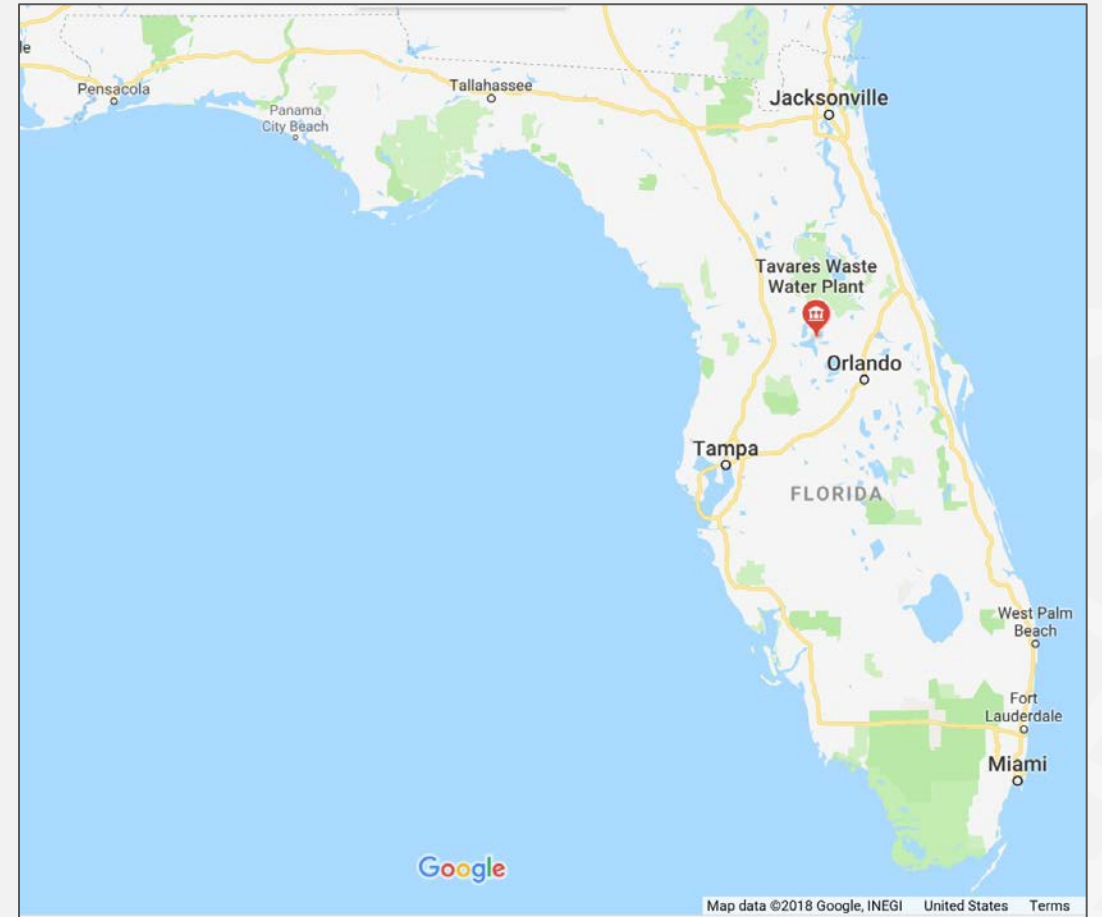
Start with Defining Value

- What question are you trying to answer?
- You don't have to fill the whole lake or catch all the fish at once



This Photo by Unknown Author is licensed under CC BY-ND (edited)

Case Study: Tavares, FL



Monthly Electric Bills at the WRRF

\$35,000/month in 2006



\$25,000/month in 2010



\$18,000/month in 2012

Phase 1: Electricity Bill Reduction at WRRF

- Easy Answer: Shut it Off
 - But risk permit compliance
- Focused on solids handling improvements – aeration and pumping upgrades already completed
- Results: reduction in BFP processing time, chemical use, aerobic digestion air, and filtrate pumping



Phase 2: Electricity Bill Reduction at WRRF

- Joined Electric Utility Program
 - Unit cost reduction for operation on emergency generator power during brownout periods
 - Generator tied to SCADA with remote access, which allows full changeover within five minutes
- Needed to run generator anyway to meet FL DEP regulations; was able to comply and gain financial benefit

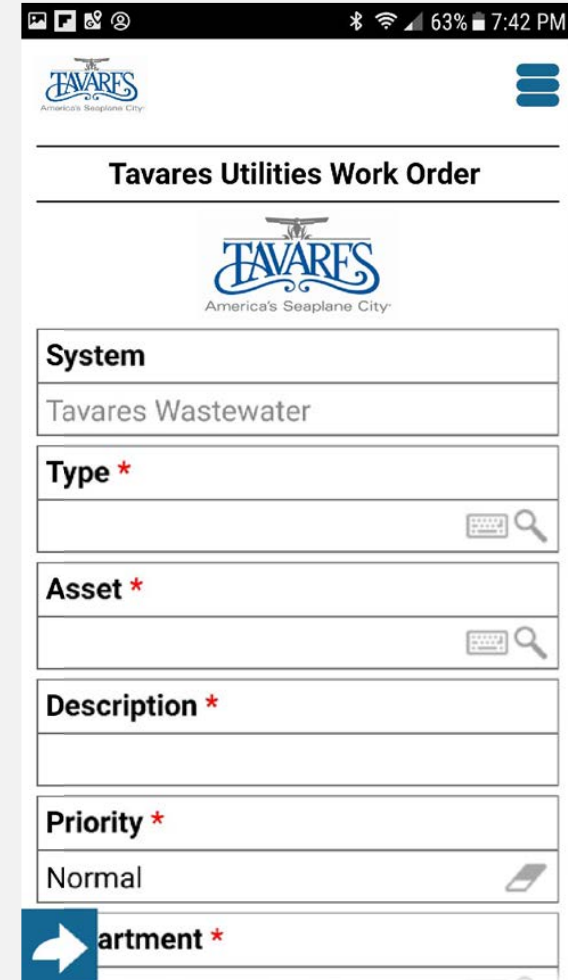


Tavares, FL – Data Integration Leads to New Insights

- 90 Pump Stations in the system
- 2008 started to collect data
 - Manually → Multitrode → SCADA
- Benchmarked for a year 2013-2014
- Integrated energy use data from utility companies and SCADA data
 - Identify performance issues
 - Prioritize upgrades
- **Data-driven decision making led to new insights into potential problems**

Tavares, FL – Next Steps

- The City has implemented a CMMS system on the wastewater side and is aggressively collecting data
- Using DoForms for mobile data collection with embedded pictures and GPS information
- Planned water system CMMS in Spring 2018
- SCADA Integration into CMMS for real time data



The screenshot shows a mobile application interface for "Tavares Utilities Work Order". At the top, there is a status bar with icons for camera, gallery, and social media, along with system icons for Bluetooth, Wi-Fi, signal strength, 63% battery, and 7:42 PM. Below the status bar is the Tavares logo and a hamburger menu icon. The main title is "Tavares Utilities Work Order". Below the title is another Tavares logo. The form contains several fields: "System" with the value "Tavares Wastewater"; "Type *" with a search icon; "Asset *" with a search icon; "Description *" which is empty; "Priority *" with the value "Normal" and a dropdown arrow; and "Department *" with a search icon and a blue arrow button.

Create Culture of Data-Driven Decision Making

- Define Value
- Collect Accurate Data
- Empower the People



Emanuel Gottlieb Leutze *Washington Crossing the Delaware* 1851: This Photo by Unknown Author is licensed under CC BY-SA

Case Study: City of South Portland, ME

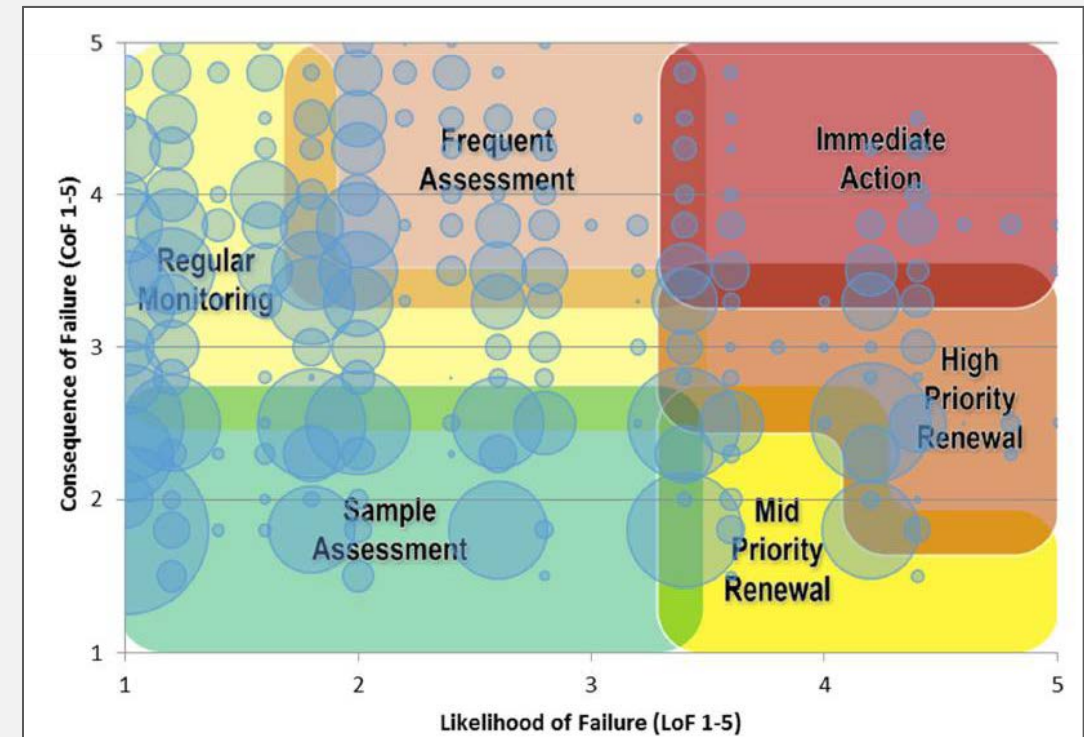
- Asset Management Enhancement Plan
- Builds on a strong foundation – GIS
- Joint project with Water Resource Protection Department and Public Works Department

Mission: Integrate long-term standard operating procedures to analyze and prioritize the management of city-wide assets and data to support cost efficient decisions.

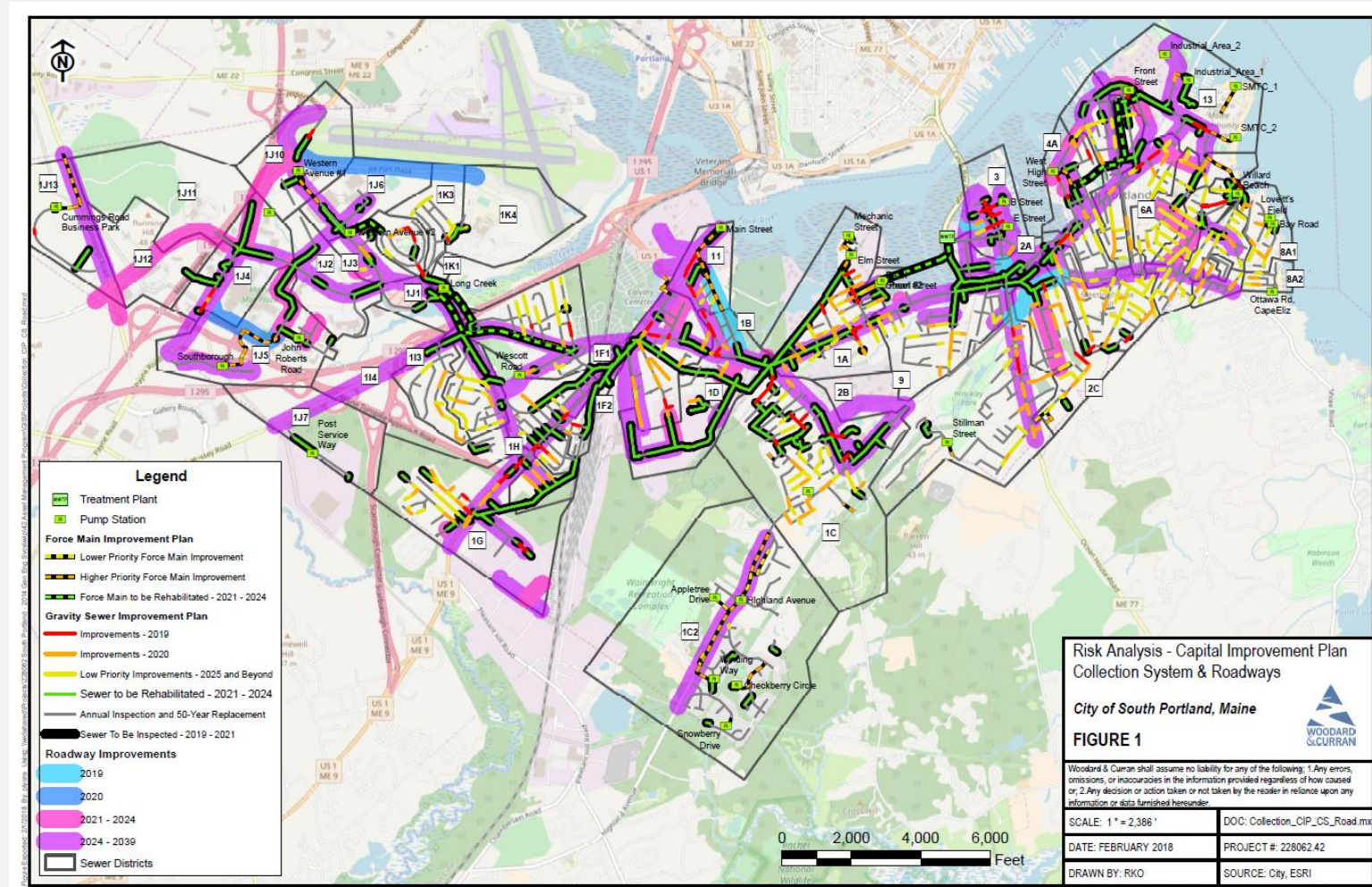
Vision: Be a self-sustaining and fiscally responsible entity providing effective solutions for public infrastructure needs.

Asset Management Plan Enhancement Elements

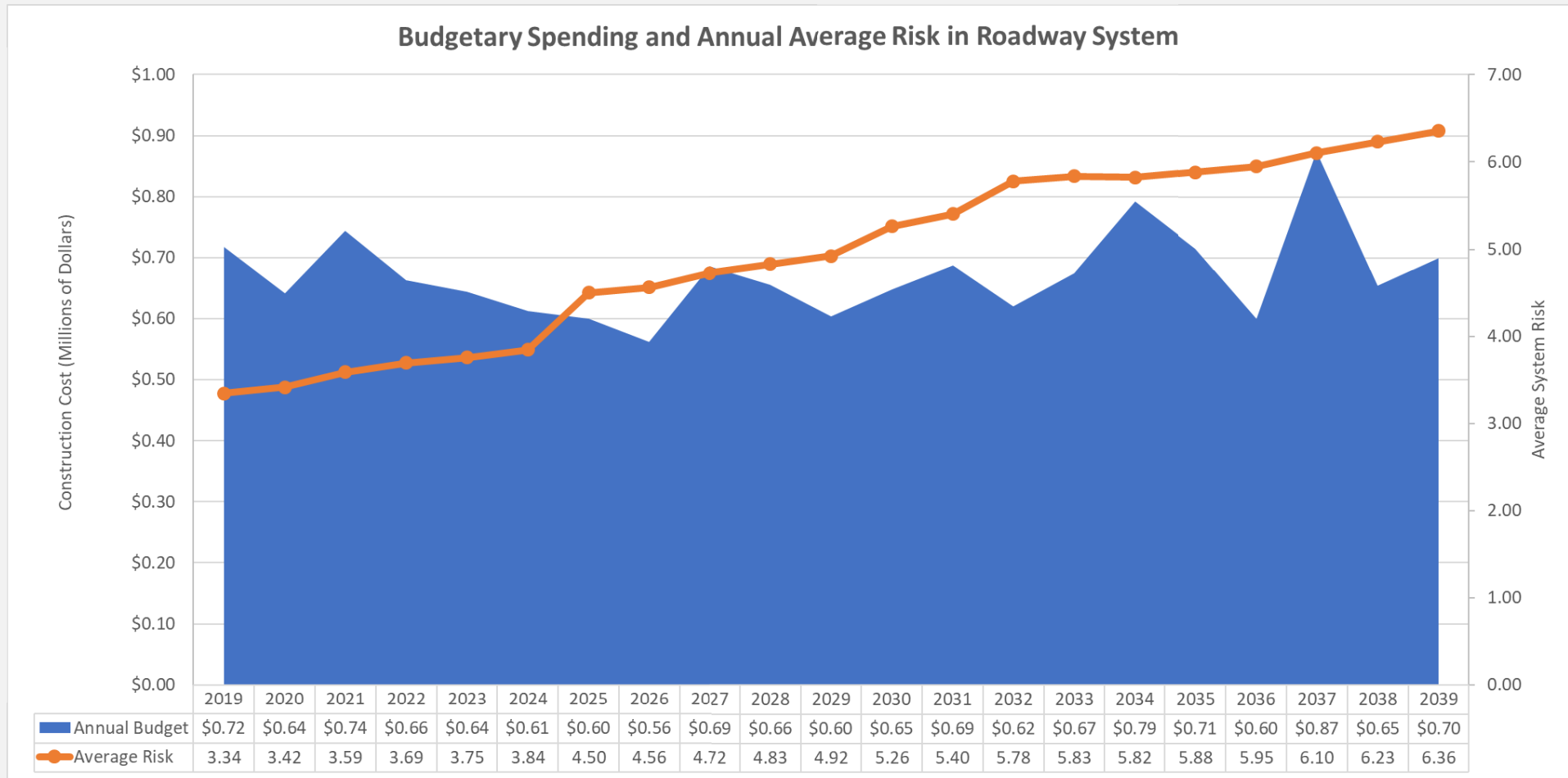
1. Establish CoF and LoF for Roadways and Sanitary Sewer Collection Assets
2. Data and practices gap assessment
3. Level of Service standards and goals
4. Defensible, data-driven capital planning
5. CMMS



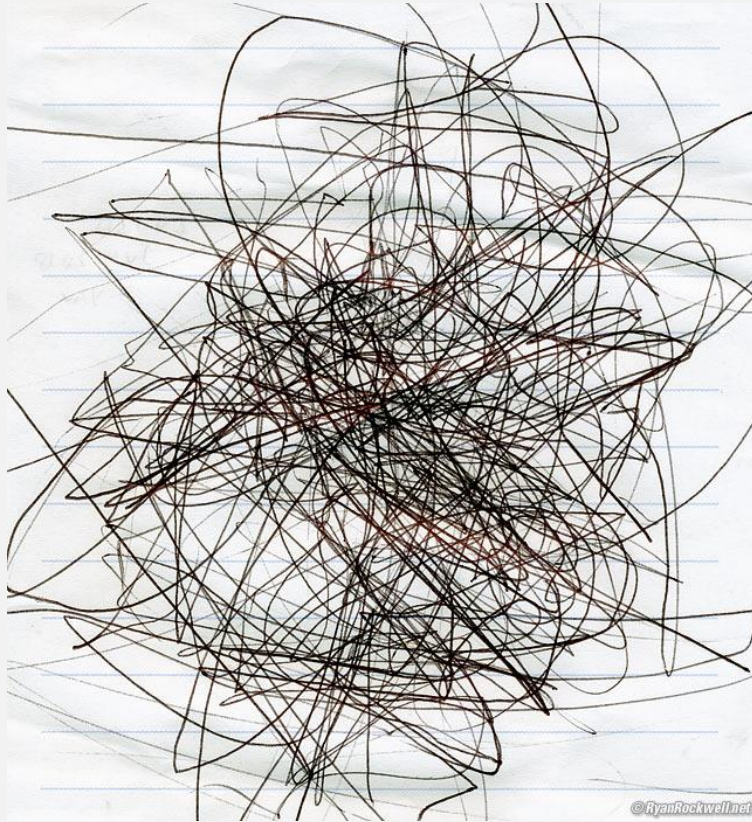
Roadway & Sewer Risk Analysis Results



This Data Tells a Story



Data Management Plan



This Photo by Unknown Author is licensed under CC BY-SA

- What data to collect
- Technology for collection and analysis
- Who manages - governance
- Data quality

Without it, run risk of not being able to see what the data are trying to tell you

Acknowledgements & Discussion

- City of Tavares, FL
 - Utilities Department - Brad Hayes, Director
- City of South Portland, ME
 - Water Resources Protection Department
 - Public Works Department
- Woodard & Curran
 - Bob Amaral
 - Megan McDevitt, P.E.



Winslow Homer, *Breezing Up (A Fair Wind)* 1873-76: This Photo by Unknown Author is licensed under CC BY-SA

Susan Guswa, P.E.
sguswa@woodardcurran.com