



Michael Dodson  
Landscape Architect  
CDM Smith

Mike Stuer  
Engineering Manager  
LRWU

# Decatur WAY... Water, Art, and You

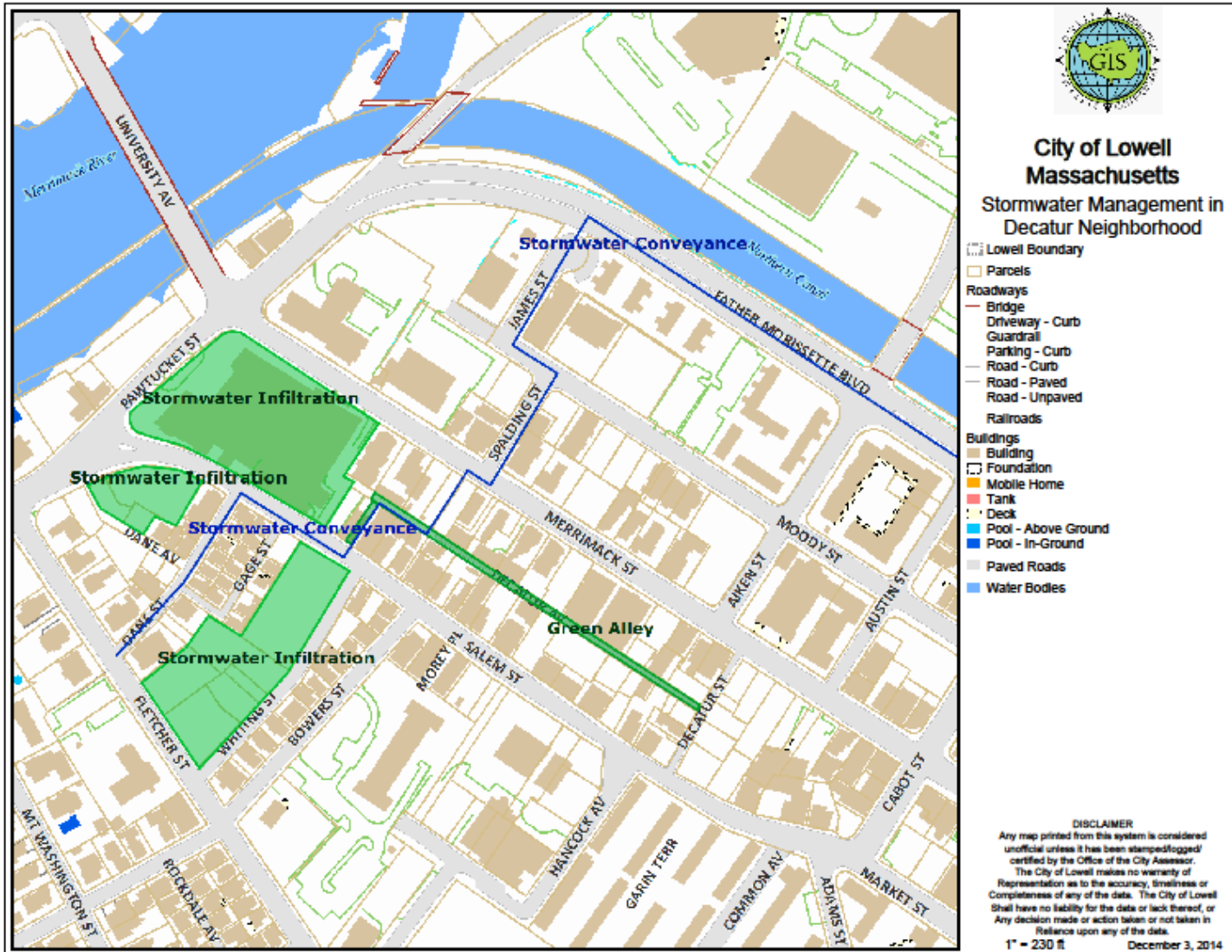
Lowell's Green Alley

January 25, 2017



**CDM  
Smith**

# Stormwater Conveyance in Decatur Neighborhood



# Before Photos



# Porous Pavements

- Porous Asphalt
- Precast Interlocking Permeable Pavers
- Cast-in-Place Pervious Concrete
- Precast Pervious Concrete



# Precast Pervious Concrete

## PROS

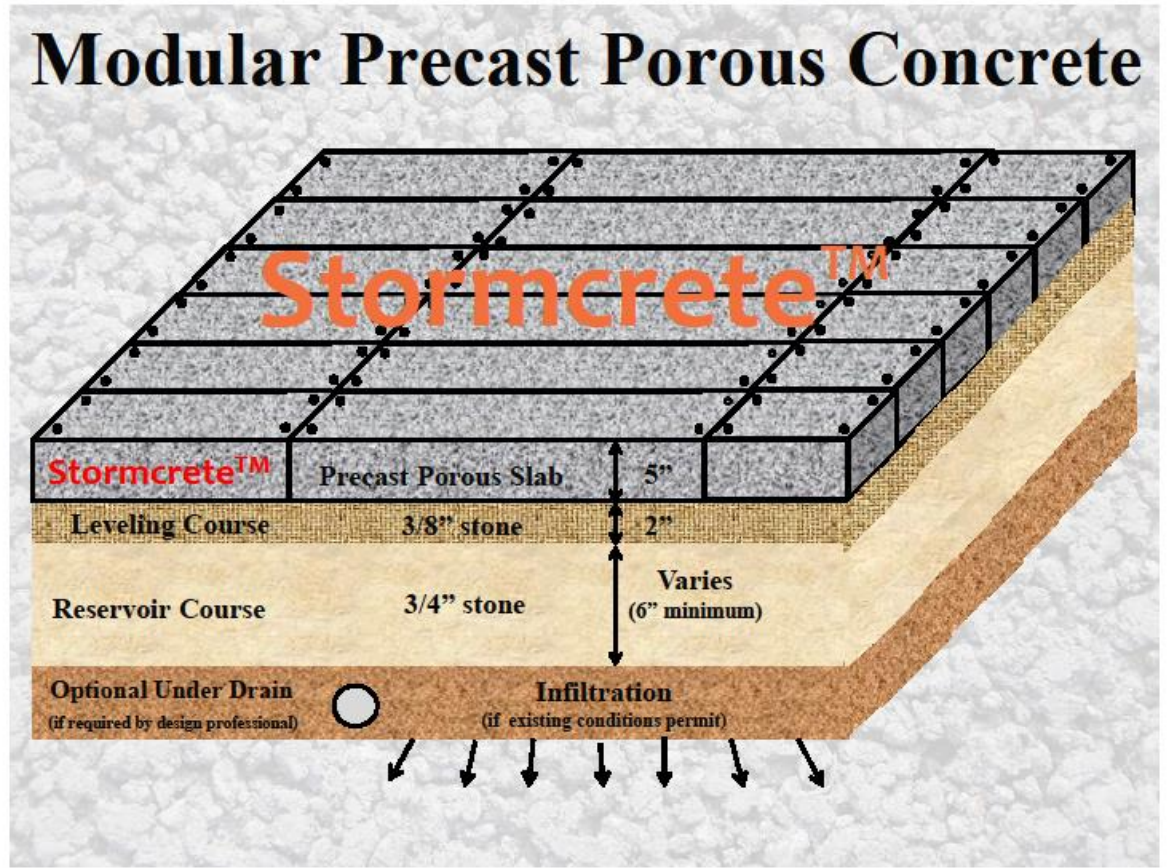
- Formed in a controlled environment
- Cleaning/replacing panels easier than cast-in-place pervious concrete
- Different standard size panels are available

## CONS

- Potentially more expensive



# Precast Pervious Concrete

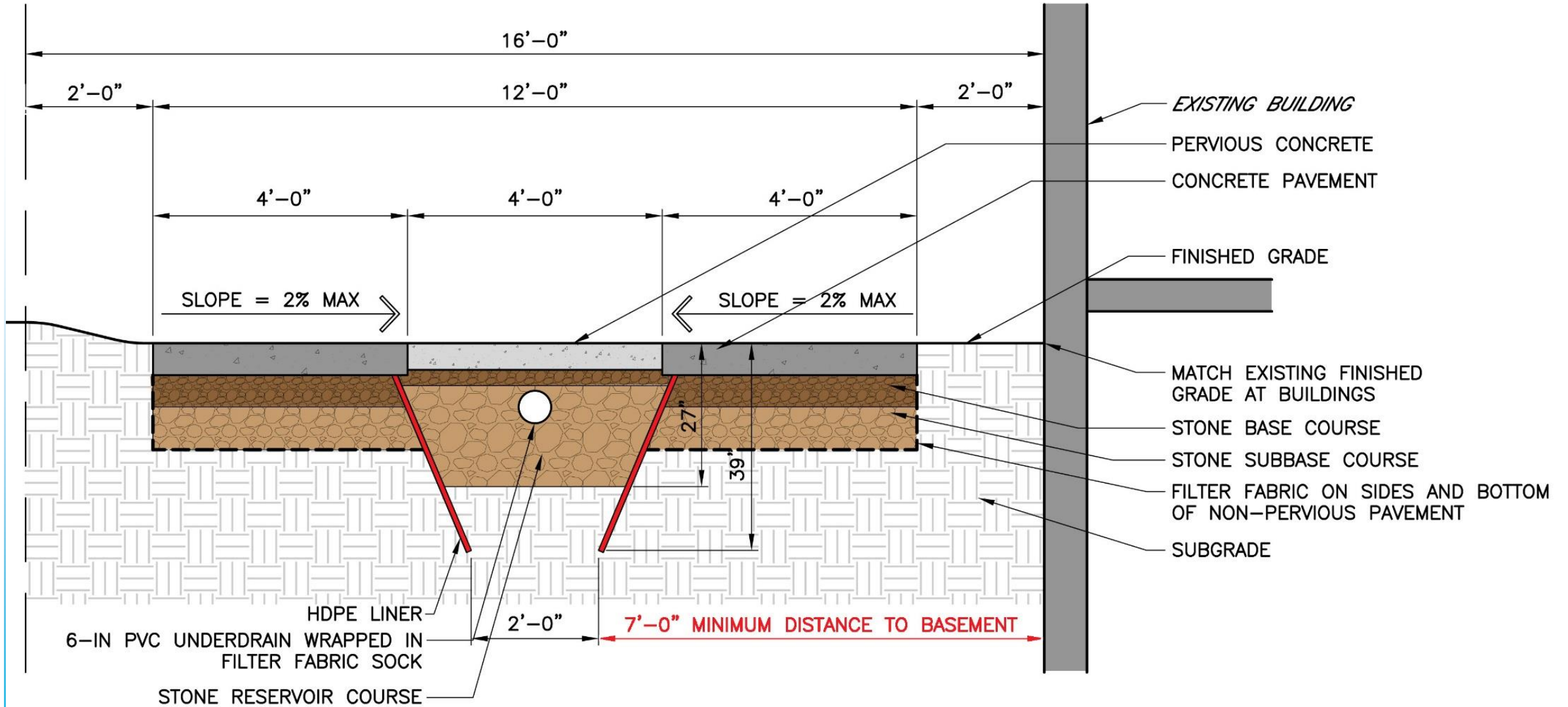


# Maintenance Requirements

- Inspect at least once per year to examine surface infiltration rates
- Vacuum as much as 2 to 4 times per year to remove solids and debris and keep voids open
- Power wash can be used to dislodge trapped particles
- Light salting during winter months is acceptable



# Typical Section

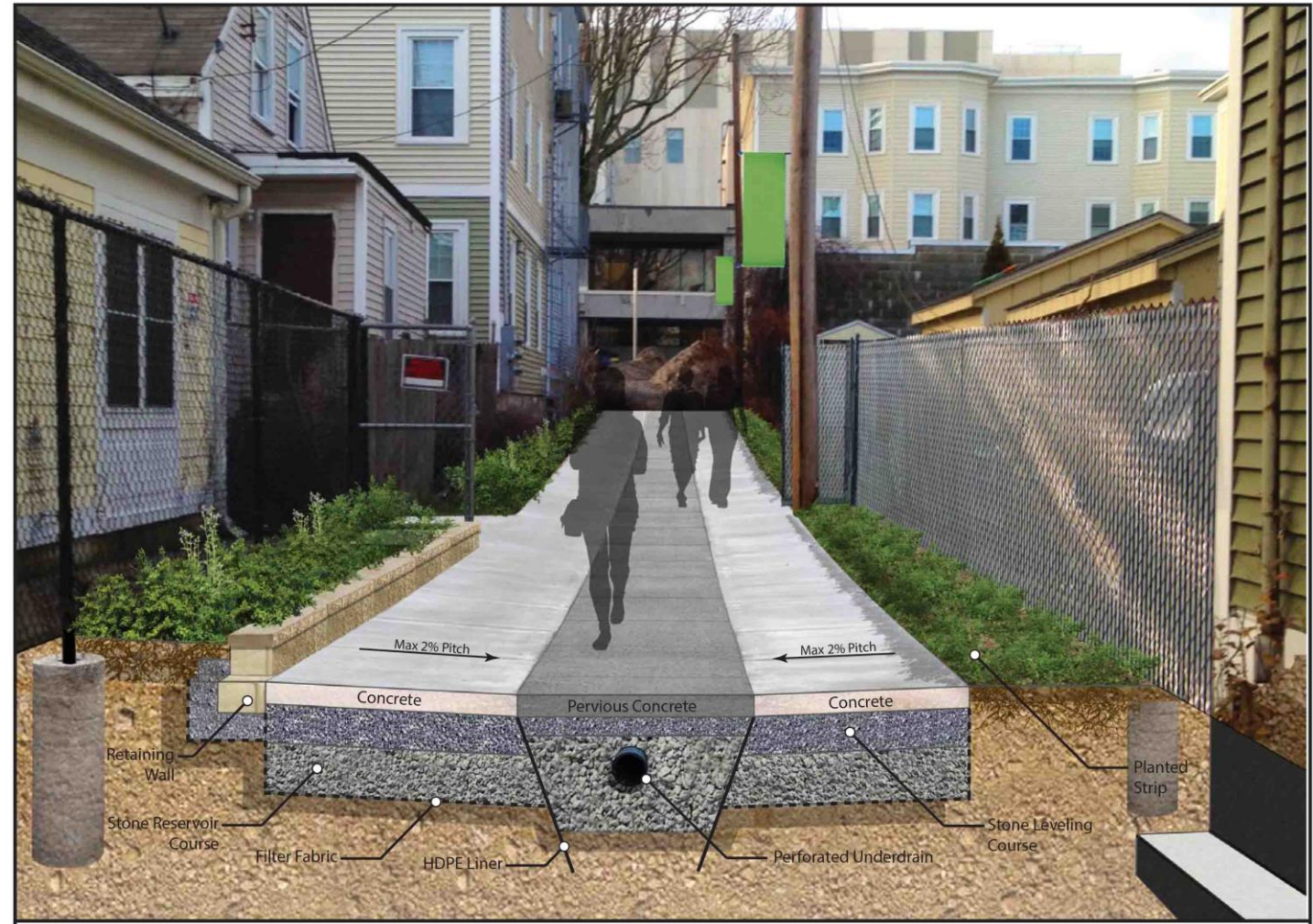




# Before Photo and After Concept

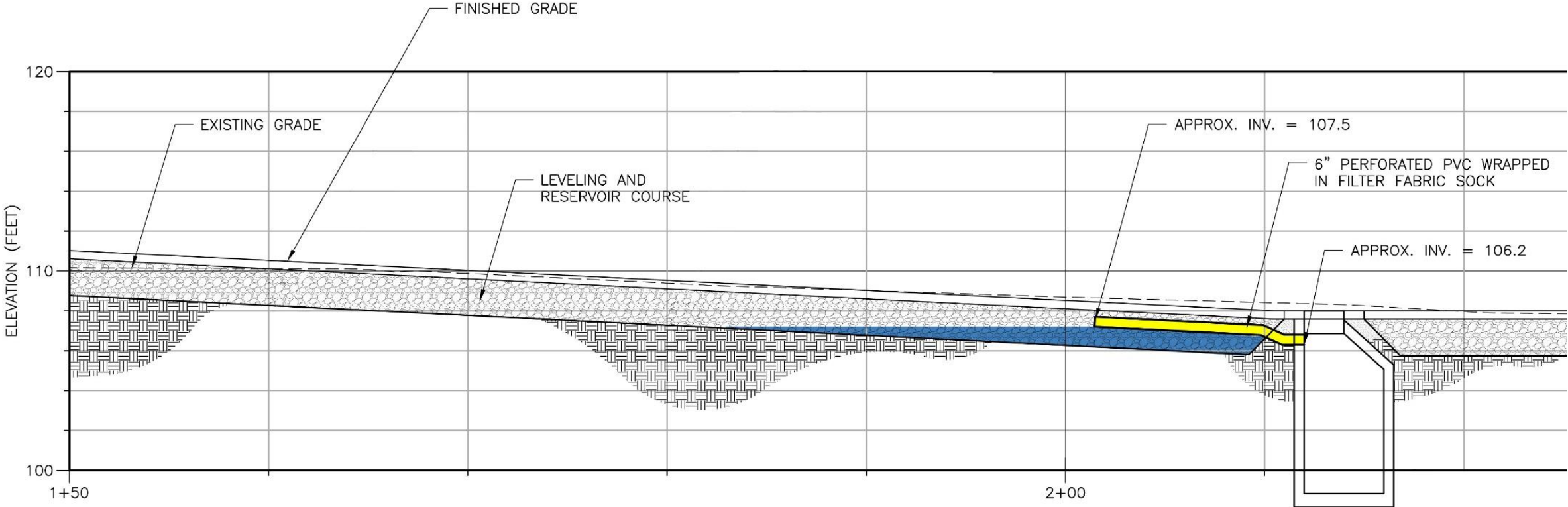


**CDM Smith** Decatur Green Alley - Existing Condition Lowell, Massachusetts February 2015

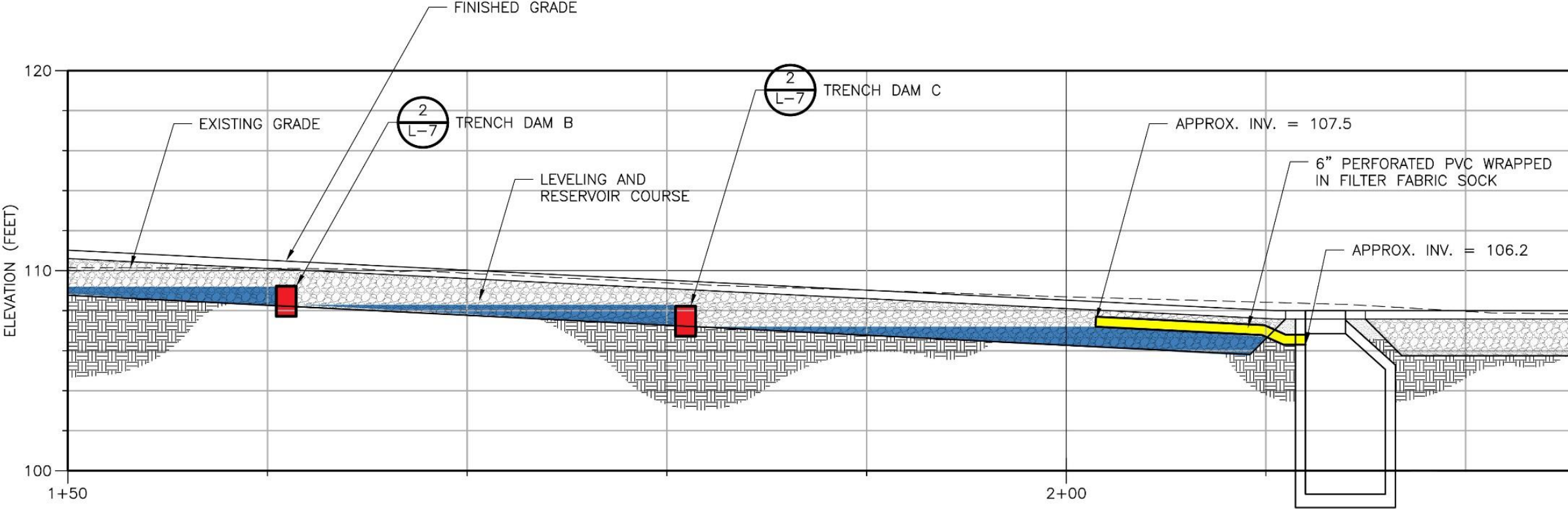


Decatur Green Alley - Proposed Condition Lowell, Massachusetts May 2016

# Reservoir without Impervious Dam



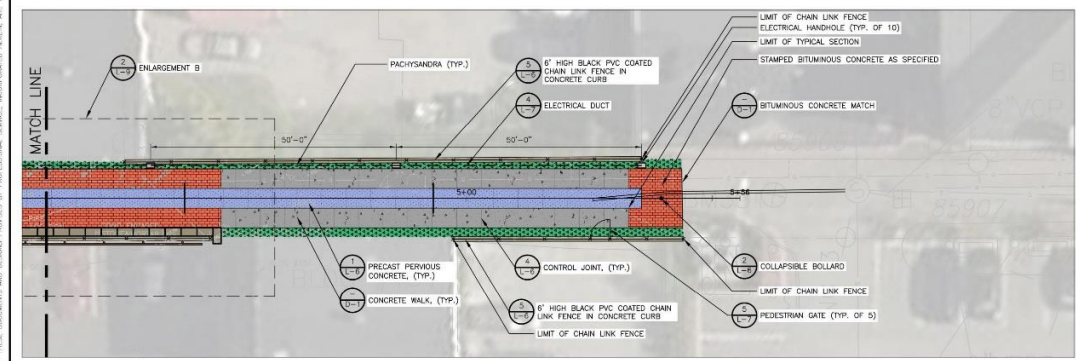
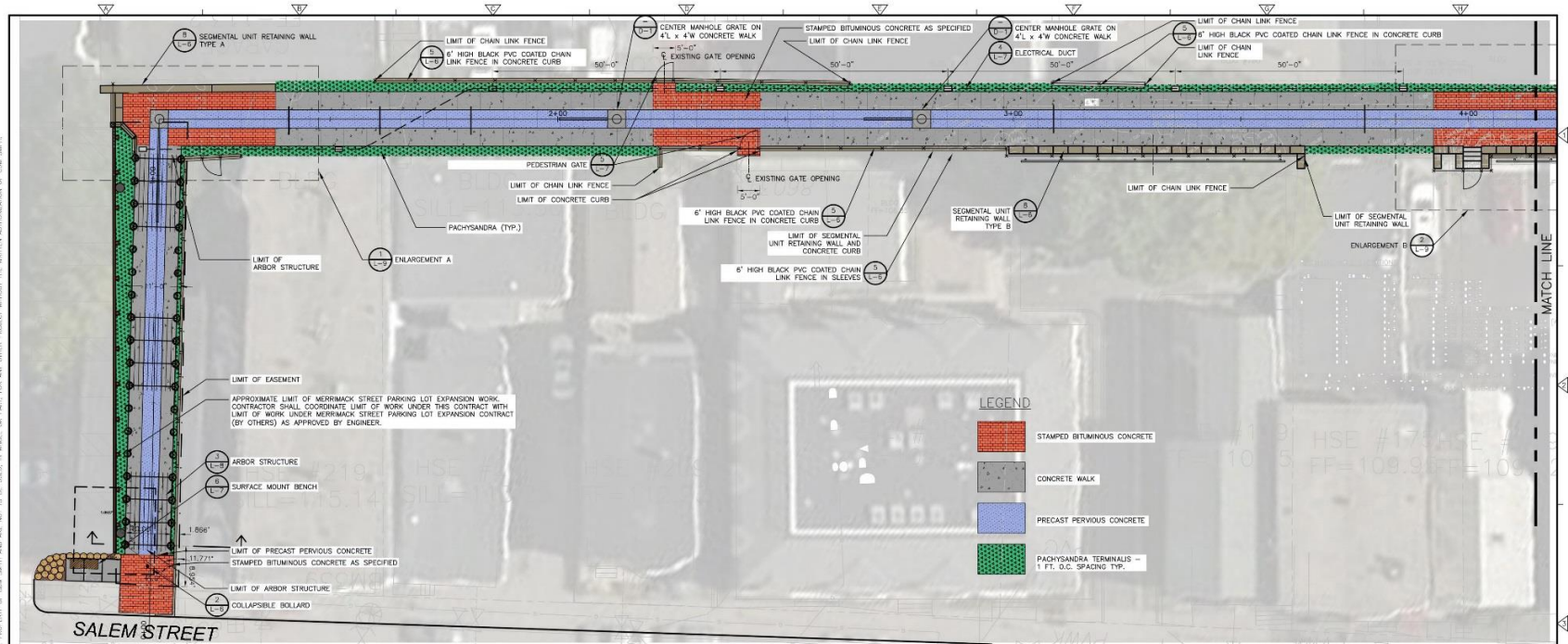
# Reservoir with Impervious Dam



# Construction

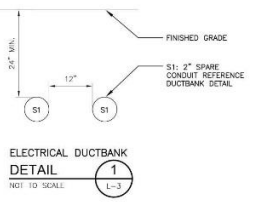


# Site Plan



### LAYOUT GENERAL NOTES:

- EXISTING SURVEY MONUMENTS OR CONTROL POINTS SHALL BE FLAGGED AND PROTECTED THROUGHOUT THE CONSTRUCTION CONTRACT UNLESS OTHERWISE APPROVED BY THE ENGINEER. DAMAGED OR MISSING MONUMENTS OR CONTROL POINTS SHALL BE REPLACED AT THE CONTRACTOR'S EXPENSE.
- PAVEMENT LIMITS, LOCATIONS OF STRUCTURES, BOLLARDS, FENCES, AND WALLS ARE APPROXIMATE. FINAL LOCATIONS SHALL BE DETERMINED IN THE FIELD AND APPROVED BY THE ENGINEER/LANDSCAPE ARCHITECT AFTER STAKING BY THE CONTRACTOR BASED ON ACTUAL SITE CONDITIONS.
- AREAS DISTURBED BY CONSTRUCTION ACTIVITIES AND NOT COVERED WITH BITUMINOUS CONCRETE, PRECAST PERVIOUS CONCRETE, CONCRETE WALK, OR RETAINING WALLS SHALL RECEIVE 6" LAYER LOAM AND 2" LAYER MULCH AS SPECIFIED.
- DIMENSIONS ARE TO FACE OF WALL, EDGE OF PAVEMENT, OR TO CENTERLINES UNLESS OTHERWISE SHOWN ON THE DRAWING.



| REV. | DATE | BY | CHKD. | REMARKS |
|------|------|----|-------|---------|
|      |      |    |       |         |
|      |      |    |       |         |
|      |      |    |       |         |
|      |      |    |       |         |

DESIGNED BY: M. BOSEDO  
 DRAWN BY: J. OROZCO  
 SHEET CHECKED BY: J. OROZCO  
 PROJECT CHIEF: J. OROZCO  
 APPROVED BY: M. BOSEDO  
 DATE: APRIL 2015

**CDM Smith**  
 875 N. Common St.  
 Lowell, MA 01852  
 TEL: 978.222.6900

LOWELL REGIONAL WASTEWATER UTILITY  
 LOWELL, MASSACHUSETTS  
 DECATUR WEST STORMWATER MANAGEMENT AND  
 MARGINAL SEWER RELIEF PIPE

DECATUR WAY  
 SITE LAYOUT AND MATERIALS PLAN

PROJECT NO. 6553-107165  
 FILE NAME: 100301PL.DWG  
 SHEET NO.  
 L-3  
 6553-88926

# Stamped Bituminous Concrete



# Aiken Street Bridge



# Arbor Location: Before Photo

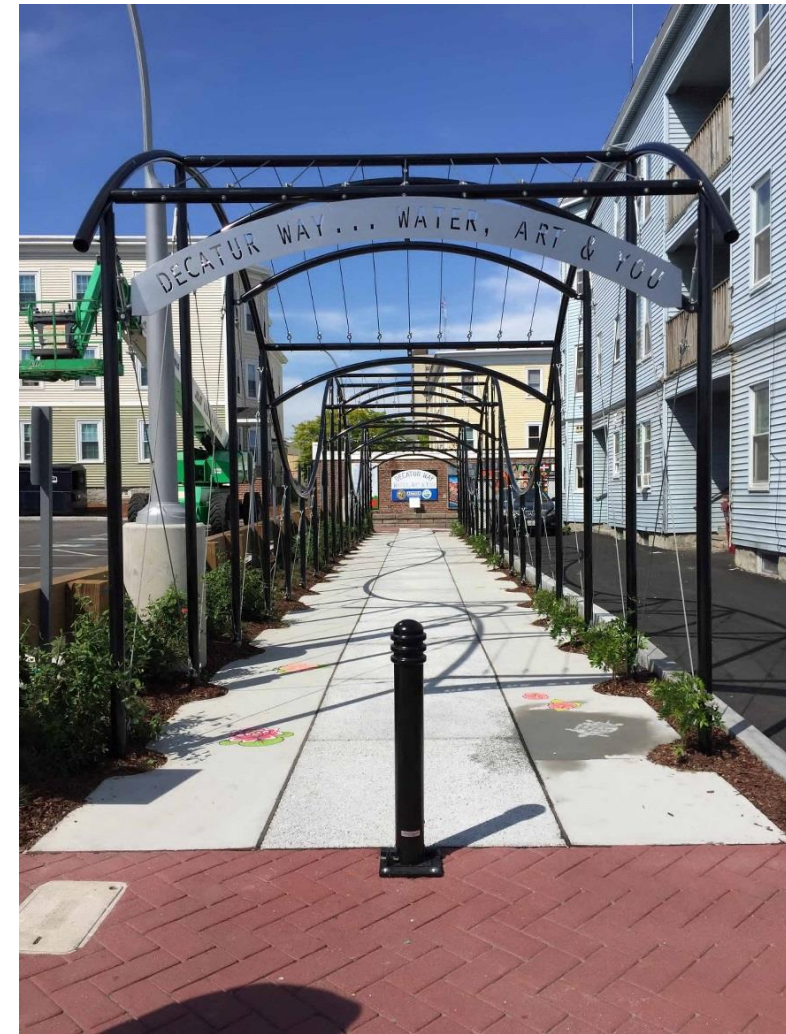




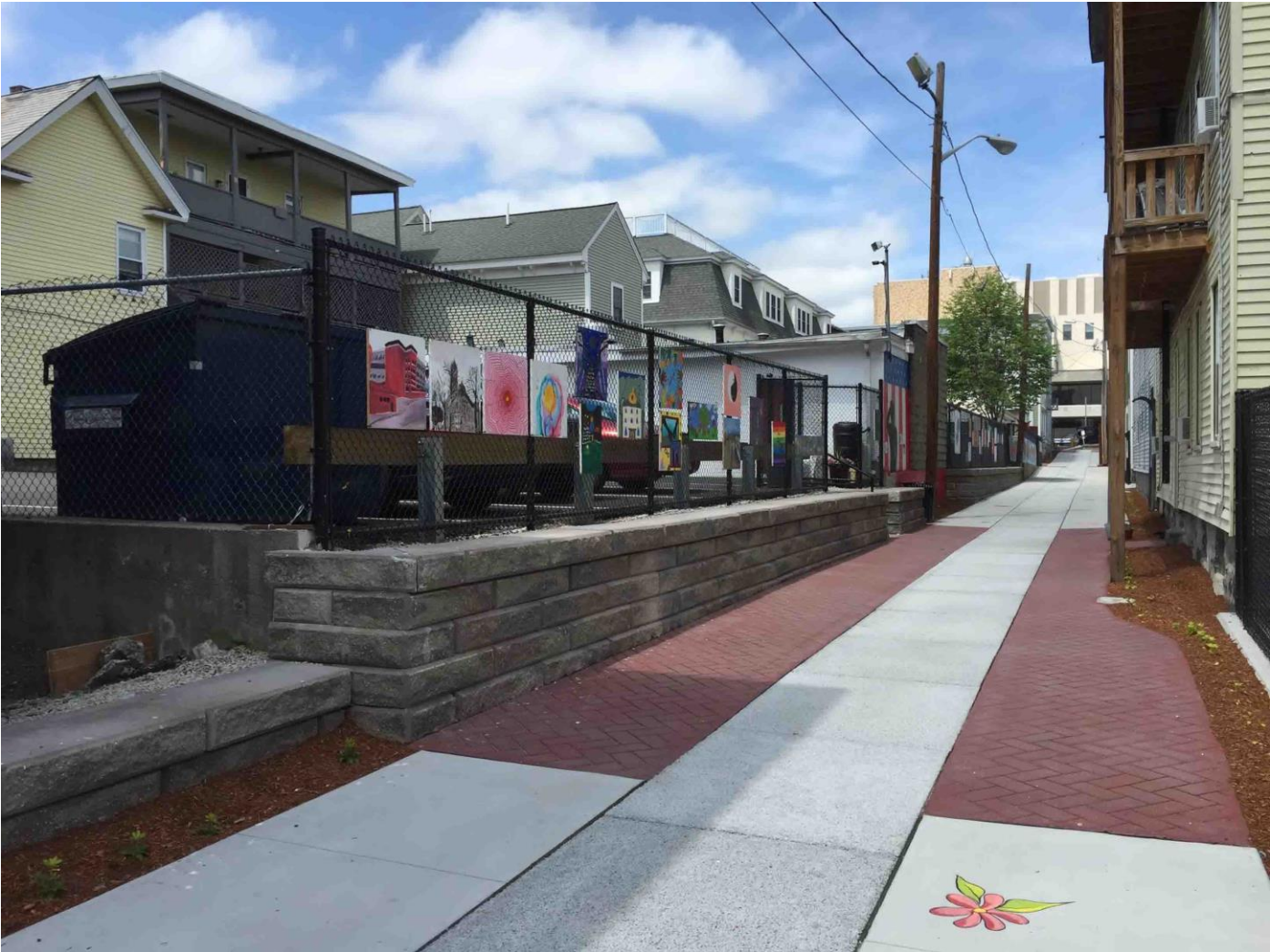
# Completed Arbor Structure



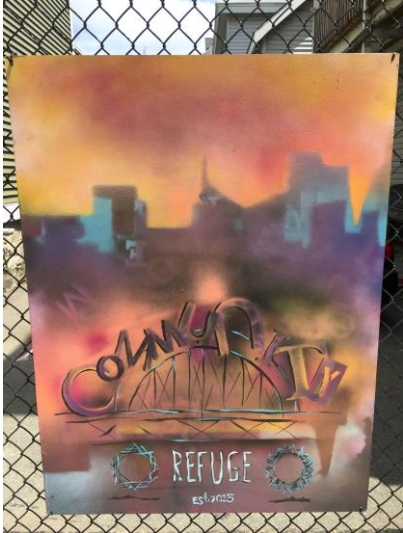
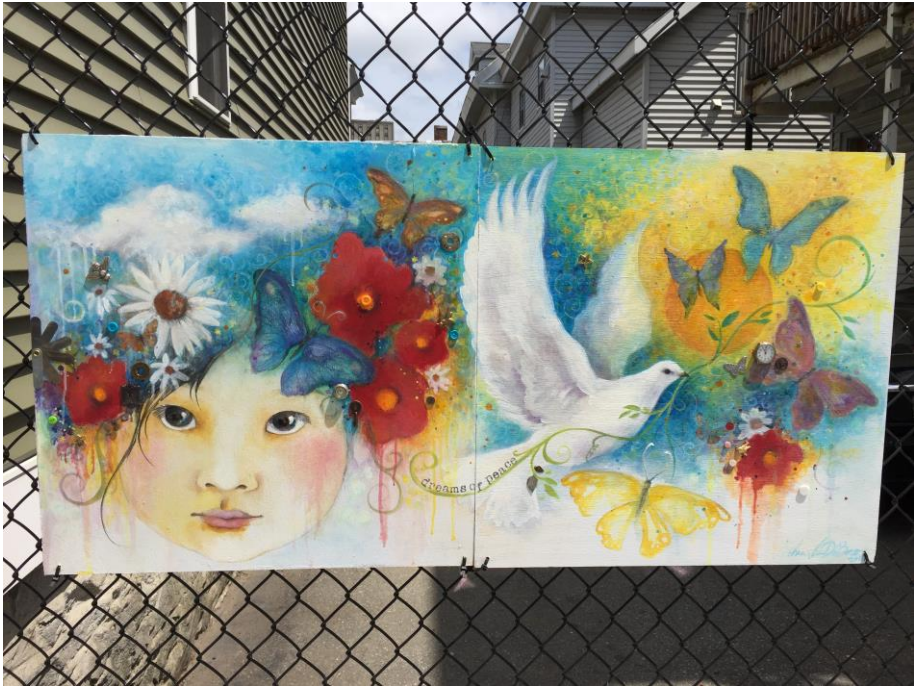
# Completed Arbor Structure



# Decatur WAY: Public Art



# Decatur WAY: Public Art



# Decatur WAY: Public Art



# Decatur WAY: Public Art



# Decatur WAY: Public Art



# Community Improvements & Environmental Protection





# Decatur WAY... Water, Art, & You



# Contact us!



**Michael Dodson**

CDM Smith

603-222-8311

[dodsonma@cdmsmith.com](mailto:dodsonma@cdmsmith.com)

**Mike Stuer**

City of Lowell, MA

978-674-1606

[mstuer@lowellma.gov](mailto:mstuer@lowellma.gov)

Find more insights through our water partnership  
at [cdmsmith.com/water](http://cdmsmith.com/water) and [@CDMSmith](https://twitter.com/CDMSmith)