

COBBS CREEK RESTORATION

FLOODPLAIN WETLANDS AND GREEN STORMWATER INFRASTRUCTURE IMPROVEMENTS

Philadelphia Water Department

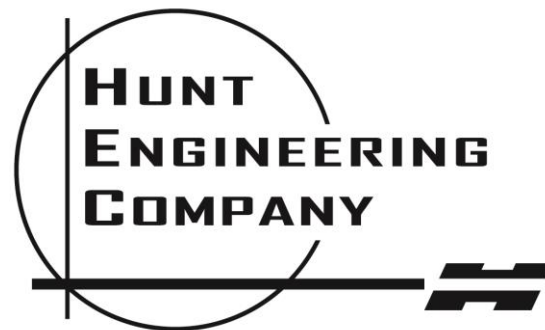
New England Water Environment Association
Watershed Management/Stormwater Committee Conference
October 16, 2014



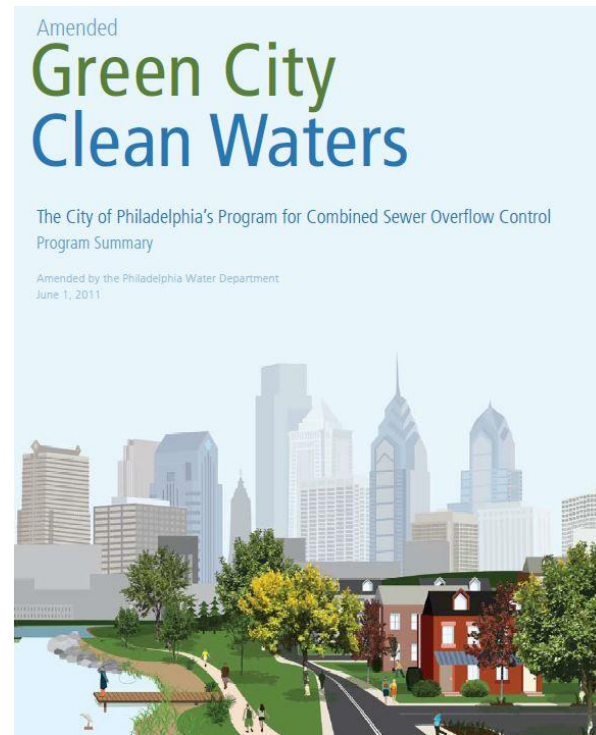
PHILADELPHIA
**PARKS &
RECREATION**



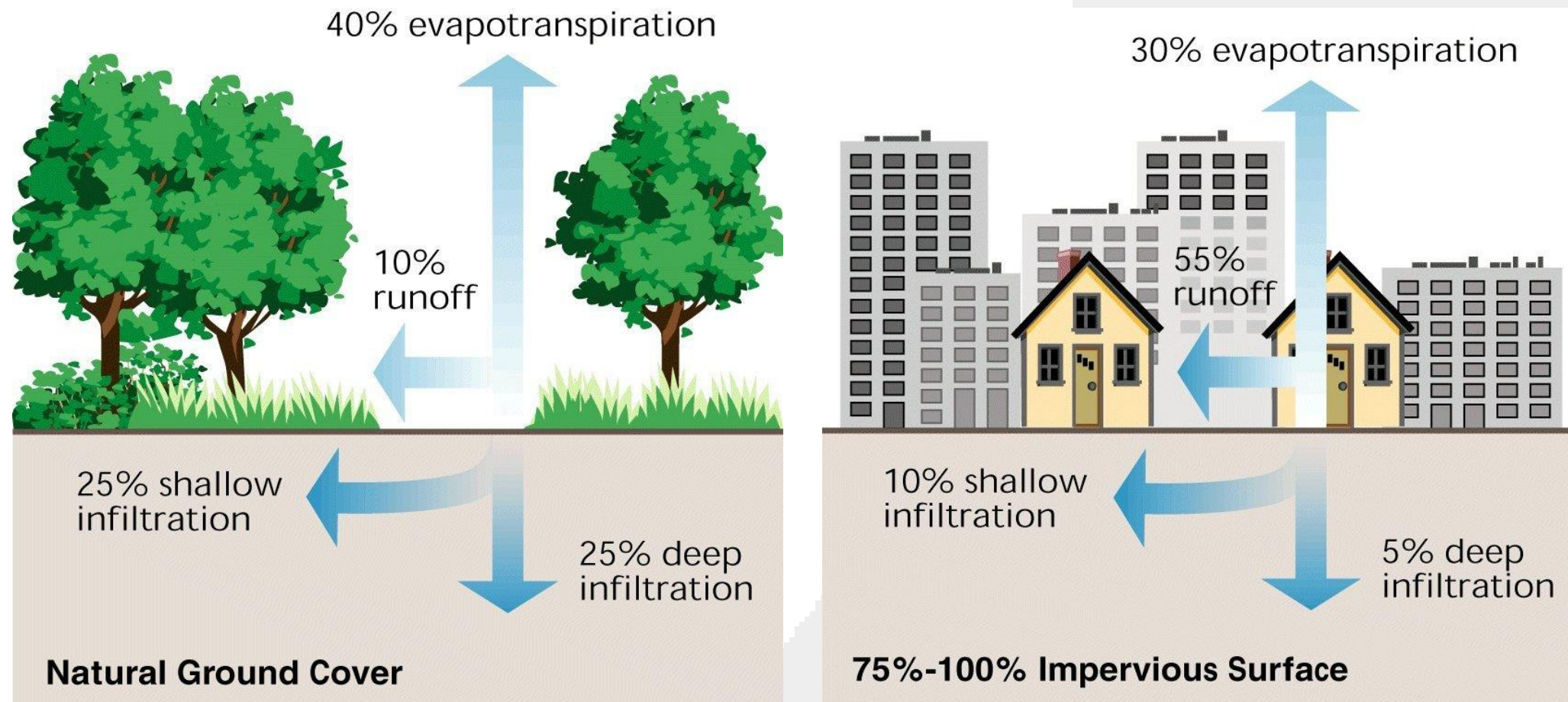
Dewberry®



Rodriguez
Consulting LLC
ENGINEERS



Impervious Cover



50% infiltration

vs. 15% infiltration



Living Streamside

Townhouses/RowHomes

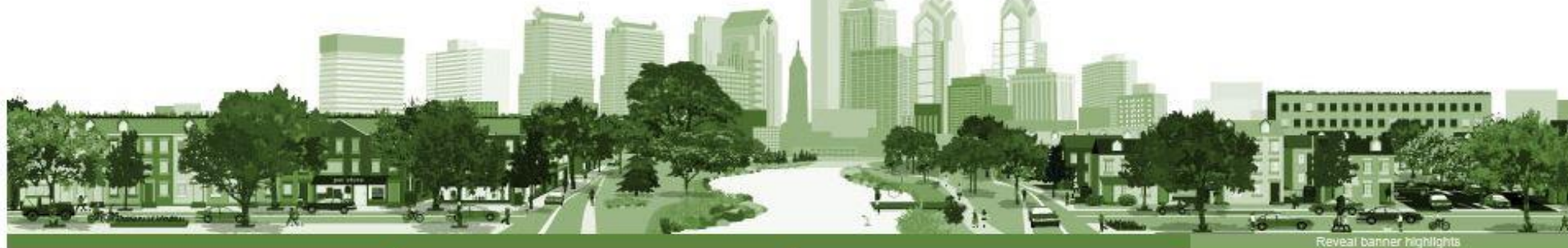
Guide to Designing your Property and Protecting our Watershed



BACKYARD BUFFER PROGRAM

This guide is intended to help you learn how to protect our streams and rivers with a well thought-out design and a list of projects that you may implement on your property.





Reveal banner highlights

[YOUR WATERSHED](#)[WATERSHED ISSUES](#)[WHAT WE'RE DOING](#)[WHAT'S IN IT FOR YOU](#)[Events](#)[Residents](#)[Clean Stormwater Tips](#)[Automobile Maintenance](#)[Backyard Stream Buffer](#)[Lawn & Garden Care](#)[Pet Waste](#)[Winter Ice Removal](#)[Green Home Projects](#)[Container Gardens](#)[Depave Your Yard](#)[Downspout Planters](#)[Dry Well](#)[Green Roofs](#)[Porous Paving](#)[Rain Barrel Workshops](#)[Rain Gardens](#)[Trees](#)[Wildflower Meadow](#)[Rain Check](#)[Sign Up](#)

Rain Check

Rain Check is a Philadelphia Water Department program that helps residents manage stormwater and beautify their homes.



Start Managing Stormwater



1. Sign up for a free stormwater property assessment.

A specially trained assessor will evaluate the outside of your home to see what stormwater tools could work on your property.

2. Choose a stormwater tool that works for your home.

Rain Check participants can choose from four stormwater tools plus one yard tree. Based on the assessor's recommendations, you choose what you want on your property.

3. Install your tool at a fraction of the total cost.

The Philadelphia Water Department will help pay for the cost of installing your tool. Learn more about the tools and approximate costs on the Stormwater Tools page.

About Rain Check



Tool	Approximate Total Cost	PWD Pays	Participant pays the remainder
Downspout Planters	About \$975.00	\$875.00	
Rain Gardens	About \$17/sq. ft.	\$16 / sq. ft. or \$2,000 (whichever is lower)	
De-paving	About \$10/sq. ft.	\$8/ sq. ft. or \$2,000 (whichever is lower)	
Porous-paving (including the removal of existing surface)	About \$30/sq. ft.	\$15/ sq. ft. or \$2,000 (whichever is lower)	
Yard Tree	About \$150	\$100	



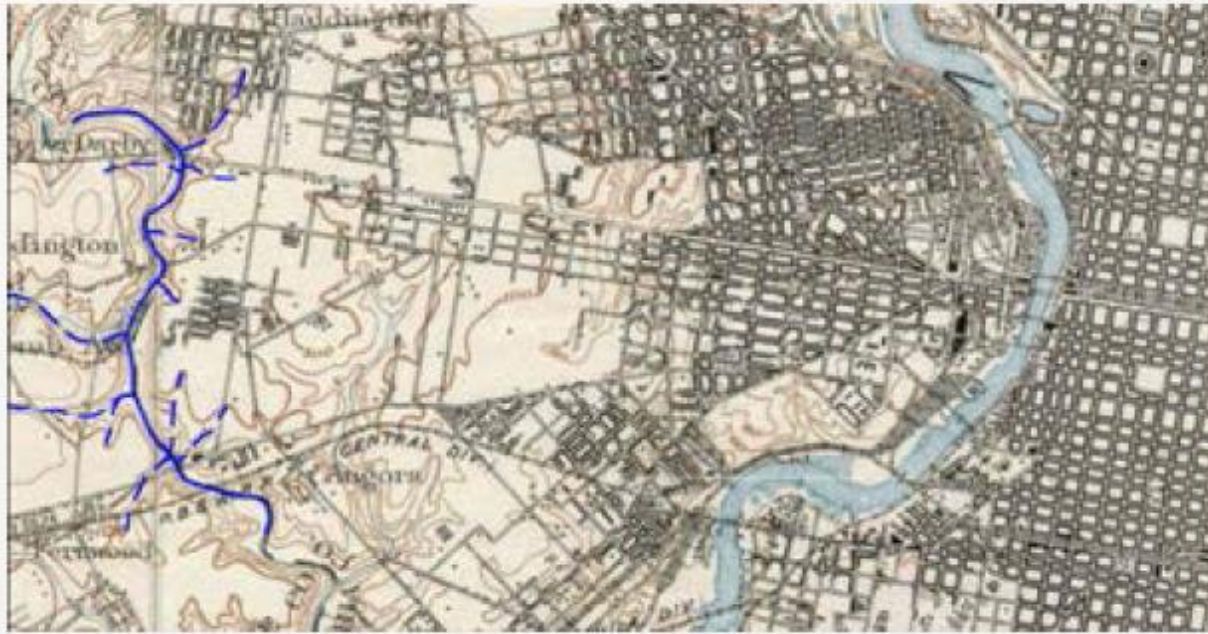
Philadelphia's Historic Streams



Philadelphia's Remaining Streams



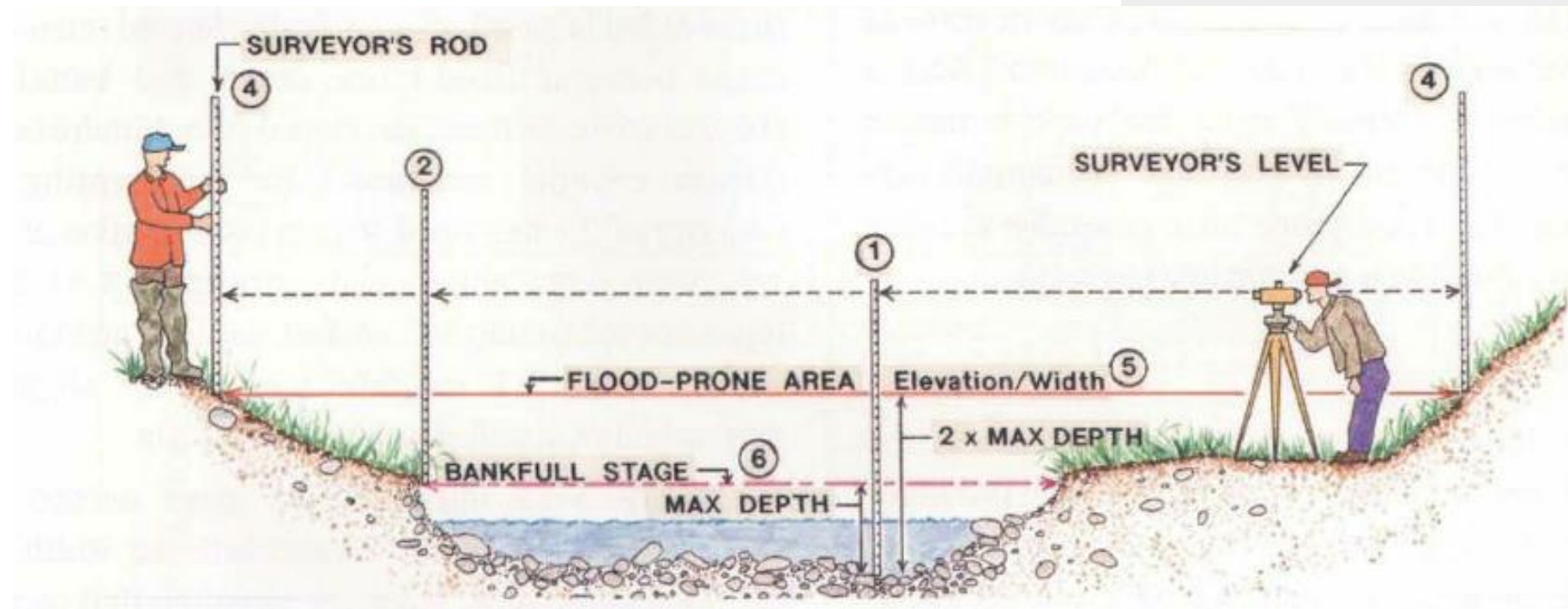
1890–1910 USGS Map



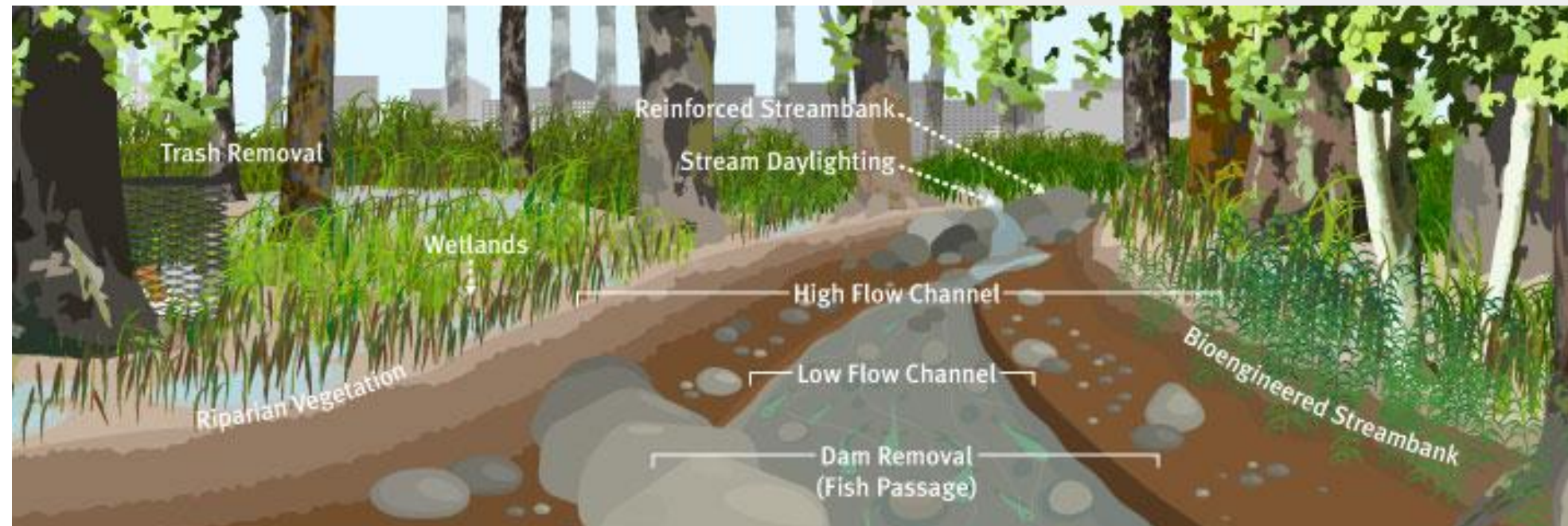
2005 PASDA Aerial Photo



Natural Stream Channel Design

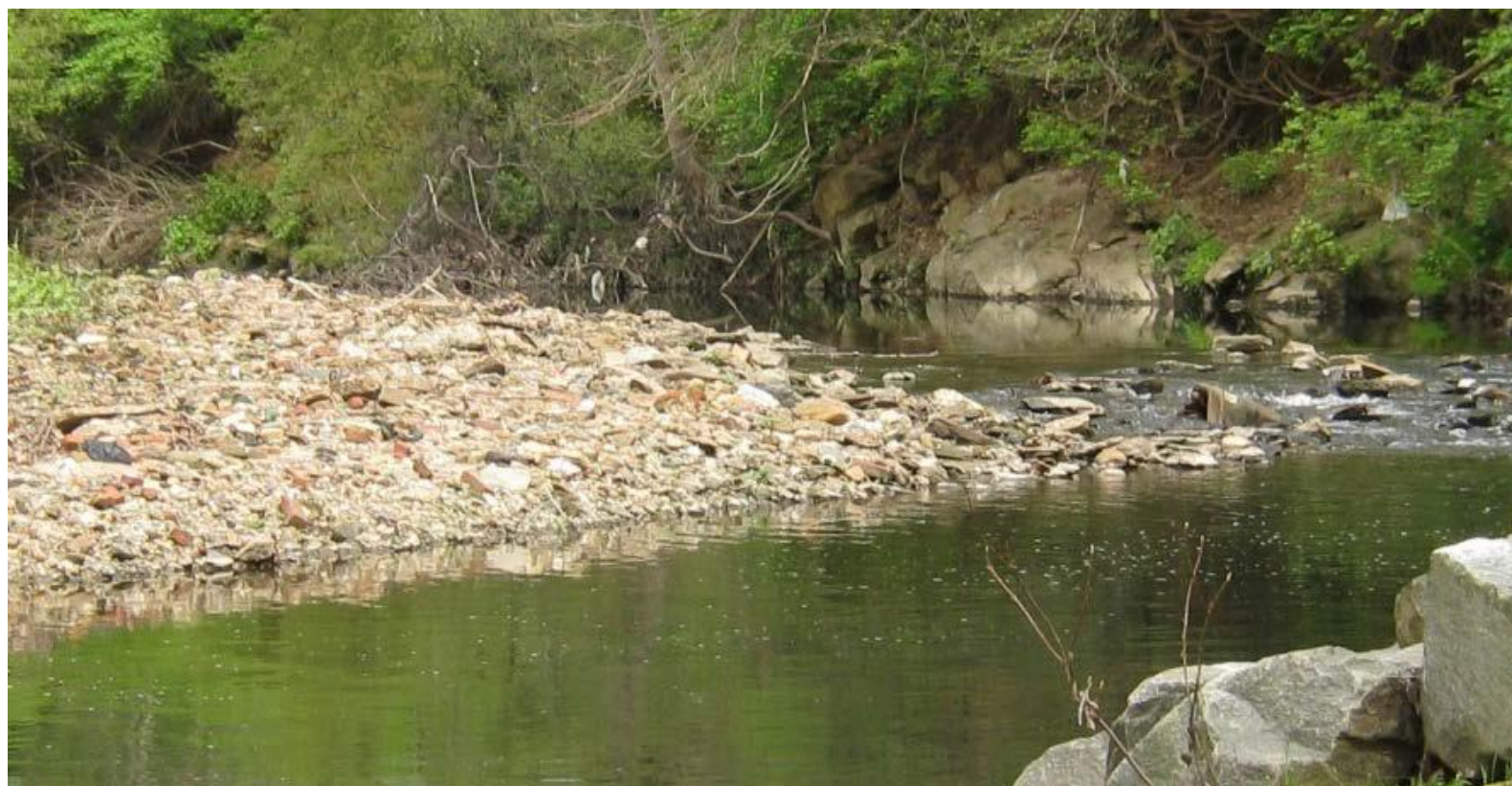


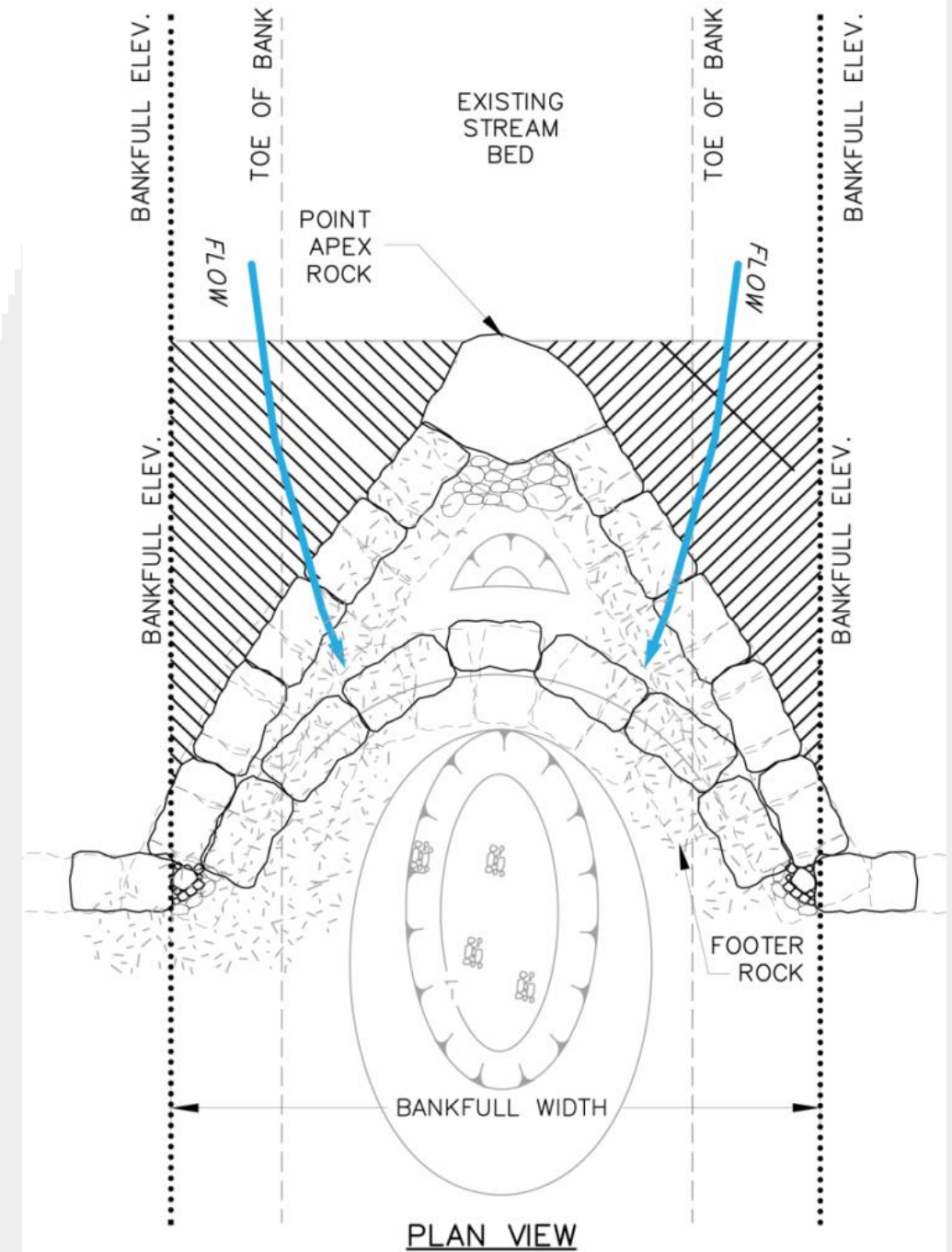
Source: Natural Resources Conservation Service, Engineering Field Handbook

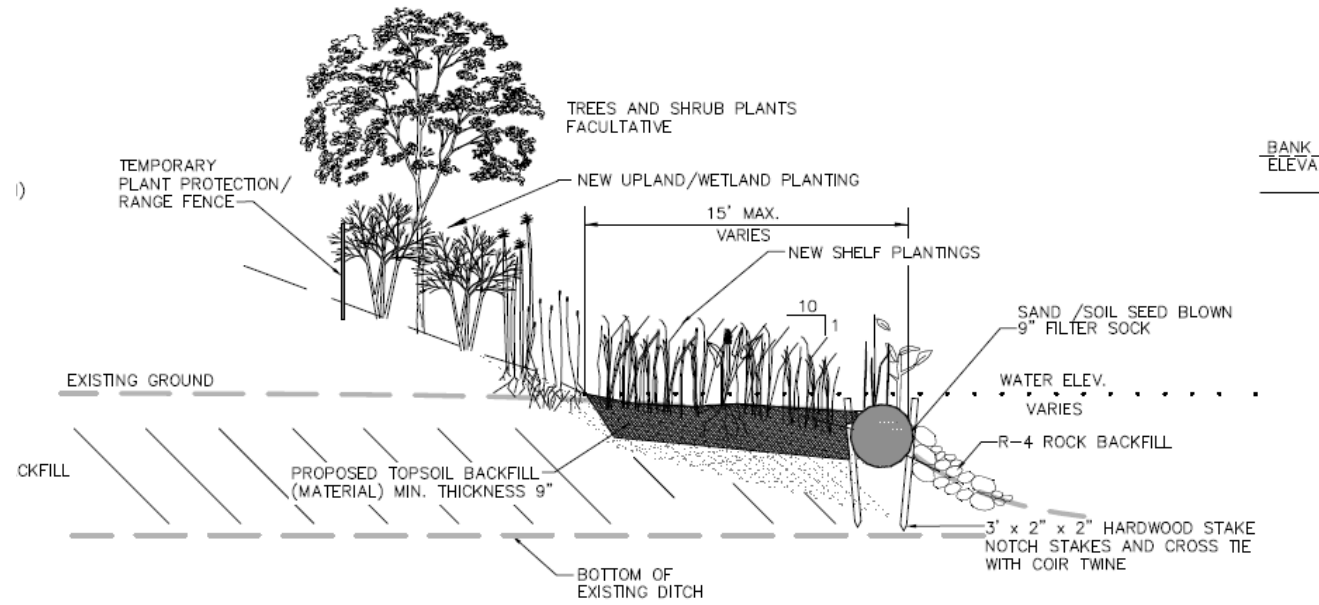


Source: Philadelphia Water Department

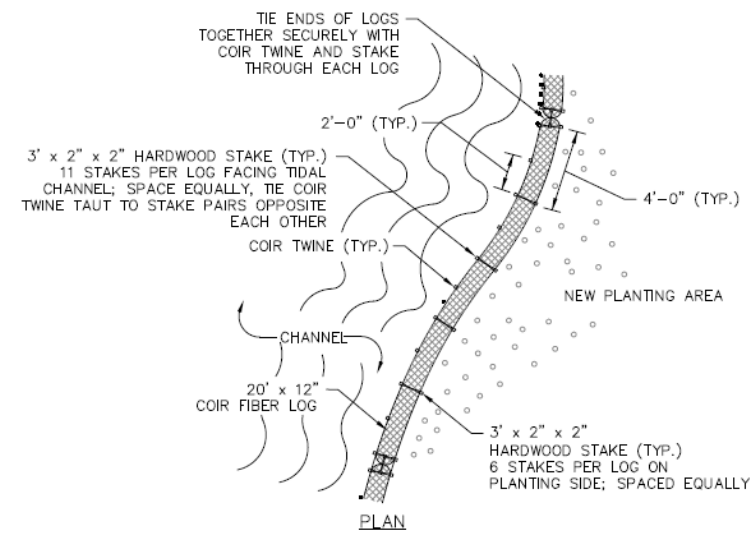
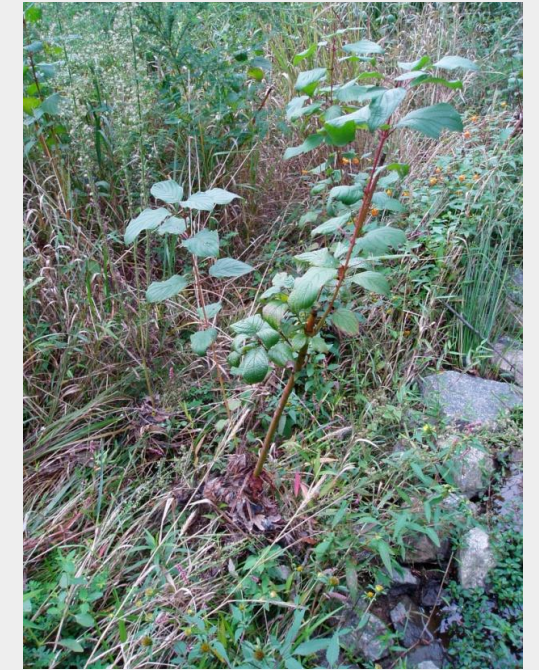








IS-3c **FILTER SOCK TOE/VEGETATED BANKFULL /SLIDE DITCH/ CHANNEL BACKFILL**
N.T.S.



NOTE:

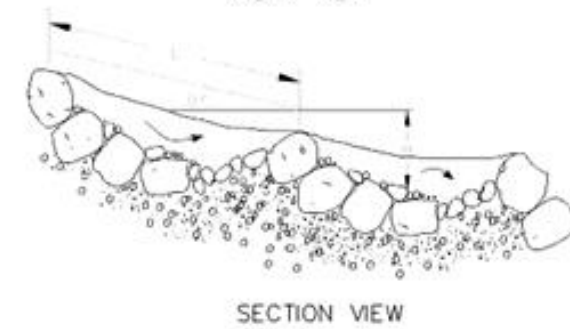
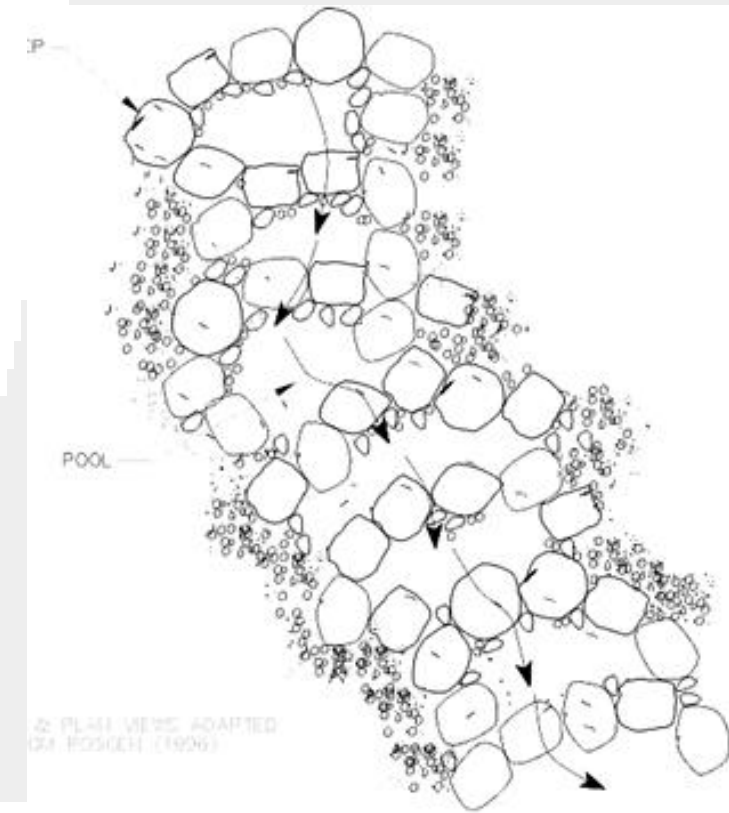
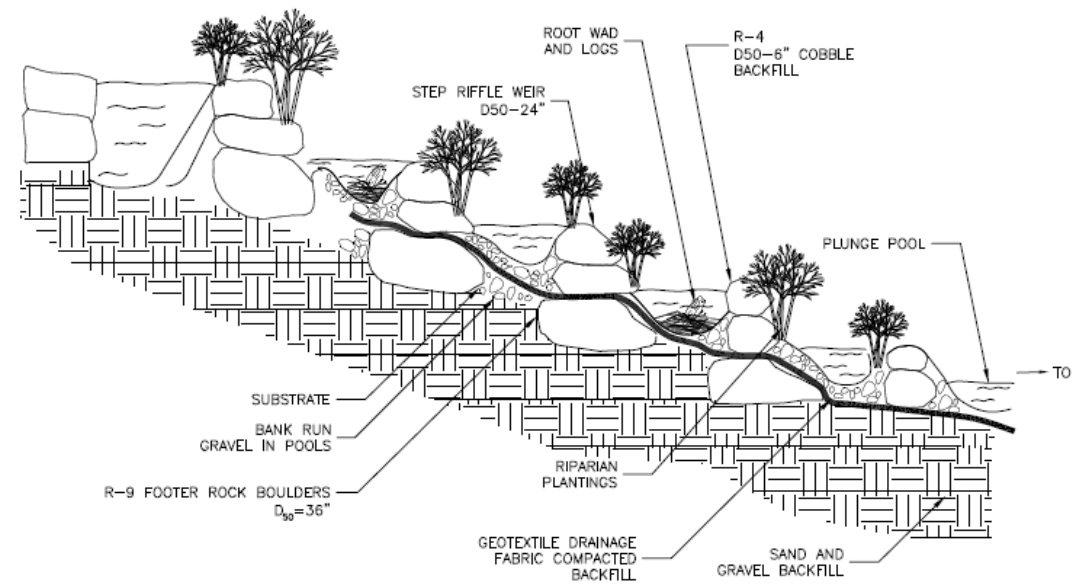
STAKES 1 1/2' TO 2' IN GROUND

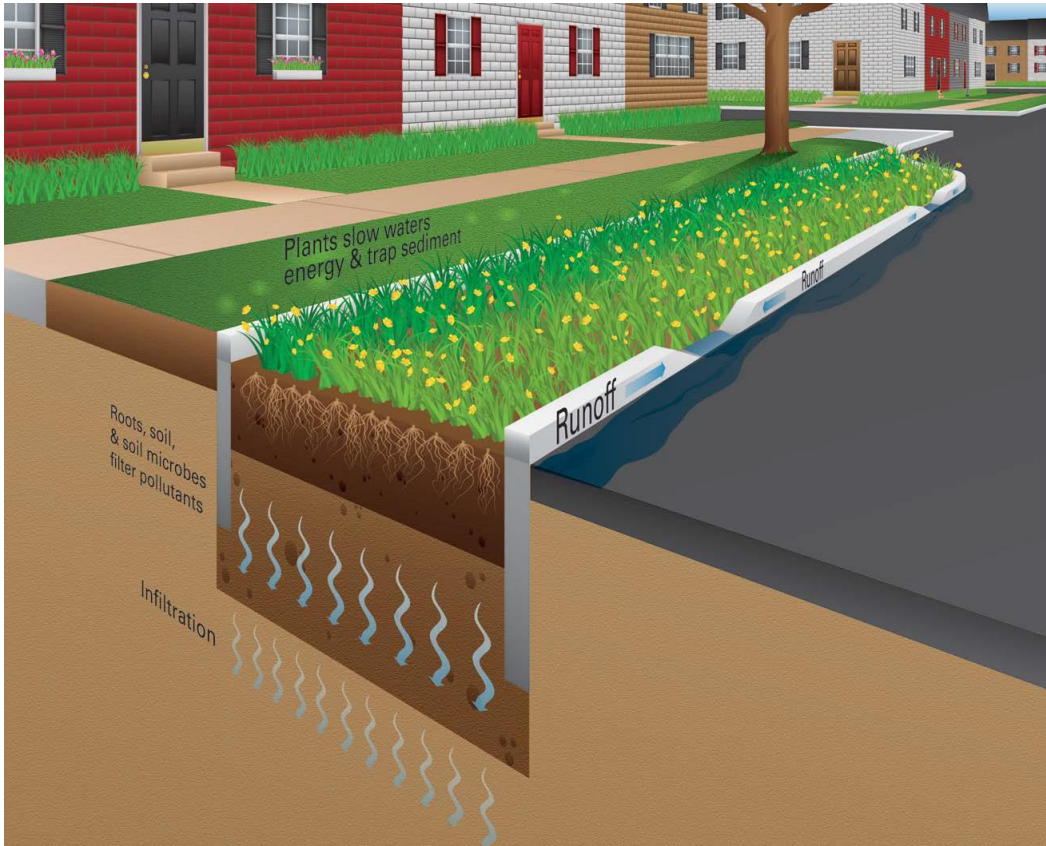




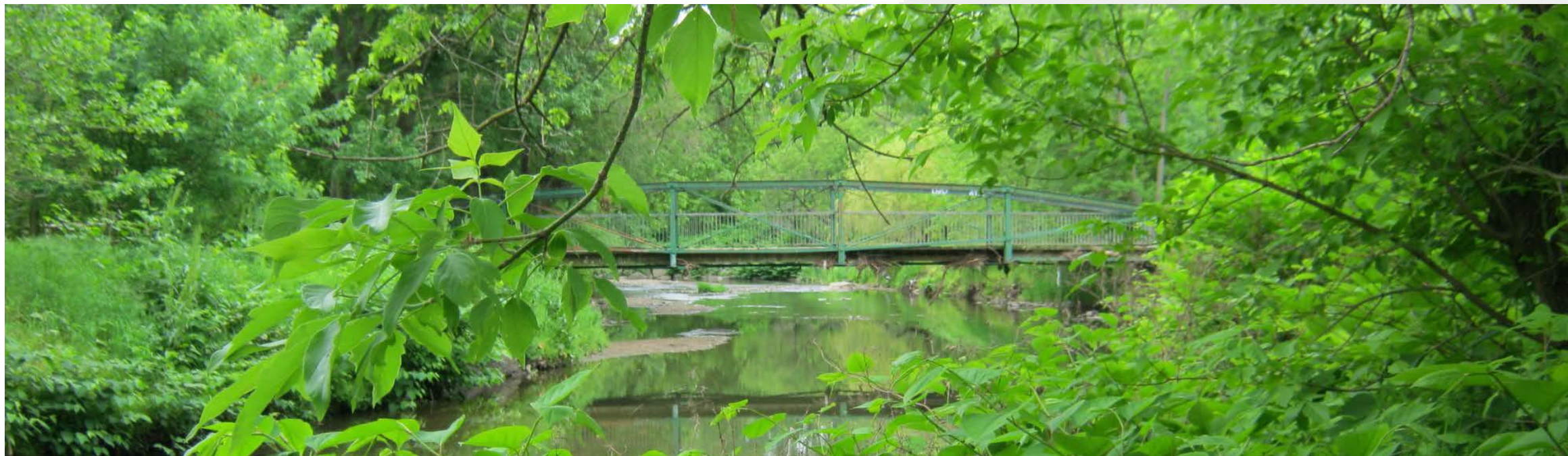


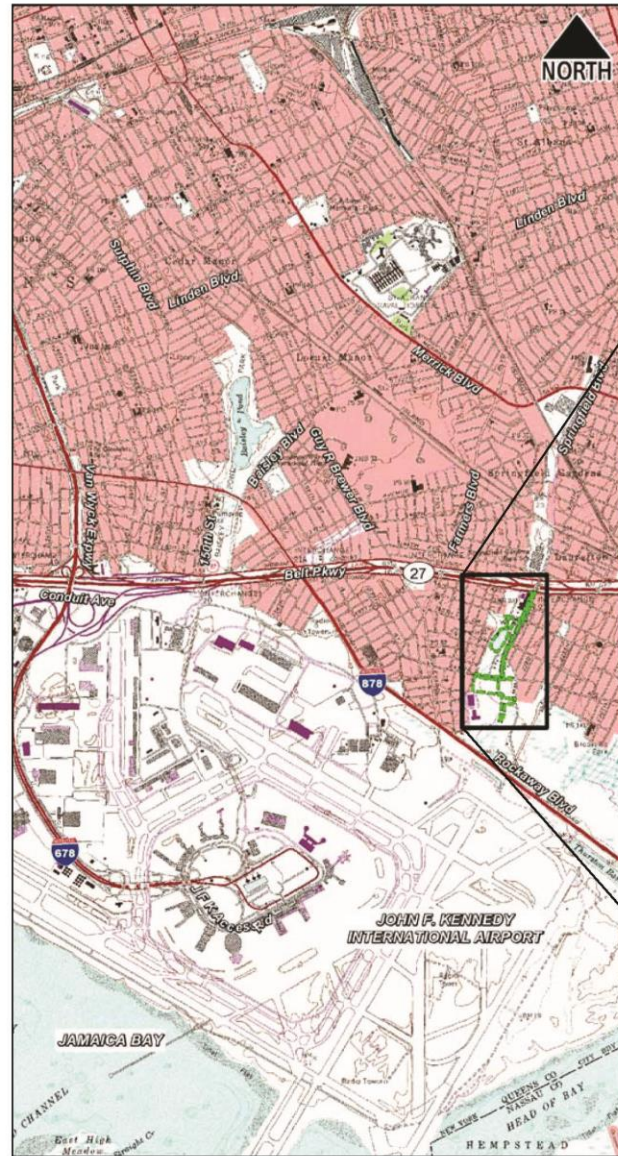
Source: My Green Montgomery, Montgomery County (Maryland)
Department of Environmental Protection





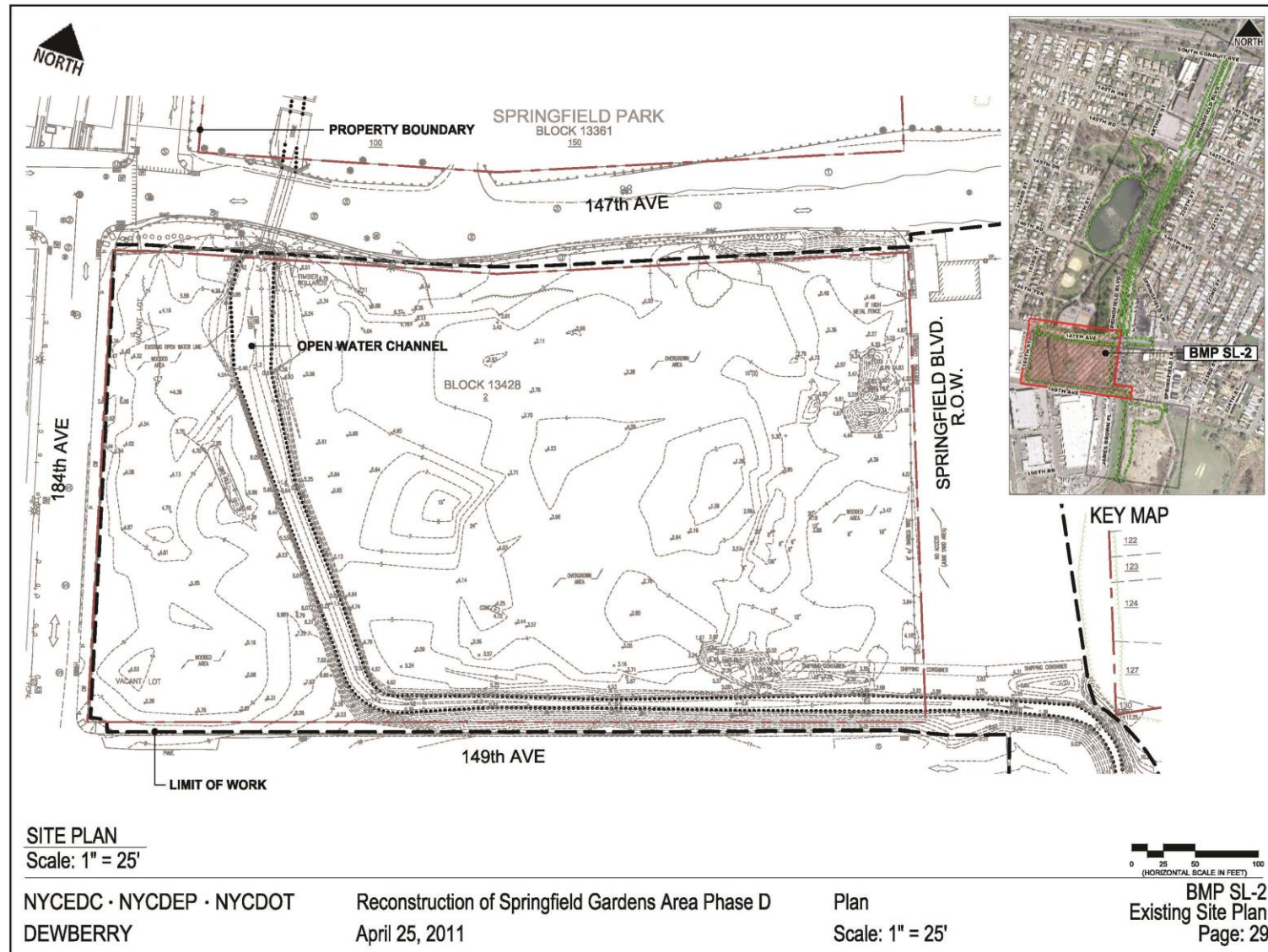






Neighborhood
Location







Source: Site Works

Antonio F. Federici, PWS

Senior Wetland Specialist

203.497.3777

afederici@dewberry.com